

Distributed By



PNEUFLEX PNEUMATIC CO., LTD

ADD: NO.727, Suntang North Road, Cixi, Ningbo,
China, 315300

TEL: +86 574 23619802 23619805

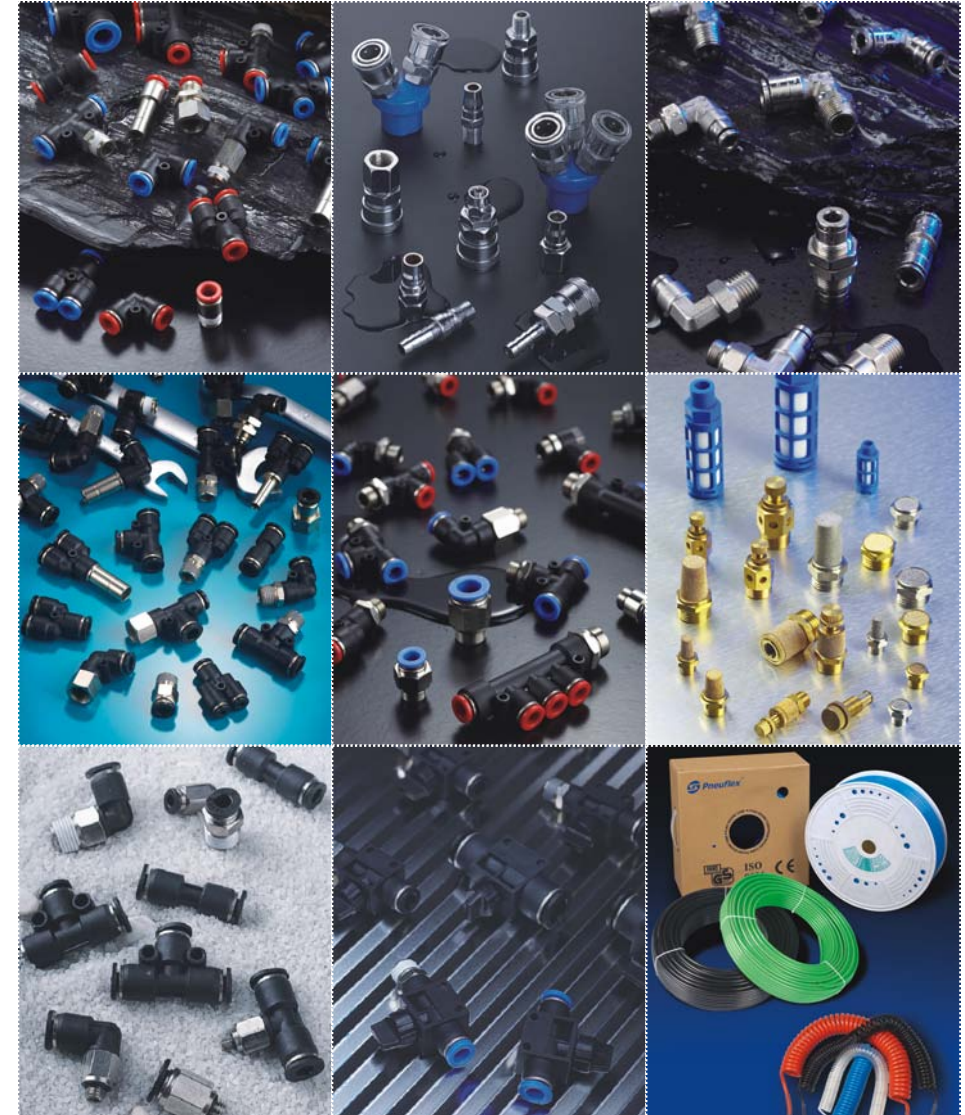
FAX: +86 574 56877834

www.pneuflexfittings.com www.wellfittings.com

TECHNICAL SUPPORT:

Tech@pneuflexfittings.com

Information Contained Herein May Be Changed Without Prior Notification.



PNEUFLEX PNEUMATIC CO., LTD

Products throughout more than 30 countries and regions.

2011 EDITION

Introduction

Pneuflex Pneumatic Co., Ltd was established in 2001. Pneuflex has become the leading manufacturer of pneumatic fittings and tubing in China.

Pneuflex principle is to be a "Reliable Manufacturer and Responsible for Customers", which has already approved by customers and distributors from more than 30 countries and regions.

Certified by ISO9001:2000, Pneuflex preserves advanced technology and high quality to serve customers from all over the world. With a team of experienced and well-trained staff, Pneuflex could ensure the quality of every pneumatic fittings and air tubing.

Pneuflex is expecting to working with you in future. Welcome to pay a visit to our factory at any time.

Contents

02_	Cautions in Application of Tube Joint
05_	Metric Size-R(PT,BSPT)Thread Fittings
45_	Metric Size-G(BSPP)Thread Fittings
61_	Inch Size-NPT Thread Fittings
97_	Compact One Touch Fittings
105_	Brass Push in Fittings
113_	Speed Controllers
121_	Hand Valves
129_	Silencers
139_	Quick Couplers
145_	Tube\Tube Cutter\Air Blow Guns

Cautions in Application of Tube Joint

Before use, it should make clear following points

Warning

- 1、 Except air and water (only special type and custom-design), never attempt to use the tube joint other fluids.
- 2、 The tube joint application is prohibited where spark and fire might be occurred.
- 3、 The tube joint application is prohibited if water temperature is above 60°C because resin might be decomposed and damaged in water under a high temperature.
- 4、 The tube joint is not designed for application where there is static charge.
- 5、 Never apply tube joint with additional external load (bending, twist or pulling), otherwise damage or leakage will be occurred.

Caution

- 1、 If you use other supplier tubing, the different tubing tolerance might cause leakage or incorrect connection and disassembly. It must check if tubing OD is in compliance with the specification as listed in following table.

Size	Polyurethane Tube	Nylon Tube
Φ4mm	± 0.10	± 0.08
Φ6mm	± 0.12	± 0.10
Φ8mm	± 0.12	± 0.10
Φ10mm	± 0.15	± 0.12
Φ12mm	± 0.15	± 0.12
Φ16mm	± 0.15	± 0.16

- 2、 Always check the end of tubing for a right angle cutting and check the external surface of tubing for any damage or scratch. Please refer to following instruction in connection of tubing. When you insert the air tubing into the joint, you will have two-step feeling. Section One is locking claw while Section Two is sealing ring. You must insert the tube into Section Two.
Sleeve is used in tubing connection and disconnection. The sleeve is designed as an oval shape, which is convenient in assembly and disassembly. However, round sleeve is available to meet any customer special demand if the customer product has limited space for oval sleeve. After connection of tube joint and tubing, always try to pull tubing and ensure its firm connection.

The minimum insertion length of tubing is as listed, however, the tubing length tolerance as listed is necessary in practice.

Tube Size	Φ4	Φ6	Φ8	Φ10	Φ12	Φ16	
Sleeve Size	Metal	14.6	15.2	16.2	18.7	21.7	24.5
	Plastic	15.1	16	18.1	20.4	23.2	24.2

- 3、 Cautions during disassembly of tubing Before disconnection of tubing, always check tubing internal pressure for zero.
For disconnection of tubing, always press sleeve heavily and then pull out tubing. If sleeve is not pressed with enough force, it is hard to pull out tubing and external surface scratch might be resulted by locking claw, which is the cause of air leakage.
Don't swing or rotate tubing in disconnection otherwise groove might be resulted on the tubing surface by locking claw to prevent tubing from pulling.
- 4、 Always use proper tool to tighten external hexagonal and internal hexagonal parts of the tube joint. Always apply recommended torque on screws otherwise extra torque might damage thread and cause air leakage while insufficient torque might cause loose screws and air leakage.
After screws are tightened, you may adjust the direction of tubing with most of our tube joint. If it is hard in adjustment, you may apply recommended torque to turn screw to adjust direction of tubing.

Recommended Torque for Different Thread Specification

Thread Type	Thread Specification	Torque(kgf.cm)
Metric thread	M3	7
	M5	15-19
	M6	20-27
R/Rc thread	R/Rc1/8	70-90
	R/Rc1/4	120-140
	R/Rc3/8	220-240
	R/Rc1/2	280-300
UNF(Unified)	NO.10-32 UNF	15-19
NPT thread	1/16	70-90
	1/8	70-90
	1/4	120-140
	3/8	220-240
	1/2	280-300

Metric Size-R(PT,BSPT)Thread Fittings



Characteristics

1. Quick installation, simple and flexible, space-saving.
2. The tube fitting comes in a wide variety of models to meet all your needs in pneumatic piping.
3. Even after installation, the direction of tubing can be changed freely.
4. The release ring adopts the ellipse design to make it more convenient and Labor-saving for disconnection.
5. All taper threads are pre-coated with teflon with fine seal performance.
6. PC type fittings are equipped with the internal hexagonal holes. It is easy for them to be mounted in the narrow places.

Specification

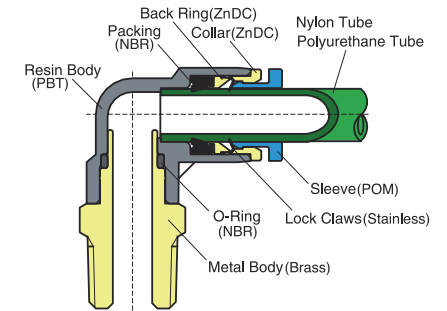
Fluid	Air, Vacuum	
Pressure Range	0~1.0MPa	0~150PSI
Negative Pressure	-100KPa(-750Torr)	-29.5In Hg
Max Pressure	1.5MPa	250PSI
Temperature Range	0~60°C	32~140°F
Applicable Tube	PU (Polyurethane)	PA(Nylon)

Product Code System

Structure Chart

PC 08 - 01

- ① ② ③



① Type

② Tube Outer Diameter

Metric Size						
Code	04	06	08	10	12	16
Tube Outer Diameter mm	Φ4	Φ6	Φ8	Φ10	Φ12	Φ16

③ Thread Type and Size

55° R(PT,BSPT)-Taper Pipe Thread					
Code	01	02	03	04	06
Thread	R1/8	R1/4	R3/8	R1/2	R3/4

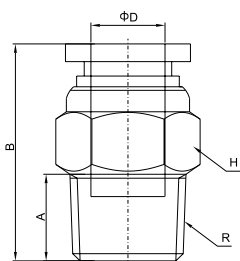
Metric Size				
Code	M5	M6	M8	M10
Thread	M5x0.8	M6x1	M8x1	M10x1
M12	M12A	M14	M16	M20
M12x1.25	M12Ax1.5	M14x1.5	M16x1.5	M20x1.5

Metric Size-R(PT,BSPT)Thread Fittings

Metric Size-R(PT,BSPT)Thread Fittings

PC

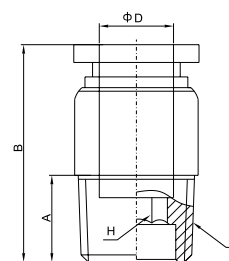
Male Straight



Model	ΦD	R	A	B	H
PC 04-M5	4	M5	4	19	10
PC 04-M6		M6	4.1	19	10
PC 04-01		R1/8	7	19	10
PC 04-02		R1/4	9.5	19	14
PC 06-M5	6	M5	4	20.5	12
PC 06-M6		M6	4.1	20.5	12
PC 06-01		R1/8	7	20	12
PC 06-02		R1/4	9.5	21	14
PC 06-03	R3/8	10	21	17	
PC 06-04	R1/2	13	24	21	
PC 08-01	8	R1/8	7	24.5	14
PC 08-02		R1/4	9.5	24.5	14
PC 08-03		R3/8	10	22	17
PC 08-04		R1/2	13	25	21
PC 10-01	10	R1/8	7	29	17
PC 10-02		R1/4	9.5	31	17
PC 10-03		R3/8	10	28.5	17
PC 10-04		R1/2	13	26	21
PC 12-01	12	R1/8	7	30.5	20
PC 12-02		R1/4	9.5	32.5	20
PC 12-03		R3/8	10	29	20
PC 12-04		R1/2	13	27.5	21
PC 16-02	16	R1/4	9.5	33.5	24
PC 16-03		R3/8	10	34	24
PC 16-04		R1/2	13	35	24

POC

Hex. Holed Straight



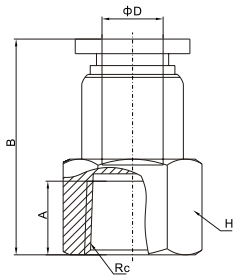
Model	ΦD	R	A	B	H
POC04-M5	4	M5	4	19	2
POC04-M6		M6	4.1	19	2
POC04-01		R1/8	7	19	3
POC04-02		R1/4	9.5	19	3
POC06-M5	6	M5	4	20.5	2
POC06-M6		M6	4.1	20.5	2
POC06-01		R1/8	7	20	4
POC06-02		R1/4	9.5	21	4
POC06-03	R3/8	10	21	4	
POC06-04	R1/2	13	24	4	
POC08-01	8	R1/8	7	24.5	5
POC08-02		R1/4	9.5	24.5	5
POC08-03		R3/8	10	22	6
POC08-04		R1/2	13	25	6
POC10-01	10	R1/8	7	29	5
POC10-02		R1/4	9.5	31	6
POC10-03		R3/8	10	28.5	8
POC10-04		R1/2	13	26	8
POC12-01	12	R1/8	7	30.5	5
POC12-02		R1/4	9.5	32.5	6
POC12-03		R3/8	10	29	8
POC12-04		R1/2	13	27.5	8
POC16-02	16	R1/4	9.5	33.5	6
POC16-03		R3/8	10	34	8
POC16-04		R1/2	13	35	10

Metric Size-R(PT,BSPT)Thread Fittings

Metric Size-R(PT,BSPT)Thread Fittings

PCF

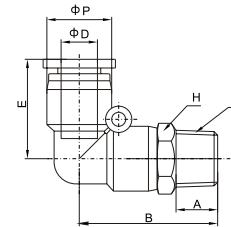
Female Straight



Model	ΦD	Rc	A	B	H
PCF04-M5	4	M5	7.0	22	12
PCF04-M6		M6	7.1	22	12
PCF04-01		RC1/8	8	23	12
PCF04-02		RC1/4	11	26	17
PCF06-M5	6	M5	7.0	23.5	12
PCF06-M6		M6	7.1	23.5	12
PCF06-01		RC1/8	8	24.5	12
PCF06-02		RC1/4	11	27.5	17
PCF06-03		RC3/8	12	28.5	21
PCF06-04		RC1/2	14	30.5	24
PCF08-01	8	RC1/8	8	26.5	14
PCF08-02		RC1/4	11	29.5	17
PCF08-03		RC3/8	12	30.5	21
PCF08-04		RC1/2	14	32.5	24
PCF10-01	10	RC1/8	8	30.5	17
PCF10-02		RC1/4	11	33.5	17
PCF10-03		RC3/8	12	34.5	21
PCF10-04		RC1/2	14	36.5	24
PCF12-02	12	RC1/4	11	34	21
PCF12-03		RC3/8	12	35	21
PCF12-04		RC1/2	14	37	24

PL

Male Elbow



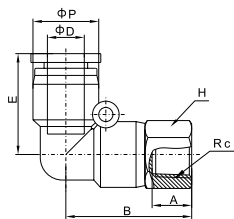
Model	ΦD	E	B	ΦP	A	R	H
PL04-M5	4	18	22.2	11	4	M5	10
PL04-M6		18	22.2	11	4.1	M6	10
PL04-01		18	24.8	11	7	R1/8	10
PL04-02		18	28.8	11	9.5	R1/4	14
PL06-M5	6	19	22.5	13.4	4	M5	12
PL06-M6		19	22.5	13.4	4.1	M6	12
PL06-01		19	25.2	13.4	7	R1/8	12
PL06-02		19	28.2	13.4	9.5	R1/4	14
PL06-03		19	29.2	13.4	10	R3/8	17
PL06-04		19	33.7	13.4	13	R1/2	21
PL08-01	8	23	28.5	15	7	R1/8	14
PL08-02		23	32	15	9.5	R1/4	14
PL08-03		23	33	15	10	R3/8	17
PL08-04		23	36	15	13	R1/2	21
PL10-01	10	27.5	33.3	18.8	7	R1/8	17
PL10-02		27.5	36.3	18.8	9.5	R1/4	17
PL10-03		27.5	36.8	18.8	10	R3/8	17
PL10-04		27.5	40.5	18.8	13	R1/2	21
PL12-01	12	29.5	36.5	21	7	R1/8	19
PL12-02		29.5	38.5	21	9.5	R1/4	19
PL12-03		29.5	39	21	10	R3/8	19
PL12-04		29.5	44	21	13	R1/2	21
PL16-02	16	31.5	41	26	9.5	R1/4	24
PL16-03		31.5	42	26	10	R3/8	24
PL16-04		31.5	45	26	13	R1/2	24

Metric Size-R(PT,BSPT)Thread Fittings

Metric Size-R(PT,BSPT)Thread Fittings

PLF

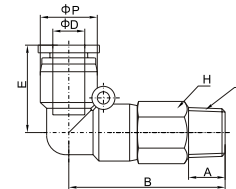
Female Elbow



Model	ΦD	E	B	ΦP	A	R	H	
PLF04-M5	4	18	21.2	11	4	M5	10	
PLF04-M6		18	21.2	11	4.1	M6	10	
PLF04-01		18	23.5	11	7	RC1/8	14	
PLF04-02		18	26.5	11	9.5	RC1/4	17	
PLF06-M5	6	19	21.8	13.4	4	M5	12	
PLF06-M6		19	21.8	13.4	4.1	M6	12	
PLF06-01		19	24.2	13.4	7	RC1/8	12	
PLF06-02		19	27.2	13.4	9.5	RC1/4	17	
PLF06-03	6	19	28.8	13.4	10	RC3/8	21	
PLF06-04		19	30.8	13.4	13	RC1/2	24	
PLF08-01		8	23	27.5	15	7	RC1/8	14
PLF08-02			23	31	15	9.5	RC1/4	17
PLF08-03	23		32	15	10	RC3/8	21	
PLF08-04	23		34	15	13	RC1/2	24	
PLF10-01	10	27.5	31.8	18.8	7	RC1/8	17	
PLF10-02		27.5	35	18.8	9.5	RC1/4	17	
PLF10-03		27.5	36	18.8	10	RC3/8	21	
PLF10-04		27.5	38	18.8	13	RC1/2	24	
PLF12-01	12	29.5	33.5	21	7	RC1/8	21	
PLF12-02		29.5	37	21	9.5	RC1/4	21	
PLF12-03		29.5	38	21	10	RC3/8	21	
PLF12-04		29.5	40	21	13	RC1/2	24	

PLL

Extended Male Elbow



Model	ΦD	E	B	ΦP	A	R	H	
PLL04-M5	4	18	32	11	4	M5	10	
PLL04-M6		18	32	11	4.1	M6	10	
PLL04-01		18	34	11	7	R1/8	10	
PLL04-02		18	37	11	9.5	R1/4	14	
PLL06-M5	6	19	34.5	13.4	4	M5	12	
PLL06-M6		19	34.5	13.4	4.1	M6	12	
PLL06-01		19	37.5	13.4	7	R1/8	12	
PLL06-02		19	40	13.4	9.5	R1/4	14	
PLL06-03	6	19	41.5	13.4	10	R3/8	17	
PLL06-04		19	45	13.4	13	R1/2	21	
PLL08-01		8	23	42.5	15	7	R1/8	14
PLL08-02			23	44.5	15	9.5	R1/4	14
PLL08-03	23		46.5	15	10	R3/8	17	
PLL08-04	23		50	15	13	R1/2	21	
PLL10-01	10	27.5	52	18.8	7	R1/8	17	
PLL10-02		27.5	54	18.8	9.5	R1/4	17	
PLL10-03		27.5	55	18.8	10	R3/8	17	
PLL10-04		27.5	58.5	18.8	13	R1/2	21	
PLL12-01	12	29.5	59	21	7	R1/8	19	
PLL12-02		29.5	59.5	21	9.5	R1/4	19	
PLL12-03		29.5	60.5	21	10	R3/8	19	
PLL12-04		29.5	64	21	13	R1/2	21	
PLL16-02	16	31.5	72	26	9.5	R1/4	24	
PLL16-03		31.5	74	26	10	R3/8	24	
PLL16-04		31.5	78	26	13	R1/2	24	

Metric Size-R(PT,BSPT)Thread Fittings

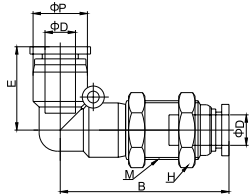
Metric Size-R(PT,BSPT)Thread Fittings

PLM

Bulkhead Elbow



Model	ΦD	E	B	ΦP	A	M	H
PLM04	4	18	43.6	11	7	M12	14
PLM06	6	19	46.5	13.4	9.5	M14	17
PLM08	8	23	53.5	15	4	M16	20
PLM10	10	27.5	63.8	18.8	7	M20	24
PLM12	12	29.5	69.2	21	9.5	M22	27
PLM16	16	31.5	76	26	10	M24	30

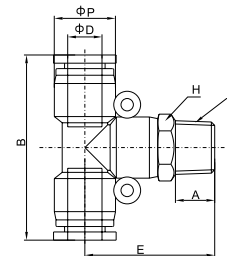


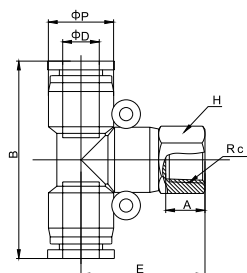
PB

Male Branch Tee

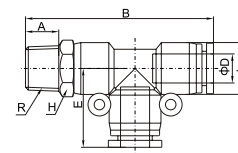


Model	ΦD	E	B	ΦP	A	R	H
PB04-M5	4	22	36.5	11	4	M5	10
PB04-M6		22	36.5	11	4.1	M6	10
PB04-01		24.5	36.5	11	7	R1/8	10
PB04-02		27.5	36.5	11	9.5	R1/4	14
PB06-M5	6	23	38.5	13.4	4	M5	12
PB06-M6		23	38.5	13.4	4.1	M6	12
PB06-01		25.5	38.5	13.4	7	R1/8	12
PB06-02		28.5	38.5	13.4	9.5	R1/4	14
PB06-03		29.5	38.5	13.4	10	R3/8	17
PB06-04		34	38.5	13.4	13	R1/2	21
PB08-01	8	28.5	45.5	15	7	R1/8	14
PB08-02		32	45.5	15	9.5	R1/4	14
PB08-03		33	45.5	15	10	R3/8	17
PB08-04		36	45.5	15	13	R1/2	21
PB10-01	10	34	56	18.8	7	R1/8	17
PB10-02		37	56	18.8	9.5	R1/4	17
PB10-03		37.5	56	18.8	10	R3/8	17
PB10-04		41.5	56	18.8	13	R1/2	21
PB12-01	12	36.5	59	21	7	R1/8	21
PB12-02		38.5	59	21	9.5	R1/4	21
PB12-03		39	59	21	10	R3/8	21
PB12-04		42	59	21	13	R1/2	21
PB16-02	16	40.5	63	26	9.5	R1/4	24
PB16-03		41	63	26	10	R3/8	24
PB16-04		44	63	26	13	R1/2	24



Metric Size-R(PT,BSPT)Thread Fittings
Metric Size-R(PT,BSPT)Thread Fittings
PBF
Female Branch Tee


Model	ΦD	E	B	ΦP	A	R	H
PBF04-M5	4	21.2	36.5	11	4.5	M5	10
PBF04-M6		21.2	36.5	11	4.6	M6	10
PBF04-01		23.5	36.5	11	7	R1/8	10
PBF04-02		26.5	36.5	11	10	R1/4	14
PBF06-M5	6	21.8	38.5	13.4	4.5	M5	12
PBF06-M6		21.8	38.5	13.4	4.6	M6	12
PBF06-01		24.2	38.5	13.4	7	R1/8	12
PBF06-02		27.2	38.5	13.4	10	R1/4	14
PBF06-03	8	28.8	38.5	13.4	11	R3/8	17
PBF06-04		30.8	38.5	13.4	13	R1/2	21
PBF08-01		27.5	45.5	15	7	R1/8	14
PBF08-02		31	45.5	15	10	R1/4	14
PBF08-03	10	32	45.5	15	11	R3/8	17
PBF08-04		34	45.5	15	13	R1/2	21
PBF10-01		31.8	56	18.8	7	R1/8	17
PBF10-02		35	56	18.8	10	R1/4	17
PBF10-03	12	36	56	18.8	11	R3/8	17
PBF10-04		38	56	18.8	13	R1/2	21
PBF12-01		33.5	59	21	7	R1/8	21
PBF12-02		37	59	21	10	R1/4	21
PBF12-03	16	38	59	21	11	R3/8	21
PBF12-04		40	59	21	13	R1/2	21
PBF16-02		40.5	63	26	10	R1/4	24
PBF16-03		41	63	26	11	R3/8	24
PBF16-04	44	63	26	13	R1/2	24	

PD
Male Run Tee


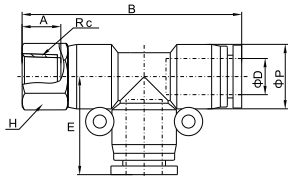
Model	ΦD	E	B	ΦP	A	R	H
PD04-M5	4	18	40.5	11	4	M5	10
PD04-M6		18	40.5	11	4.1	M6	10
PD04-01		18	43	11	7	R1/8	10
PD04-02		18	46	11	9.5	R1/4	14
PD06-M5	6	19	42	13.4	4	M5	12
PD06-M6		19	42	13.4	4.1	M6	12
PD06-01		19	45	13.4	7	R1/8	12
PD06-02		19	47.5	13.4	9.5	R1/4	14
PD06-03	8	19	48.5	13.4	10	R3/8	17
PD06-04		19	53	13.4	13	R1/2	21
PD08-01		23	51.5	15	7	R1/8	14
PD08-02		23	55	15	9.5	R1/4	14
PD08-03	10	23	56	15	10	R3/8	17
PD08-04		23	59	15	13	R1/2	21
PD10-01		28	62	18.8	7	R1/8	17
PD10-02		28	65	18.8	9.5	R1/4	17
PD10-03	12	28	66.5	18.8	10	R3/8	17
PD10-04		28	69.5	18.8	13	R1/2	21
PD12-01		29.5	66	21	7	R1/8	21
PD12-02		29.5	68	21	9.5	R1/4	21
PD12-03	16	29.5	68.5	21	10	R3/8	21
PD12-04		29.5	71.5	21	13	R1/2	21
PD16-02		31	72.5	26	9.5	R1/4	24
PD16-03		31	73	26	10	R3/8	24
PD16-04	31	76	26	13	R1/2	24	

Metric Size-R(PT,BSPT)Thread Fittings

Metric Size-R(PT,BSPT)Thread Fittings

PDF

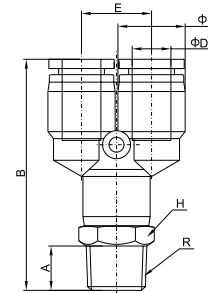
Female Run Tee



Model	ΦD	E	B	ΦP	A	R	H
PDF04-M5	4	18	40.5	11	4	M5	10
PDF04-01		18	43	11	7	R1/8	10
PDF04-02		18	46	11	9.5	R1/4	14
PDF06-M5	6	19	42	13.4	4	M5	12
PDF06-01		19	45	13.4	7	R1/8	12
PDF06-02		19	47.5	13.4	9.5	R1/4	14
PDF06-03		19	48.5	13.4	10	R3/8	17
PDF06-04	19	53	13.4	13	R1/2	21	
PDF08-01	8	23	51.5	15	7	R1/8	14
PDF08-02		23	55	15	9.5	R1/4	14
PDF08-03		23	56	15	10	R3/8	17
PDF08-04		23	59	15	13	R1/2	21
PDF10-01	10	28	62	18.8	7	R1/8	17
PDF10-02		28	65	18.8	9.5	R1/4	17
PDF10-03		28	66.5	18.8	10	R3/8	17
PDF10-04		28	69.5	18.8	13	R1/2	21
PDF12-01	12	29.5	66	21	7	R1/8	21
PDF12-02		29.5	68	21	9.5	R1/4	21
PDF12-03		29.5	68.5	21	10	R3/8	21
PDF12-04		29.5	71.5	21	13	R1/2	21
PDF16-02	16	31	72.5	26	9.5	R1/4	24
PDF16-03		31	73	26	10	R3/8	24
PDF16-04		31	76	26	13	R1/2	24

PX

Male Y



Model	ΦD	E	B	ΦP	A	R	H
PX04-M5	4	11	39.5	11	4	M5	10
PX04-M6		11	39.5	11	4.1	M6	10
PX04-01		11	42	11	7	R1/8	10
PX04-02	1	45	1	9.5	R1/4	14	
PX06-M5	6	13.4	40.5	13.4	4	M5	12
PX06-M6		13.4	40.5	13.4	4.1	M6	12
PX06-01		13.4	43.5	13.4	7	R1/8	12
PX06-02		13.4	46.5	13.4	9.5	R1/4	14
PX06-03	13.4	47.5	13.4	10	R3/8	17	
PX06-04	13.4	51.5	13.4	13	R1/2	21	
PX08-01	8	15	46	15	7	R1/8	14
PX08-02		15	49.5	15	9.5	R1/4	14
PX08-03		15	51	15	10	R3/8	17
PX08-04		15	54	15	13	R1/2	21
PX10-01	10	18.8	60	18.8	7	R1/8	17
PX10-02		18.8	63	18.8	9.5	R1/4	17
PX10-03		18.8	64	18.8	10	R3/8	17
PX10-04		18.8	66.5	18.8	13	R1/2	21
PX12-01	12	21	65	21	7	R1/8	19
PX12-02		21	70	21	9.5	R1/4	19
PX12-03		21	70.5	21	10	R3/8	19
PX12-04		21	73	21	13	R1/2	21

Metric Size-R(PT,BSPT)Thread Fittings

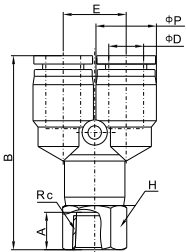
Metric Size-R(PT,BSPT)Thread Fittings

PXF



Female Y

Model	ΦD	E	B	ΦP	A	R	H	
PXF04-M5	4	11	39.5	11	4	M5	10	
PXF04-M6		11	39.5	11	4.1	M6	10	
PXF04-01		11	42	11	7	R1/8	10	
PXF04-02		11	45	11	9.5	R1/4	14	
PXF06-M5	6	13.4	40.5	13.4	4	M5	12	
PXF06-M6		13.4	40.5	13.4	4.1	M6	12	
PXF06-01		13.4	43.5	13.4	7	R1/8	12	
PXF06-02		13.4	46.5	13.4	9.5	R1/4	14	
PXF06-03		13.4	47.5	13.4	10	R3/8	17	
PXF06-04		13.4	51.5	13.4	13	R1/2	21	
PXF08-01		8	15	46	15	7	R1/8	14
PXF08-02			15	49.5	15	9.5	R1/4	14
PXF08-03	15		51	15	10	R3/8	17	
PXF08-04	15		54	15	13	R1/2	21	
PXF10-01	10	18.8	60	18.8	7	R1/8	17	
PXF10-02		18.8	63	18.8	9.5	R1/4	17	
PXF10-03		18.8	64	18.8	10	R3/8	17	
PXF10-04		18.8	66.5	18.8	13	R1/2	21	
PXF12-01	12	21	65	21	7	R1/8	19	
PXF12-02		21	70	21	9.5	R1/4	19	
PXF12-03		21	70.5	21	10	R3/8	19	
PXF12-04		21	73	21	13	R1/2	21	

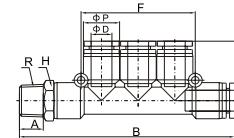


PKB



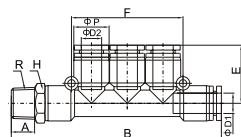
Male Branch Triple

Model	ΦD	B	E	A	R	F	ΦP	H
PKB04-01	4	63.1	19	7	R1/8	35.8	13.4	12
PKB04-02		66.5	19	9.5	R1/4	35.8	13.4	14
PKB06-01	6	70.5	20.2	7	R1/8	42.8	15	14
PKB06-02		74	20.2	9.5	R1/4	42.8	15	14
PKB06-03		75	20.2	10	R3/8	42.8	15	17
PKB08-01	8	86.5	23.8	7	R1/8	49.6	18.8	14
PKB08-02		89.5	23.8	9.5	R1/4	49.6	18.8	14
PKB08-03		90.5	23.8	10	R3/8	49.6	18.8	17
PKB10-02	10	104	29	9.5	R1/4	59.6	21	17
PKB10-03		105.5	29	10	R3/8	59.6	21	17
PKB10-04		110	29	13	R1/2	59.6	21	21



PKD

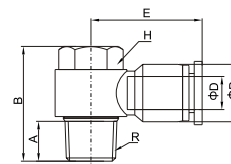
Male Reduced Branch Triple



Model	ΦD1	ΦD2	B	E	A	R	F	ΦP	H
PKD06-04-01	6	4	63.1	19	7	R1/8	35.8	13.4	12
PKD06-04-02			66.5	19	9.5	R1/4	35.8	13.4	14
PKD08-06-01	8	6	70.5	20.2	7	R1/8	42.8	15	14
PKD08-06-02			74	20.2	9.5	R1/4	42.8	15	14
PKD08-06-03			75	20.2	10	R3/8	42.8	15	17
PKD10-08-01	10	8	86.5	23.8	7	R1/8	49.6	18.8	14
PKD10-08-02			89.5	23.8	9.5	R1/4	49.6	18.8	14
PKD10-08-03			90.5	23.8	10	R3/8	49.6	18.8	17
PKD12-10-02	12	10	104	29	9.5	R1/4	59.6	21	17
PKD12-10-03			105.5	29	10	R3/8	59.6	21	17
PKD12-10-04			110	29	13	R1/2	59.6	21	21

PH

Male Banjo



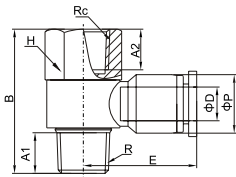
Model	ΦD	E	B	ΦP	A	R	H
PH04-M5	4	20	17	11	4	M5	8
PH04-M6		20	17	11	4.1	M6	8
PH04-01		22.5	26	11	7	R1/8	12
PH04-02		24	23.5	11	9.5	R1/4	14
PH06-M5	6	22	17	13.4	4	M5	8
PH06-M6		22	17	13.4	4.1	M6	8
PH06-01		23	23.5	13.4	7	R1/8	12
PH06-02		25	26	13.4	9.5	R1/4	14
PH06-03	27	31.5	13.4	10	R3/8	19	
PH08-01	8	25.5	23.5	15	7	R1/8	12
PH08-02		28.5	26	15	9.5	R1/4	14
PH08-03		29.5	31.5	15	10	R3/8	19
PH08-04		32.5	38.5	15	13	R1/2	24
PH10-01	10	30	23.5	18.8	7	R1/8	12
PH10-02		32	26	18.8	9.5	R1/4	14
PH10-03		33	31.5	18.8	10	R3/8	19
PH10-04		36	38.5	18.8	13	R1/2	24
PH12-02	12	34	26	21	9.5	R1/4	14
PH12-03		35.5	31.5	21	10	R3/8	19
PH12-04		36.5	38.5	21	13	R1/2	24

Metric Size-R(PT,BSPT)Thread Fittings

Metric Size-R(PT,BSPT)Thread Fittings

PHF

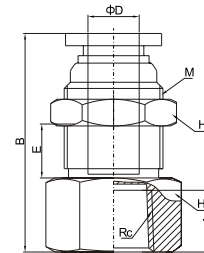
Female Banjo



Model	ΦD	E	B	ΦP	A1	A2	Rc	R	H
PHF04-M5	4	20	19.5	11	4	5	M5	M5	8
PHF04-M6		20	19.5	11	4.1	5	M6	M6	8
PHF04-01		22.5	29.5	11	7	8	RC1/8	R1/8	12
PHF04-02	6	24	34.5	11	9.5	10	RC1/4	R1/4	17
PHF06-M5		22	19.5	13.4	4	5	M5	M5	8
PHF06-M6		22	19.5	13.4	4.1	5	M6	M6	8
PHF06-01	8	23	29.5	13.4	7	8	RC1/8	R1/8	12
PHF06-02		25	34.5	13.4	9.5	10	RC1/4	R1/4	17
PHF06-03		27	40.5	13.4	10	11	RC3/8	R3/8	21
PHF08-01	10	25.5	29.5	15	7	8	RC1/8	R1/8	12
PHF08-02		28.5	34.5	15	9.5	10	RC1/4	R1/4	17
PHF08-03		29.5	40.5	15	10	11	RC3/8	R3/8	21
PHF08-04	12	32.5	47.5	15	13	14	RC1/2	R1/2	24
PHF10-01		30	34.5	18.8	7	8	RC1/8	R1/8	12
PHF10-02		32	34.5	18.8	9.5	10	RC1/4	R1/4	17
PHF10-03	14	33	40.5	18.8	10	11	RC3/8	R3/8	21
PHF10-04		36	47.5	18.8	13	14	RC1/2	R1/2	24
PHF12-02		34	34.5	21	9.5	10	RC1/4	R1/4	17
PHF12-03	16	35.5	40.5	21	10	11	RC3/8	R3/8	21
PHF12-04		36.5	47.5	21	13	14	RC1/2	R1/2	24

PMF

Bulkhead Female Straight



Model	ΦD	Rc	A	B	M	E	H1	H2
PMF04-01	4	RC1/8	8	23	M12	5	14	14
PMF04-02		RC1/4	11	26	M12	5	17	14
PMF06-01	6	RC1/8	8	24.5	M12	7	17	17
PMF06-02		RC1/4	11	27.5	M14	7	17	17
PMF06-03	8	RC3/8	12	28.5	M14	7	19	17
PMF08-01		RC1/8	8	26.5	M16	8	19	19
PMF08-02	10	RC1/4	11	29.5	M16	8	19	19
PMF08-03		RC3/8	12	30.5	M16	8	19	19
PMF08-04		RC1/2	14	32.5	M16	8	24	19
PMF10-01	12	RC1/8	8	30.5	M20	8.5	22	24
PMF10-02		RC1/4	11	33.5	M20	8.5	24	24
PMF10-03		RC3/8	12	34.5	M20	8.5	24	24
PMF10-04		RC1/2	14	36.5	M20	8.5	24	24
PMF12-01	14	RC1/8	8	34	M22	9	24	26
PMF12-02		RC1/4	11	34	M22	9	24	26
PMF12-03		RC3/8	12	35	M22	9	24	26
PMF12-04		RC1/2	14	37	M22	9	24	26

Metric Size-R(PT,BSPT)Thread Fittings

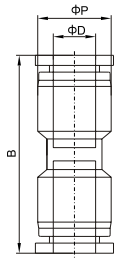
Metric Size-R(PT,BSPT)Thread Fittings

PU

Union Straight



Model	ΦD	B	ΦP
PU04	4	32.5	11
PU06	6	35	13.4
PU08	8	39	15
PU10	10	47	18.8
PU12	12	48.5	21
PU16	16	56	26

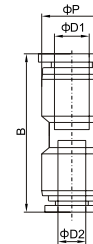


PG

Union Straight Reducer



Model	$\Phi D1$	$\Phi D2$	B	ΦP
PG06-04	6	4	35	13.4
PG08-04	8	4	38.5	15
PG08-06	8	6	38.5	15
PG10-06	10	6	46.5	18.8
PG10-08	10	8	46.5	18.8
PG12-06	12	6	48	21
PG12-08	12	8	48	21
PG12-10	12	10	48	21



Metric Size-R(PT,BSPT)Thread Fittings

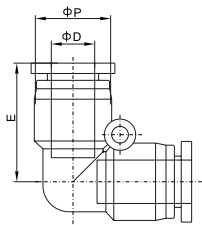
Metric Size-R(PT,BSPT)Thread Fittings

PV

Union Elbow



Model	ΦD	E	ΦP
PV04	4	18	11
PV06	6	19	13.4
PV08	8	23	15
PV10	10	27.5	18.8
PV12	12	29.5	21
PV16	16	31.5	26

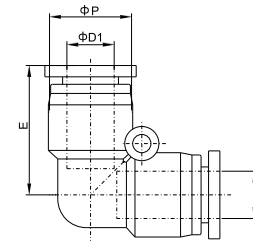


PVG

Union Elbow Reducer



Model	ΦD1	ΦD2	E	ΦP
PVG06-04	6	4	19	13.4
PVG08-04	8	4	23	15
PVG08-06	8	6	23	15
PVG10-06	10	6	27.5	18.8
PVG10-08	10	8	27.5	18.8
PVG12-08	12	8	29.5	21
PVG12-10	12	10	29.5	21



Metric Size-R(PT,BSPT)Thread Fittings

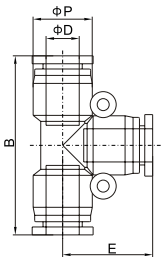
Metric Size-R(PT,BSPT)Thread Fittings

PE

Union Tee



Model	ΦD	B	ΦP	E
PE04	4	36.5	11	18
PE06	6	38.5	13.4	19
PE08	8	45.5	15	23
PE10	10	56	18.8	28
PE12	12	58.5	21	39.5
PE16	16	63	26	31

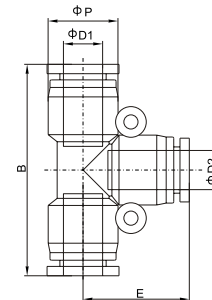


PEG

Union Tee Reducer



Model	ΦD1	ΦD2	B	ΦP	E
PEG06-04	6	4	38.5	13.4	19
PEG08-06	8	6	45.5	15	23
PEG10-08	10	8	56	18.8	28
PEG12-10	12	10	58.5	21	39.5



Metric Size-R(PT,BSPT)Thread Fittings

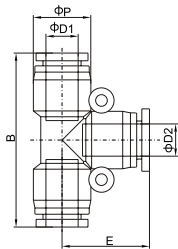
Metric Size-R(PT,BSPT)Thread Fittings

PGE

Union Tee Reducer



Model	ΦD1	ΦD2	B	ΦP	E
PGE06-04	4	6	38	13.4	19
PGE08-06	6	8	45	15	23
PGE10-08	8	10	55.5	18.8	28
PGE12-10	10	12	58	21	39.5

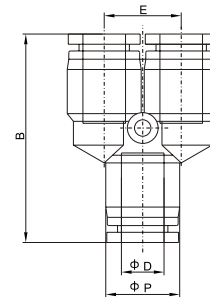


PY

Union Y



Model	ΦD	B	ΦP	E
PY04	4	35.5	11	11
PY06	6	37	13.4	13.4
PY08	8	40.5	15	15
PY10	10	49.5	18.8	18.8
PY12	12	52.5	21	21

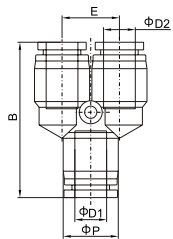


PW

Union Y Reducer



Model	ΦD1	ΦD2	B	ΦP	E
PW06-04	6	4	37	13.4	13.4
PW08-06	8	6	40.5	15	15
PW10-08	10	8	49.5	18.8	18.8
PW12-10	12	10	52.5	21	21

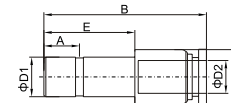


PGJ

Plug-in Reducer



Model	ΦD2	E	ΦD1	B	A	ΦP
PGJ06-04	4	17	6	41	6	10
PGJ08-04	4	20	8	44	6	10
PGJ08-06	6	20	8	45	6	12
PGJ10-06	6	23	10	47	8	12
PGJ10-08	8	23	10	47	8	14
PGJ12-08	8	23	12	54	8	14
PGJ12-10	10	23	12	54	8	17



Metric Size-R(PT,BSPT)Thread Fittings

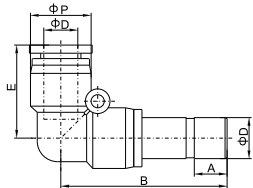
Metric Size-R(PT,BSPT)Thread Fittings

PLJ

Plug-in Elbow



Model	ΦD	E	B	ΦP
PLJ04	4	18	33	11
PLJ06	6	19	36.2	13.4
PLJ08	8	23	42.5	15
PLJ10	10	27.5	50.8	18.8
PLJ12	12	29.6	54.5	21
PLJ16	16	32.5	59.8	24

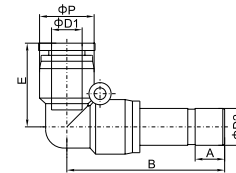


PLGJ

Plug-in Elbow Reducer



Model	ΦD1	E	B	ΦP	A	ΦD2
PLGJ06-04	4	18	32.3	11	6	6
PLGJ08-04	4	18	35.3	11	6	8
PLGJ08-06	6	19	37	13.4	6	8
PLGJ10-06	6	19	40	13.4	6	10
PLGJ10-08	8	23	43	15	8	10
PLGJ12-08	8	23	43	15	8	12
PLGJ12-10	10	27.5	47	18.8	8	12



Metric Size-R(PT,BSPT)Thread Fittings

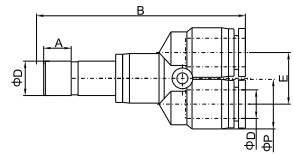
Metric Size-R(PT,BSPT)Thread Fittings

PYJ

Plug-in Y



Model	ΦD	E	B	ΦP
PYJ04	4	11	51	11
PYJ06	6	13.4	54.5	13.4
PYJ08	8	15	60.1	15
PYJ10	10	18.8	72.9	18.8
PYJ12	12	21	78.1	21

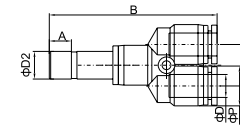


PWJ

Plug-in Y Reducer



Model	ΦD1	E	B	ΦP	A	ΦD2
PWJ06-04	4	11	50	11	6	6
PWJ08-04	4	11	53	11	6	8
PWJ08-06	6	13.4	54.5	13.4	6	8
PWJ10-06	6	13.4	57.5	13.4	6	10
PWJ10-08	8	15	61	15	8	10
PWJ12-08	8	15	61	15	8	12
PWJ12-10	10	18.8	69.5	18.8	8	12



Metric Size-R(PT,BSPT)Thread Fittings

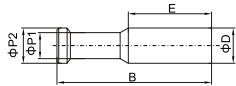
Metric Size-R(PT,BSPT)Thread Fittings

PP



Plug

Model	ΦD	E	ΦD2	B	ΦP
PP04	4	15	5	28	3
PP06	6	17	7	33	3
PP08	8	18	9	37	4
PP10	10	21	11	42	5
PP12	12	23	13	44	6

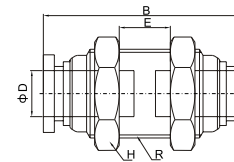


PM



Bulkhead Union

Model	ΦD	B	E	R	H
PM04	4	30	8	M12X1	14
PM06	6	33	10	M14X1	17
PM08	8	36.8	12	M16X1	19
PM10	10	44.5	15	M20X1	24
PM12	12	46	16	M22X1	27



Metric Size-R(PT,BSPT)Thread Fittings

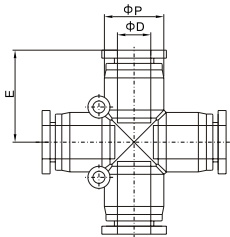
Metric Size-R(PT,BSPT)Thread Fittings

PZA

Union Cross



Model	ΦD	E	ΦP
PZA04	4	17.5	11
PZA06	6	19.2	13.4
PZA08	8	22.5	15
PZA10	10	28	18.8
PZA12	12	30	21

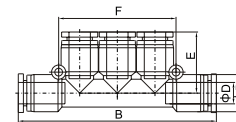


PK

Union Branch



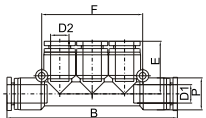
Model	ΦD	B	E	F	ΦP
PK04	4	57	19	35.8	13.4
PK06	6	64	20.2	42.8	15
PK08	8	80.6	23.8	49.6	18.8
PK10	10	96	29	59.6	21



Metric Size-R(PT,BSPT)Thread Fittings

PKG

Union Branch Reducer



Model	$\Phi D1$	B	E	$\Phi D2$	F	ΦP
PKG06-04	6	57.5	19	4	35.8	13.4
PKG08-06	8	65	20.2	6	42.8	15
PKG10-08	10	81	23.8	8	49.6	18.8
PKG12-10	12	97	29	10	59.6	21

Metric Size-G(BSPP)Thread Fittings

Characteristics

1. Quick installation, simple and flexible, space-saving.
2. The tube fitting comes in a wide variety of models to meet all your needs in pneumatic piping.
3. Even after installation, the direction of tubing can be changed freely.
4. The release ring adopts the ellipse design to make it more convenient and labor-saving for disconnection.
5. All threads are in O-ring with fine seal Performance.
6. PC type fittings are equipped with the internal hexagonal holes. It is easy for them to be mounted in the narrow places.

Specification

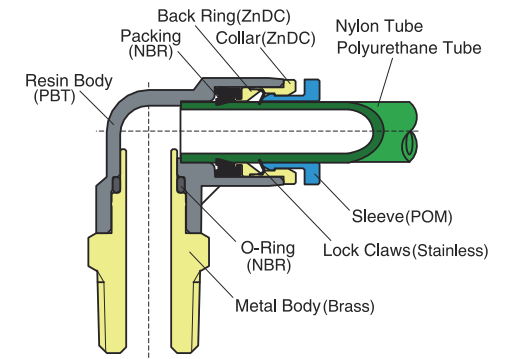
Fluid	Air, Vacuum	
Pressure Range	0~1.0MPa	0~150PSI
Negative Pressure	-100KPa(10Torr)	-29.5In Hg
Max Pressure	1.5MPa	250PSI
Temperature Range	0~60°C	32~140°F
Applicable Tube	PU (Polyurethane)	PA(Nylon)

Product Code System

PC 08 - G01

① ② ③

Structure Chart



① Type

② Tube Outer Diameter

	Metric Size					
Code	04	06	08	10	12	16
Tube Outer Diameter mm	Φ4	Φ6	Φ8	Φ10	Φ12	Φ16

③ Thread Type and Size

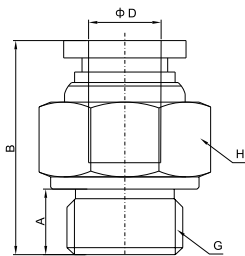
	55° G(BSPP) Thread			
Code	G01	G02	G03	G04
Thread	G1/8	G1/4	G3/8	G1/2

Metric Size-G(BSPP)Thread Fittings

Metric Size-G(BSPP)Thread Fittings

PC-G

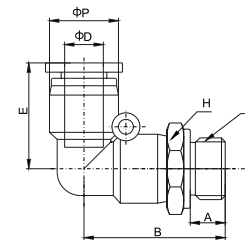
Male Straight



Model	ΦD	G	A	B	H
PC04-G01	4	G1/8	5.5	20	14
PC04-G02		G1/4	7.5	19	17
PC06-G01	6	G1/8	5.5	21.2	14
PC06-G02		G1/4	7.5	22.2	17
PC06-G03		G3/8	8.5	21	20
PC06-G04		G1/2	11	23.8	24
PC08-G01	8	G1/8	5.5	25.3	14
PC08-G02		G1/4	7.5	24.5	17
PC08-G03		G3/8	8.5	22.2	20
PC08-G04		G1/2	11	24.5	24
PC10-G01	10	G1/8	5.5	29	17
PC10-G02		G1/4	7.5	30.5	17
PC10-G03		G3/8	8.5	28	20
PC10-G04		G1/2	11	26	24
PC12-G01	12	G1/8	5.5	30	20
PC12-G02		G1/4	7.5	32	20
PC12-G03		G3/8	8.5	32.5	20
PC12-G04		G1/2	11	31	24
PC16-G02	16	G1/4	7.5	35.5	24
PC16-G03		G3/8	8.5	37.5	24
PC16-G04		G1/2	11	40	24

PL-G

Male Elbow



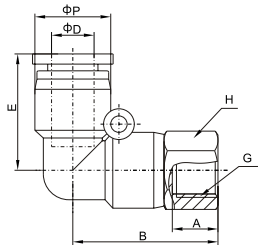
Model	ΦD	E	B	ΦP	A	G	H
PL04-G01	4	18	23.8	11	5.5	G1/8	14
PL04-G02		18	27.8	11	7.5	G1/4	17
PL06-G01	6	19	24.2	13.4	5.5	G1/8	14
PL06-G02		19	27.2	13.4	7.5	G1/4	17
PL06-G03		19	28.2	13.4	8.5	G3/8	20
PL06-G04		19	32.7	13.4	11	G1/2	24
PL08-G01	8	23	27.5	15	5.5	G1/8	14
PL08-G02		23	31	15	7.5	G1/4	17
PL08-G03		23	32	15	8.5	G3/8	20
PL08-G04		23	35	15	11	G1/2	24
PL10-G01	10	27.5	32.3	18.8	5.5	G1/8	17
PL10-G02		27.5	35.3	18.8	7.5	G1/4	17
PL10-G03		27.5	35.8	18.8	8.5	G3/8	20
PL10-G04		27.5	39.5	18.8	11	G1/2	24
PL12-G01	12	29.5	35.5	21	5.5	G1/8	20
PL12-G02		29.5	37.5	21	7.5	G1/4	20
PL12-G03		29.5	38	21	8.5	G3/8	20
PL12-G04		29.5	43	21	11	G1/2	24
PL16-G02	16	31.5	40	26	7.5	G1/4	24
PL16-G03		31.5	41	26	8.5	G3/8	24
PL16-G04		31.5	44	26	11	G1/2	24

Metric Size-G(BSPP)Thread Fittings

Metric Size-G(BSPP)Thread Fittings

PLF-G

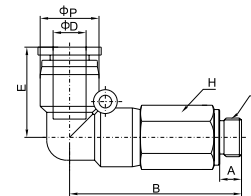
Female Elbow



Model	ΦD	E	B	ΦP	A	G	H
PLF04-G01	4	18	21	11	5.5	G1/8	14
PLF04-G02		18	25.5	11	7.5	G1/4	17
PLF06-G01	6	19	22.5	13.4	5.5	G1/8	12
PLF06-G02		19	25	13.4	7.5	G1/4	17
PLF06-G03		19	27.5	13.4	8.5	G3/8	21
PLF06-G04		19	39	13.4	11	G1/2	24
PLF08-G01	8	23	26.5	15	5.5	G1/8	14
PLF08-G02		23	29	15	7.5	G1/4	17
PLF08-G03		23	31	15	8.5	G3/8	21
PLF08-G04		23	32	15	11	G1/2	24
PLF10-G01	10	27.5	31	18.8	5.5	G1/8	17
PLF10-G02		27.5	34	18.8	7.5	G1/4	17
PLF10-G03		27.5	35	18.8	8.5	G3/8	21
PLF10-G04		27.5	36	18.8	11	G1/2	24
PLF12-G01	12	29.5	32.5	21	5.5	G1/8	21
PLF12-G02		29.5	36	21	7.5	G1/4	21
PLF12-G03		29.5	37	21	8.5	G3/8	21
PLF12-G04		29.5	38	21	11	G1/2	24

PLL-G

Extended Male



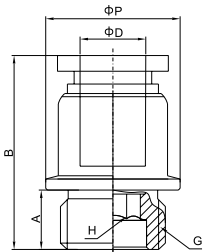
Model	ΦD	E	B	ΦP	A	G	H
PLL04-G01	4	18	35	11	5.5	G1/8	14
PLL04-G02		18	38	11	7.5	G1/4	17
PLL06-G01	6	19	38	13.4	5.5	G1/8	14
PLL06-G02		19	41	13.4	7.5	G1/4	17
PLL06-G03		19	42	13.4	8.5	G3/8	20
PLL06-G04		19	45	13.4	11	G1/2	24
PLL08-G01	8	23	43	15	5.5	G1/8	14
PLL08-G02		23	45	15	7.5	G1/4	17
PLL08-G03		23	47	15	8.5	G3/8	20
PLL08-G04		23	50	15	11	G1/2	24
PLL10-G01	10	27.5	52	18.8	5.5	G1/8	17
PLL10-G02		27.5	54	18.8	7.5	G1/4	17
PLL10-G03		27.5	55	18.8	8.5	G3/8	20
PLL10-G04		27.5	58.5	18.8	11	G1/2	24
PLL12-G01	12	29.5	59	21	5.5	G1/8	20
PLL12-G02		29.5	59.5	21	7.5	G1/4	20
PLL12-G03		29.5	60.5	21	8.5	G3/8	20
PLL12-G04		29.5	64	21	11	G1/2	24
PLL16-G02	16	31.5	70	26	7.5	G1/4	24
PLL16-G03		31.5	73	26	8.5	G3/8	24
PLL16-G04		31.5	76	26	11	G1/2	24

Metric Size-G(BSPP)Thread Fittings

Metric Size-G(BSPP)Thread Fittings

POC-G

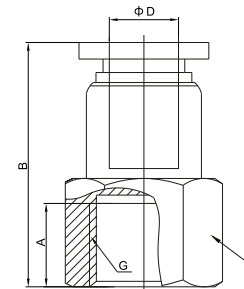
Hex.Holed Straight



Model	ΦD	G	A	B	ΦP	H
POC04-G01	4	G1/8	5.5	20	14	3
POC04-G02		G1/4	7.5	19	17	3
POC06-G01	6	G1/8	5.5	21.2	14	4
POC06-G02		G1/4	7.5	22.2	17	4
POC06-G03		G3/8	8.5	21	20	4
POC06-G04		G1/2	11	23.8	24	4
POC08-G01	8	G1/8	5.5	25.3	14	5
POC08-G02		G1/4	7.5	24.5	17	5
POC08-G03		G3/8	8.5	22.2	20	6
POC08-G04		G1/2	11	24.5	24	6
POC10-G01	10	G1/8	5.5	29	17	5
POC10-G02		G1/4	7.5	30.5	17	6
POC10-G03		G3/8	8.5	28	20	8
POC10-G04		G1/2	11	26	24	8
POC12-G01	12	G1/8	5.5	30	20	5
POC12-G02		G1/4	7.5	32	20	6
POC12-G03		G3/8	8.5	32.5	20	8
POC12-G04		G1/2	11	31	24	8
POC16-G02	16	G1/4	7.5	35.5	24	6
POC16-G03		G3/8	8.5	37.5	24	8
POC16-G04		G1/2	11	40	24	10

PCF-G

Female Straight



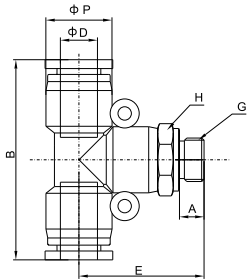
Model	ΦD	G	A	B	H
PCF04-G01	4	G1/8	7	22	14
PCF04-G02		G1/4	10	25	17
PCF06-G01	6	G1/8	7	23.5	14
PCF06-G02		G1/4	10	26.5	17
PCF06-G03		G3/8	11	27.5	21
PCF06-G04		G1/2	13	29.5	24
PCF08-G01	8	G1/8	7	25.5	14
PCF08-G02		G1/4	10	28.5	17
PCF08-G03		G3/8	11	29.5	21
PCF08-G04		G1/2	13	31.5	24
PCF10-G01	10	G1/8	7	29.5	17
PCF10-G02		G1/4	10	32.5	17
PCF10-G03		G3/8	11	33.5	21
PCF10-G04		G1/2	13	35.5	24
PCF12-G02	12	G1/4	10	33	21
PCF12-G03		G3/8	11	34	21
PCF12-G04		G1/2	13	36	24

Metric Size-G(BSPP)Thread Fittings

Metric Size-G(BSPP)Thread Fittings

PB-G

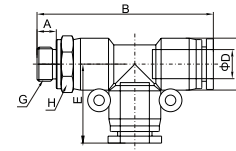
Male Branch Tee



Model	ΦD	E	B	ΦP	A	G	H
PB04-G01	4	24	36.5	11	5.5	G1/8	14
PB04-G02		27	36.5	11	7.5	G1/4	17
PB06-G01	6	25	38.5	13.4	5.5	G1/8	14
PB06-G02		28	38.5	13.4	7.5	G1/4	17
PB06-G03		29	38.5	13.4	8.5	G3/8	20
PB06-G04		34	38.5	13.4	11	G1/2	24
PB08-G01	8	28	45.5	15	5.5	G1/8	14
PB08-G02		31	45.5	15	7.5	G1/4	17
PB08-G03		33	45.5	15	8.5	G3/8	20
PB08-G04		35	45.5	15	11	G1/2	24
PB10-G01	10	33	56	18.8	5.5	G1/8	17
PB10-G02		36	56	18.8	7.5	G1/4	17
PB10-G03		37	56	18.8	8.5	G3/8	20
PB10-G04		41	56	18.8	11	G1/2	24
PB12-G01	12	36	59	21	5.5	G1/8	21
PB12-G02		38	59	21	7.5	G1/4	21
PB12-G03		38	59	21	8.5	G3/8	21
PB12-G04		41	59	21	11	G1/2	24
PB16-G02	16	39.5	63	26	7.5	G1/4	24
PB16-G03		40	63	26	8.5	G3/8	24
PB16-G04		43	63	26	11	G1/2	24

PD-G

Male Run Tee



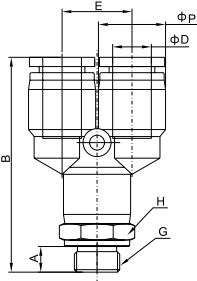
Model	ΦD	E	B	ΦP	A	G	H
PD04-G01	4	18	42	11	5.5	G1/8	14
PD04-G02		18	45	11	7.5	G1/4	17
PD06-G01	6	19	44	13.4	5.5	G1/8	14
PD06-G02		19	46	13.4	7.5	G1/4	17
PD06-G03		19	47	13.4	8.5	G3/8	20
PD06-G04		19	52	13.4	11	G1/2	24
PD08-G01	8	23	50	15	5.5	G1/8	14
PD08-G02		23	53	15	7.5	G1/4	17
PD08-G03		23	55	15	8.5	G3/8	20
PD08-G04		23	58	15	11	G1/2	24
PD10-G01	10	28	61	18.8	5.5	G1/8	17
PD10-G02		28	63	18.8	7.5	G1/4	17
PD10-G03		28	65	18.8	8.5	G3/8	20
PD10-G04		28	68	18.8	11	G1/2	24
PD12-G01	12	29.5	65	21	5.5	G1/8	21
PD12-G02		29.5	66.5	21	7.5	G1/4	21
PD12-G03		29.5	67.5	21	8.5	G3/8	21
PD12-G04		29.5	70	21	11	G1/2	24
PD16-G02	16	31	71	26	7.5	G1/4	24
PD16-G03		31	73	26	8.5	G3/8	24
PD16-G04		31	75	26	11	G1/2	24

Metric Size-G(BSPP)Thread Fittings

Metric Size-G(BSPP)Thread Fittings

PX-G

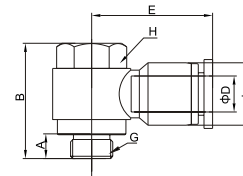
Male Run Y



Model	ϕD	E	B	ϕP	A	G	H
PX04-G01	4	11	41	11	5.5	G1/8	14
PX04-G02		11	43	11	7.5	G1/4	17
PX06-G01	6	13.4	43	13.4	5.5	G1/8	14
PX06-G02		13.4	46	13.4	7.5	G1/4	17
PX06-G03		13.4	47	13.4	8.5	G3/8	20
PX06-G04		13.4	51	13.4	11	G1/2	24
PX08-G01	8	15	46	15	5.5	G1/8	14
PX08-G02		15	49	15	7.5	G1/4	17
PX08-G03		15	51	15	8.5	G3/8	20
PX08-G04		15	54	15	11	G1/2	24
PX10-G01	10	18.8	60	18.8	5.5	G1/8	17
PX10-G02		18.8	63	18.8	7.5	G1/4	17
PX10-G03		18.8	64	18.8	8.5	G3/8	20
PX10-G04		18.8	65	18.8	11	G1/2	24
PX12-G01	12	21	65	21	5.5	G1/8	20
PX12-G02		21	68	21	7.5	G1/4	20
PX12-G03		21	70	21	8.5	G3/8	20
PX12-G04		21	72	21	11	G1/2	24

PH-G

Male Single Banjo



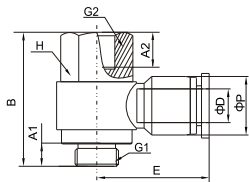
Model	ϕD	E	B	ϕP	A	G	H
PH04-G01	4	22.5	26	11	5.5	G1/8	12
PH04-G02		24	23.5	11	7.5	G1/4	14
PH06-G01	6	23	23.5	13.4	5.5	G1/8	12
PH06-G02		25	26	13.4	7.5	G1/4	14
PH06-G03		27	31.5	13.4	8.5	G3/8	19
PH08-G01	8	25.5	23.5	15	5.5	G1/8	12
PH08-G02		28.5	26	15	7.5	G1/4	14
PH08-G03		29.5	31.5	15	8.5	G3/8	19
PH08-G04		32.5	38.5	15	11	G1/2	24
PH10-G01	10	30	23.5	18.8	5.5	G1/8	12
PH10-G02		32	26	18.8	7.5	G1/4	14
PH10-G03		33	31.5	18.8	8.5	G3/8	19
PH10-G04		36	38.5	18.8	11	G1/2	24
PH12-G02	12	34	26	21	7.5	G1/4	14
PH12-G03		35.5	31.5	21	8.5	G3/8	19
PH12-G04		36.5	38.5	21	11	G1/2	24

Metric Size-G(BSPP)Thread Fittings

Metric Size-G(BSPP)Thread Fittings

PHF-G

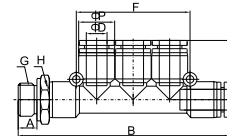
Female Banjo



Model	ΦD	E	B	ΦP	A1	A2	G1	G2	H
PHF04-G01	4	22.5	29.5	11	5.5	7	G1/8	G1/8	12
PHF04-G02		24	34.5	11	7.5	10	G1/4	G1/4	17
PHF06-G01	6	23	29.5	13.4	5.5	7	G1/8	G1/8	12
PHF06-G02		25	34.5	13.4	7.5	10	G1/4	G1/4	17
PHF06-G03		27	40.5	13.4	8.5	11	G3/8	G3/8	21
PHF08-G01	8	25.5	29.5	15	5.5	7	G1/8	G1/8	12
PHF08-G02		28.5	34.5	15	7.5	10	G1/4	G1/4	17
PHF08-G03		29.5	40.5	15	8.5	11	G3/8	G3/8	21
PHF08-G04		32.5	47.5	15	11	13	G1/2	G1/2	24
PHF10-G01	10	30	34.5	18.8	5.5	7	G1/8	G1/8	12
PHF10-G02		32	34.5	18.8	7.5	10	G1/4	G1/4	17
PHF10-G03		33	40.5	18.8	8.5	11	G3/8	G3/8	21
PHF10-G04		36	47.5	18.8	11	13	G1/2	G1/2	24
PHF12-G02	12	34	34.5	21	7.5	10	G1/4	G1/4	17
PHF12-G03		35.5	40.5	21	8.5	11	G3/8	G3/8	21
PHF12-G04		36.5	47.5	21	11	13	G1/2	G1/2	24

PKB-G

Male Branch Triple

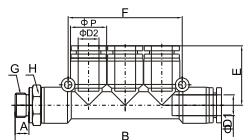


Model	ΦD	B	E	A	G	F	ΦP	H
PKB04-G01	4	63	19	5.5	G1/8	35.8	13.4	14
PKB04-G02		66	19	7.5	G1/4	35.8	13.4	17
PKB06-G01	6	70	20.2	5.5	G1/8	42.8	15	14
PKB06-G02		73	20.2	7.5	G1/4	42.8	15	17
PKB06-G03		75	20.2	8.5	G3/8	42.8	15	20
PKB08-G01	8	86	23.8	5.5	G1/8	49.6	18.8	14
PKB08-G02		89	23.8	7.5	G1/4	49.6	18.8	17
PKB08-G03		90	23.8	8.5	G3/8	49.6	18.8	20
PKB10-G02	10	101	29	7.5	G1/4	59.6	21	17
PKB10-G03		103	29	8.5	G3/8	59.6	21	17
PKB10-G04		106	29	11	G1/2	59.6	21	24

Metric Size-G(BSPP)Thread Fittings

PKD-G

Male Reduced Branch Triple



Model	ΦD1	ΦD2	B	E	A	G	F	ΦP	H
PKD06-04-G01	6	4	62	19	5.5	G1/8	35.8	13.4	14
PKD06-04-G02			65.5	19	7.5	G1/4	35.8	13.4	17
PKD08-06-G01	8	6	69	20.2	5.5	G1/8	42.8	15	14
PKD08-06-G02			72	20.2	7.5	G1/4	42.8	15	17
PKD08-06-G03			73	20.2	8.5	G3/8	42.8	15	20
PKD10-08-G01	10	8	85	23.8	5.5	G1/8	49.6	18.8	14
PKD10-08-G02			88	23.8	7.5	G1/4	49.6	18.8	17
PKD10-08-G03			90	23.8	8.5	G3/8	49.6	18.8	20
PKD12-10-G02	12	10	102	29	7.5	G1/4	59.6	21	17
PKD12-10-G03			103	29	8.5	G3/8	59.6	21	17
PKD12-10-G04			108	29	11	G1/2	59.6	21	24

Inch Size-NPT Thread Fittings



Characteristics

1. Quick installation, simple and flexible, space-saving.
2. The tube fitting comes in a wide variety of models to meet all your needs in pneumatic piping.
3. Even after installation, the direction of tubing can be changed freely.
4. The release ring adopts the ellipse design to make it more convenient and labor-saving for disconnection.
5. All taper threads are pre-coated with Teflon with fine seal performance.
6. PC type fittings are equipped with the internal hexagonal holes. It is easy for them to be mounted in the narrow places.

Specification

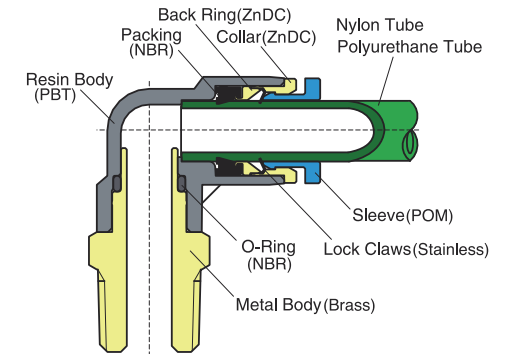
Fluid	Air, Vacuum	
Pressure Range	0~1.0MPa	0~150PSI
Negative Pressure	-100KPa(10Torr)	-29.5In Hg
Max Pressure	1.5MPa	250PSI
Temperature Range	0~60°C	32~140°F
Applicable Tube	PU (Polyurethane)	PA(Nylon)

Product Code System

PC 1/4 - N01

- ① ② ③

Structure Chart



- ① **Type**
- ② **Tube Outer Diameter**

Inch Size							
Code	1/8	5/32	3/16	1/4	5/16	3/8	1/2
Tube Outer Diameter	Φ1/8	Φ5/32	Φ3/16	Φ1/4	Φ5/16	Φ3/8	Φ1/2

- ③ **Thread Type and Size**

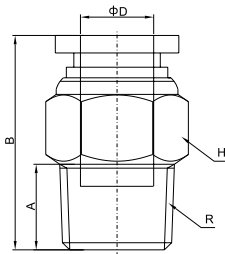
	UNF	NPT 60° American Standard Taper Pipe Thread				
Code	U10	N01	N02	N03	N04	N06
Thread	10-32UNF	NPT1/8	NPT1/4	NPT3/8	NPT1/2	NPT3/4

Inch Size-NPT Thread Fittings

Inch Size-NPT Thread Fittings

PC

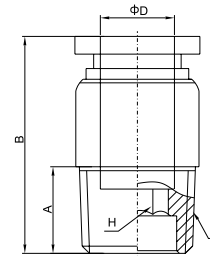
Male Straight



Model	ΦD	R	A	B	H	
PC1/8-U10	1/8	10-32UNF	4.5	18	7/16	
PC1/8-N01		NPT1/8	7.5	20	7/16	
PC1/8-N02		NPT1/4	10.5	20	9/16	
PC5/32-U10	5/32	10-32UNF	4.5	20	7/16	
PC5/32-N01		NPT1/8	7.5	20	7/16	
PC5/32-N02		NPT1/4	10.5	21.5	9/16	
PC1/4-U10	1/4	10-32UNF	4.5	21	1/2	
PC1/4-N01		NPT1/8	7.5	21	1/2	
PC1/4-N02		NPT1/4	10.5	22	9/16	
PC1/4-N03		NPT3/8	11	22	11/16	
PC1/4-N04		NPT1/2	14	25	7/8	
PC5/16-N01		5/16	NPT1/8	7.5	25.5	9/16
PC5/16-N02			NPT1/4	10.5	25.5	9/16
PC5/16-N03	NPT3/8		11	23	11/16	
PC5/16-N04	NPT1/2		14	26	7/8	
PC3/8-N01	3/8	NPT1/8	7.5	30	11/16	
PC3/8-N02		NPT1/4	10.5	32	11/16	
PC3/8-N03		NPT3/8	11	29.5	11/16	
PC3/8-N04		NPT1/2	14	27	7/8	
PC1/2-N01	1/2	NPT1/8	7.5	31.5	7/8	
PC1/2-N02		NPT1/4	10.5	33.5	7/8	
PC1/2-N03		NPT3/8	11	30	7/8	
PC1/2-N04		NPT1/2	14	28.5	7/8	

POC

Hex. Holed Straight



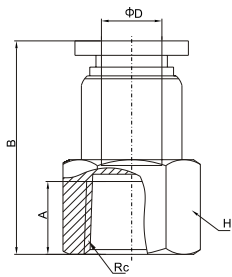
Model	ΦD	R	A	B	H
POC1/8-U10	1/8	10-32UNF	4.5	18	3/32
POC1/8-N01		NPT1/8	7.5	20	3/32
POC1/8-N02		NPT1/4	10.5	20	3/32
POC5/32-U10	5/32	10-32UNF	4.5	20	3/32
POC5/32-N01		NPT1/8	7.5	20	3/32
POC5/32-N02		NPT1/4	10.5	21.5	3/32
POC1/4-U10	1/4	10-32UNF	4.5	21	5/32
POC1/4-N01		NPT1/8	7.5	21	5/32
POC1/4-N02		NPT1/4	10.5	22	5/32
POC1/4-N03		NPT3/8	11	22	5/32
POC5/16-N01	5/16	NPT1/8	7.5	25.5	3/16
POC5/16-N02		NPT1/4	10.5	25.5	7/32
POC5/16-N03		NPT3/8	11	23	7/32
POC3/8-N01	3/8	NPT1/8	7.5	30	7/32
POC3/8-N02		NPT1/4	10.5	32	7/32
POC3/8-N03		NPT3/8	11	29.5	5/16
POC3/8-N04		NPT1/2	14	27	5/16
POC1/2-N02	1/2	NPT1/4	10.5	33.5	1/4
POC1/2-N03		NPT3/8	11	30	5/16
POC1/2-N04		NPT1/2	14	28.5	5/16

Inch Size-NPT Thread Fittings

Inch Size-NPT Thread Fittings

PCF

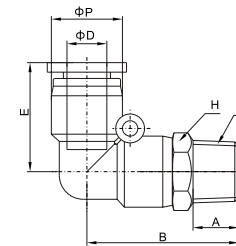
Female Straight



Model	ΦD	Rc	A	B	H
PCF1/8-N01	1/8	NPT1/8	8.5	25.5	9/16
PCF1/8-N02		NPT1/4	11.5	28.5	11/16
PCF5/32-N01	5/32	NPT1/8	8.5	25.5	9/16
PCF5/32-N02		NPT1/4	11.5	28.5	11/16
PCF1/4-N01	1/4	NPT1/8	8.5	27.5	9/16
PCF1/4-N02		NPT1/4	11.5	29.5	11/16
PCF1/4-N03		NPT3/8	12	31.5	7/8
PCF5/16-N01	5/16	NPT1/8	8.5	27.5	9/16
PCF5/16-N02		NPT1/4	11.5	31.5	11/16
PCF5/16-N03		NPT3/8	12	31.5	7/8
PCF5/16-N04		NPT1/2	15	33.5	7/8
PCF3/8-N01	3/8	NPT1/8	8.5	31.5	9/16
PCF3/8-N02		NPT1/4	11.5	34.5	11/16
PCF3/8-N03		NPT3/8	12	35.5	7/8
PCF3/8-N04		NPT1/2	15	37.5	7/8
PCF1/2-N02	1/2	NPT1/4	11.5	35	7/8
PCF1/2-N03		NPT3/8	12	36	7/8
PCF1/2-N04		NPT1/2	15	38	7/8

PL

Male Elbow



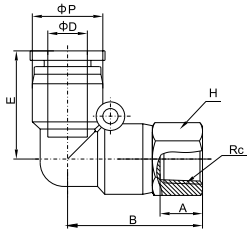
Model	ΦD	E	B	ΦP	A	R	H
PL1/8-U10	1/8	18	21.2	11	4.5	10-32UNF	7/16
PL1/8-N01		18	23.2	11	7.5	NPT1/8	7/16
PL1/8-N02		18	25.8	11	10.5	NPT1/4	9/16
PL5/32-U10	5/32	18	21.2	11	7.5	NPT1/8	7/16
PL5/32-N01		18	23.2	11	4.5	10-32UNF	7/16
PL5/32-N02		18	25.8	11	10.5	NPT1/4	9/16
PL1/4-U10	1/4	19	23.2	13.4	4.5	10-32UNF	1/2
PL1/4-N01		19	26.2	13.4	7.5	NPT1/8	1/2
PL1/4-N02		19	29.2	13.4	10.5	NPT1/4	9/16
PL1/4-N03		19	30.2	13.4	11	NPT3/8	11/16
PL1/4-N04	19	34.7	13.4	14	NPT1/2	7/8	
PL5/16-N01	5/16	23	29.5	15	7.5	NPT1/8	9/16
PL5/16-N02		23	33	15	10.5	NPT1/4	9/16
PL5/16-N03		23	34	15	11	NPT3/8	11/16
PL5/16-N04		23	37	15	14	NPT1/2	7/8
PL3/8-N01	3/8	27.5	34.3	18.8	7.5	NPT1/8	11/16
PL3/8-N02		27.5	37.3	18.8	10.5	NPT1/4	11/16
PL3/8-N03		27.5	38.8	18.8	11	NPT3/8	11/16
PL3/8-N04		27.5	41.5	18.8	14	NPT1/2	7/8
PL1/2-N01	1/2	29.5	37.5	21	7.5	NPT1/8	7/8
PL1/2-N02		29.5	39.5	21	10.5	NPT1/4	7/8
PL1/2-N03		29.5	40	21	11	NPT3/8	7/8
PL1/2-N04		29.5	45	21	14	NPT1/2	7/8

Inch Size-NPT Thread Fittings

Inch Size-NPT Thread Fittings

PLF

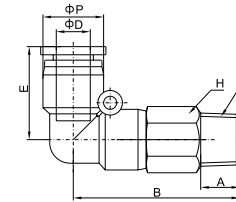
Female Elbow



Model	ΦD	E	B	ΦP	A	R	H
PLF1/8-N01	1/8	18	22.2	11	7.5	NPT1/8	9/16
PLF1/8-N02		18	25.5	11	10.5	NPT1/4	11/16
PLF5/32-N01	5/32	18	22.2	11	7.5	NPT1/8	9/16
PLF5/32-N02		18	25.5	11	10.5	NPT1/4	11/16
PLF1/4-N01	1/4	19	26.2	13.4	7.5	NPT1/8	9/16
PLF1/4-N02		19	28.2	13.4	10.5	NPT1/4	11/16
PLF1/4-N03		19	29.8	13.4	11	NPT3/8	7/8
PLF1/4-N04		19	31.8	13.4	14	NPT1/2	7/8
PLF5/16-N01	5/16	23	28.5	15	7.5	NPT1/8	9/16
PLF5/16-N02		23	32	15	10.5	NPT1/4	11/16
PLF5/16-N03		23	33	15	11	NPT3/8	7/8
PLF5/16-N04		23	35	15	14	NPT1/2	7/8
PLF3/8-N01	3/8	27.5	32.8	18.8	7.5	NPT1/8	11/16
PLF3/8-N02		27.5	36	18.8	10.5	NPT1/4	11/16
PLF3/8-N03		27.5	37	18.8	11	NPT3/8	7/8
PLF3/8-N04		27.5	39	18.8	14	NPT1/2	7/8
PLF1/2-N01	1/2	29.5	34.5	21	7.5	NPT1/8	7/8
PLF1/2-N02		29.5	38	21	10.5	NPT1/4	7/8
PLF1/2-N03		29.5	39	21	11	NPT3/8	7/8
PLF1/2-N04		29.5	41	21	14	NPT1/2	7/8

PLL

Extended Male Elbow



Model	ΦD	E	B	ΦP	A	R	H
PLL1/8-U10	1/8	18	33	11	4.5	10-32UNF	7/16
PLL1/8-N01		18	33	11	7.5	NPT1/8	7/16
PLL1/8-N02	5/32	18	35	11	10.5	NPT1/4	9/16
PLL5/32-U10		18	33	11	4.5	10-32UNF	7/16
PLL5/32-N01	5/32	18	33	11	7.5	NPT1/8	7/16
PLL5/32-N02		18	35	11	10.5	NPT1/4	9/16
PLL1/4-U10	1/4	19	38.5	13.4	4.5	10-32UNF	1/2
PLL1/4-N01		19	38.5	13.4	7.5	NPT1/8	1/2
PLL1/4-N02		19	41	13.4	10.5	NPT1/4	9/16
PLL1/4-N03		19	42.5	13.4	11	NPT3/8	11/16
PLL1/4-N04	5/16	19	46	13.4	14	NPT1/2	7/8
PLL5/16-N01		23	43.5	15	7.5	NPT1/8	9/16
PLL5/16-N02		23	45.5	15	10.5	NPT1/4	9/16
PLL5/16-N03		23	47.5	15	11	NPT3/8	11/16
PLL5/16-N04	3/8	23	51	15	14	NPT1/2	7/8
PLL3/8-N01		27.5	53	18.8	7.5	NPT1/8	11/16
PLL3/8-N02		27.5	55	18.8	10.5	NPT1/4	11/16
PLL3/8-N03		27.5	56	18.8	11	NPT3/8	11/16
PLL3/8-N04	1/2	27.5	59.5	18.8	14	NPT1/2	7/8
PLL1/2-N01		29.5	60	21	7.5	NPT1/8	7/8
PLL1/2-N02		29.5	60.5	21	10.5	NPT1/4	7/8
PLL1/2-N03		29.5	61.5	21	11	NPT3/8	7/8
PLL1/2-N04	1/2	29.5	65	21	14	NPT1/2	7/8

Inch Size-NPT Thread Fittings

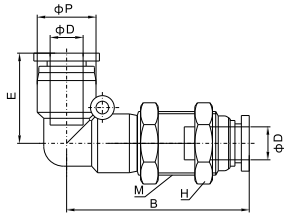
Inch Size-NPT Thread Fittings

PLM

Bulkhead Elbow



Model	ΦD	E	B	ΦP	A	M	H
PLM 1/8	1/8	17.5	43.1	11	7	M12	9/16
PLM 5/32	5/32	18	43.6	11	7	M12	9/16
PLM 1/4	1/4	19	46.5	13.4	9.5	M14	11/16
PLM 5/16	5/16	23	53.5	15	4	M16	3/4
PLM 3/8	3/8	27.5	63.8	18.8	7	M20	7/8
PLM1/2	1/2	29.5	69.2	21	9.5	M22	1

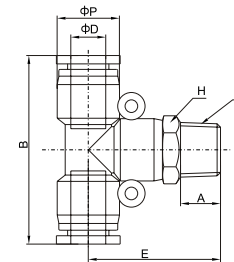


PB

Male Branch Tee



Model	ΦD	E	B	ΦP	A	R	H
PB1/8-U10	1/8	22.5	36.5	11	4.5	10-32UNF	7/16
PB1/8-N01		25.5	36.5	11	7.5	NPT1/8	7/16
PB1/8-N02		28.5	36.5	11	10.5	NPT1/4	9/16
PB5/32-U10	5/32	22.5	36.5	11	4.5	10-32UNF	7/16
PB5/32-0N1		25.5	36.5	11	7.5	NPT1/8	7/16
PB5/32-N02		28.5	36.5	11	10.5	NPT1/4	9/16
PB1/4-U10	1/4	23.5	38.5	13.4	4.5	10-32UNF	1/2
PB1/4-N01		26.5	38.5	13.4	7.5	NPT1/8	1/2
PB1/4-N02		29.5	38.5	13.4	10.5	NPT1/4	9/16
PB1/4-N03		30.5	38.5	13.4	11	NPT3/8	11/16
PB1/4-N04	35	38.5	13.4	14	NPT1/2	7/8	
PB5/16-N01	5/16	29	45.5	15	7.5	NPT1/8	9/16
PB5/16-N02		33	45.5	15	10.5	NPT1/4	9/16
PB5/16-N03		34	45.5	15	11	NPT3/8	11/16
PB5/16-N04		37	45.5	15	14	NPT1/2	7/8
PB3/8-N01	3/8	35	56	18.8	7.5	NPT1/8	11/16
PB3/8-N02		38	56	18.8	10.5	NPT1/4	11/16
PB3/8-N03		38.5	56	18.8	11	NPT3/8	11/16
PB3/8-N04		42.5	56	18.8	14	NPT1/2	7/8
PB1/2-N01	1/2	37.5.5	59	21	7.5	NPT1/8	7/8
PB1/2-N02		39.5	59	21	10.5	NPT1/4	7/8
PB1/2-N03		42	59	21	11	NPT3/8	7/8
PB1/2-N04		43	59	21	14	NPT1/2	7/8

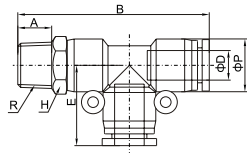


Inch Size-NPT Thread Fittings

Inch Size-NPT Thread Fittings

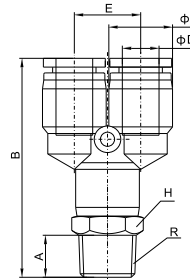
PD

Male Run Tee



Model	ΦD	E	B	ΦP	A	R	H
PD1/8-U10	1/8	18	38.5	11	4.5	10-32UNF	7/16
PD1/8-N01		18	41.5	11	7.5	NPT1/8	7/16
PD1/8-N02		18	44	11	10.5	NPT1/4	9/16
PD5/32-U10	5/32	18	38.5	11	4.5	10-32UNF	7/16
PD5/32-N01		18	41.5	11	7.5	NPT1/8	7/16
PD5/32-N02		18	44	11	10.5	NPT1/4	9/16
PD1/4-U10	1/4	19	43	13.4	4.5	10-32UNF	1/2
PD1/4-N01		19	46	13.4	7.5	NPT1/8	1/2
PD1/4-N02		19	48.5	13.4	10.5	NPT1/4	9/16
PD1/4-N03		19	49.5	13.4	11	NPT3/8	11/16
PD1/4-N04		19	54	13.4	14	NPT1/2	7/8
PD5/16-N01	5/16	23	52.5	15	7.5	NPT1/8	9/16
PD5/16-N02		23	56	15	10.5	NPT1/4	9/16
PD5/16-N03		23	57	15	11	NPT3/8	11/16
PD5/16-N04		23	60	15	14	NPT1/2	7/8
PD3/8-N01	3/8	28	63	18.8	7.5	NPT1/8	11/16
PD3/8-N02		28	66	18.8	10.5	NPT1/4	11/16
PD3/8-N03		28	67.5	18.8	11	NPT3/8	11/16
PD3/8-N04		28	70	18.8	14	NPT1/2	7/8
PD1/2-N01	1/2	29.5	67	21	7.5	NPT1/8	7/8
PD1/2-N02		29.5	69	21	10.5	NPT1/4	7/8
PD1/2-N03		29.5	69.5	21	11	NPT3/8	7/8
PD1/2-N04		29.5	72.5	21	14	NPT1/2	7/8

PX



Male Y

Model	ΦD	E	B	ΦP	A	R	H
PX1/8-U10	1/8	11	40	11	4.5	10-32UNF	7/16
PX1/8-N01		11	43	11	7.5	NPT1/8	7/16
PX1/8-N02		11	46	11	10.5	NPT1/4	9/16
PX5/32-U10	5/32	11	40	11	7.5	NPT1/8	7/16
PX5/32-N01		11	43	11	4.5	10-32UNF	7/16
PX5/32-N02		11	46	11	10.5	NPT1/4	9/16
PX1/4-U10	1/4	13.4	41.5	13.4	4.5	10-32UNF	1/2
PX1/4-N01		13.4	44.5	13.4	7.5	NPT1/8	1/2
PX1/4-N02		13.4	47.5	13.4	10.5	NPT1/4	9/16
PX1/4-N03		13.4	48.5	13.4	11	NPT3/8	11/16
PX1/4-N04		13.4	52.5	13.4	14	NPT1/2	7/8
PX5/16-N01	5/16	15	47	15	7.5	NPT1/8	9/16
PX5/16-N02		15	50.5	15	10.5	NPT1/4	9/16
PX5/16-N03		15	52	15	11	NPT3/8	11/16
PX5/16-N04		15	55	15	14	NPT1/2	7/8
PX3/8-N01	3/8	18.8	61	18.8	7.5	NPT1/8	11/16
PX3/8-N02		18.8	64	18.8	10.5	NPT1/4	11/16
PX3/8-N03		18.8	65	18.8	11	NPT3/8	11/16
PX3/8-N04		18.8	67.5	18.8	14	NPT1/2	7/8
PX1/2-N01	1/2	21	66	21	7.5	NPT1/8	7/8
PX1/2-N02		21	71	21	10.5	NPT1/4	7/8
PX1/2-N03		21	71.5	21	11	NPT3/8	7/8
PX1/2-N04		21	73	21	14	NPT1/2	7/8

PMF

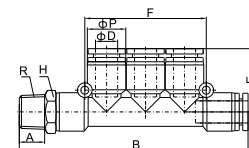
Bulkhead Female Straight



Model	ΦD	Rc	A	B	M	E	H1	H2
PMF 5/32-N01	5/32	NPT1/8	8.5	23.5	M12	5	9/16	9/16
PMF 5/32-N02		NPT1/4	11.5	26.5	M12	5	11/16	9/16
PMF 1/4-N01	1/4	NPT 1/8	8.5	25	M12	7	11/16	11/16
PMF 1/4-N02		NPT 1/4	11.5	28	M14	7	11/16	11/16
PMF 1/4-N03		NPT 3/8	12.5	29	M14	7	3/4	11/16
PMF 5/16-N01	5/16	NPT 1/8	8.5	27	M16	8	3/4	3/4
PMF 5/16-N02		NPT 1/4	11.5	30	M16	8	3/4	3/4
PMF 5/16-N03		NPT 3/8	12.5	31	M16	8	3/4	3/4
PMF 5/16-N04		NPT 1/2	14.5	33	M16	8	3/4	3/4
PMF 3/8-N01	3/8	NPT 1/8	8.5	31	M20	8.5	1	1
PMF 3/8-N02		NPT 1/4	11.5	34	M20	8.5	1	1
PMF 3/8-N03		NPT 3/8	12.5	35	M20	8.5	1	1
PMF 3/8-N04		NPT 1/2	14.5	37	M20	8.5	1	1
PMF1/2-N01	1/2	NPT 1/8	8.5	34.5	M22	9	1	1
PMF1/2-N02		NPT 1/4	11.5	34.5	M22	9	1	1
PMF1/2-N03		NPT 3/8	12.5	35.5	M22	9	1	1
PMF1/2-N04		NPT 1/2	14.5	37.5	M22	9	1	1

PKB

Male Branch Triple



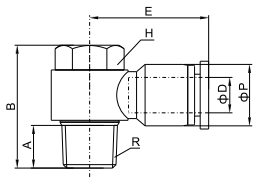
Model	ΦD	B	E	A	Rc	F	ΦP	H
PKB 5/32-N01	5/32	64	19	7.5	NPT1/8	35.8	13.4	7/16
PKB 5/32-N02		68	19	10.5	NPT1/4	35.8	13.4	9/16
PKB 1/4-N01	1/4	71	20.2	7.5	NPT1/8	42.8	15	1/2
PKB 1/4-N02		75	20.2	10.5	NPT1/4	42.8	15	9/16
PKB 1/4-N03		76	20.2	11	NPT3/8	42.8	15	11/16
PKB 5/16-N01	5/16	87	23.8	7.5	NPT1/8	49.6	18.8	9/16
PKB 5/16-N02		90	23.8	10.5	NPT1/4	49.6	18.8	9/16
PKB 5/16-N03		91.5	23.8	11	NPT3/8	49.6	18.8	11/16
PKB 3/8-N02		3/8	105	29	10.5	NPT1/4	59.6	21
PKB 3/8-N03	106.5		29	11	NPT3/8	59.6	21	7/8
PKB 3/8-N04	112		29	14	NPT1/2	59.6	21	7/8

Inch Size-NPT Thread Fittings

Inch Size-NPT Thread Fittings

PH

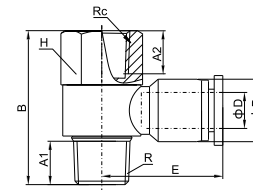
Male Banjo



Model	ΦD	E	B	ΦP	A	R	H
PH5/32-N01	5/32	22.5	26.5	11	7.5	NPT1/8	7/16
PH5/32-N02		24	24.5	11	10.5	NPT1/4	9/16
PH1/4-N01	1/4	23	24	13.4	7.5	NPT1/8	1/2
PH1/4-N02		25	27	13.4	10.5	NPT1/4	9/16
PH1/4-N03	5/16	27	32.5	13.4	11	NPT3/8	11/16
PH5/16-N01		25.5	24	15	7.5	NPT1/8	9/16
PH5/16-N02		28.5	27	15	10.5	NPT1/4	9/16
PH5/16-N03		29.5	32.5	15	11	NPT3/8	11/16
PH5/16-N04	3/8	32.5	39.5	15	14	NPT1/2	7/8
PH3/8-N01		30	24	18.8	7.5	NPT1/8	11/16
PH3/8-N02		32	27	18.8	10.5	NPT1/4	11/16
PH3/8-N03		33	32.5	18.8	11	NPT3/8	11/16
PH3/8-N04	1/2	36	39.5	18.8	14	NPT1/2	7/8
PH1/2-N02		34	27	21	10.5	NPT1/4	7/8
PH1/2-N03		35.5	32.5	21	11	NPT3/8	7/8
PH1/2-N04		36.5	39.5	21	14	NPT1/2	7/8

PHF

Female Banjo



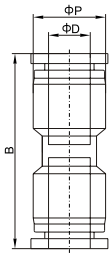
Model	ΦD	E	B	ΦP	A1	A2	Rc	R	H
PHF5/32-N01	5/32	22.5	30	11	7.5	8.5	NPT1/8	NPT1/8	7/16
PHF5/32-N02		24	35.5	11	10.5	11	NPT1/4	NPT1/4	7/16
PHF1/4-N01	1/4	23	30	13.4	7.5	8.5	NPT1/8	NPT1/8	1/2
PHF1/4-N02		25	35.5	13.4	10.5	11	NPT1/4	NPT1/4	9/16
PHF1/4-N03	5/16	27	41.5	13.4	11	11	NPT3/8	NPT3/8	11/16
PHF5/16-N01		25.5	30	15	7.5	8.5	NPT1/8	NPT1/8	9/16
PHF5/16-N02		28.5	35.5	15	10.5	11	NPT1/4	NPT1/4	9/16
PHF5/16-N03		29.5	41.5	15	11	11	NPT3/8	NPT3/8	11/16
PHF5/16-N04	3/8	32.5	48.5	15	14	14	NPT1/2	NPT1/2	7/8
PHF3/8-N01		30	35.5	18.8	7.5	8.5	NPT1/8	NPT1/8	11/16
PHF3/8-N02		32	35.5	18.8	10.5	11	NPT1/4	NPT1/4	11/16
PHF3/8-N03		33	41.5	18.8	11	11	NPT3/8	NPT3/8	11/16
PHF3/8-N04	1/2	36	48.5	18.8	14	14	NPT1/2	NPT1/2	7/8
PHF1/2-N02		34	35.5	21	10.5	11	NPT1/4	NPT1/4	7/8
PHF1/2-N03		35.5	41.5	21	11	11	NPT3/8	NPT3/8	7/8
PHF1/2-N04		36.5	48.5	21	14	14	NPT1/2	NPT1/2	7/8

Inch Size-NPT Thread Fittings

Inch Size-NPT Thread Fittings

PU

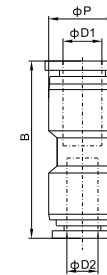
Union Straight



Model	ΦD	B	ΦP
PU1/8	1/8	32	11
PU5/32	5/32	32.5	11
PU1/4	1/4	35	13.4
PU5/16	5/16	39	15
PU3/8	3/8	47	18.8
PU1/2	1/2	48.5	21

PG

Union Straight Reducer



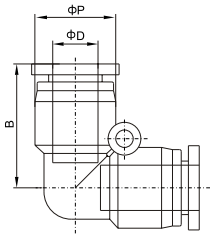
Model	ΦD1	ΦD2	B	ΦP
PG 1/4-5/32	1/4	5/32	35	13.4
PG 5/16-1/4	5/16	1/4	38.5	15
PG 3/8-5/16	3/8	5/16	46.5	18.8
PG 1/2-3/8	1/2	3/8	48	21

Inch Size-NPT Thread Fittings

Inch Size-NPT Thread Fittings

PV

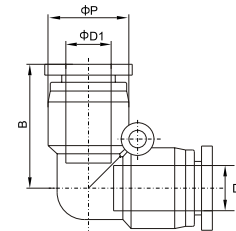
Union Elbow



Model	ΦD	B	ΦP
PV1/8	1/8	17.5	11
PV5/32	5/32	18	11
PV1/4	1/4	19	13.4
PV5/16	5/16	23	15
PV3/8	3/8	27.5	18.8
PV1/2	1/2	29.5	21

PVG

Union Elbow Reducer



Model	ΦD1	ΦD2	B	ΦP
PVG 1/4-5/32	1/4	5/32	19	13.4
PVG 5/16-1/4	5/16	1/4	23	15
PVG 3/8-5/16	3/8	5/16	27.5	18.8
PVG 1/2-3/8	1/2	3/8	29.5	21

Inch Size-NPT Thread Fittings

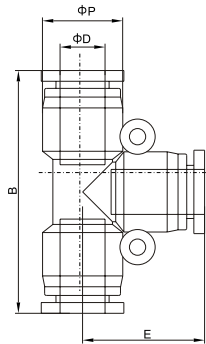
Inch Size-NPT Thread Fittings

PE

Union Tee



Model	ΦD	B	ΦP	E
PE1/8	1/8	36	11	18
PE5/32	5/32	36.5	11	18
PE1/4	1/4	38.5	13.4	19
PE5/16	5/16	45.5	15	23
PE3/8	3/8	56	18.8	28
PE1/2	1/2	58.5	21	39.5

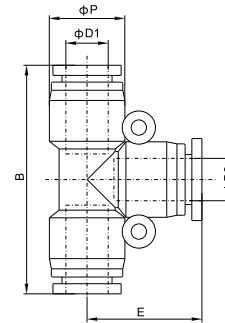


PGE

Union Tee Reducer



Model	$\Phi D1$	$\Phi D2$	B	ΦP	E
PGE 1/4-5/32	5/32	1/4	38	13.4	19
PGE 5/16-1/4	1/4	5/16	45	15	23
PGE 3/8-5/16	5/16	3/8	55.5	18.8	28
PGE 1/2-3/8	3/8	1/2	58	21	39.5



Inch Size-NPT Thread Fittings

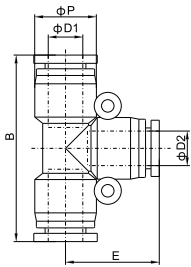
Inch Size-NPT Thread Fittings

PEG



Union Tee Reducer

Model	$\Phi D1$	$\Phi D2$	B	ΦP	E
PEG 1/4-5/32	1/4	5/32	38.5	13.4	19
PEG 5/16-1/4	5/16	1/4	45.5	15	23
PEG 3/8-5/16	3/8	5/16	56	18.8	28
PEG 1/2-3/8	1/2	3/8	58.5	21	39.5

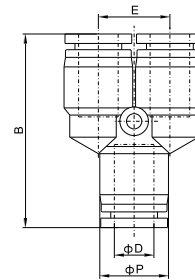


PY



Union Y

Model	ΦD	B	ΦP	E
PY 5/32	5/32	35.5	11	11
PY 1/4	1/4	37	13.4	13.4
PY 5/16	5/16	40.5	15	15
PY 3/8	3/8	49.5	18.8	18.8
PY 1/2	1/2	52.5	21	21



Inch Size-NPT Thread Fittings

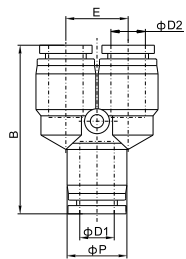
Inch Size-NPT Thread Fittings

PW



Union Y Reducer

Model	$\Phi D1$	$\Phi D2$	B	ΦP	E
PW 1/4-5/32	1/4	5/32	37	13.4	13.4
PW 5/16-1/4	5/16	1/4	40.5	15	15
PW 3/8-5/16	3/8	5/16	49.5	18.8	18.8
PW 1/2-3/8	1/2	3/8	52.5	21	21

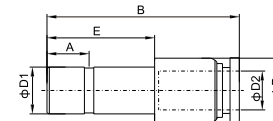


PGJ



Plug-in Reducer

Model	$\Phi D2$	E	$\Phi D1$	B	A	ΦP
PGJ 1/4-5/32	5/32	17	1/4	41	6	10
PGJ 5/16-5/32	5/32	20	5/16	44	6	10
PGJ 5/16-1/4	1/4	20	5/16	45	6	12
PGJ 3/8-1/4	1/4	23	3/8	47	8	12
PGJ 3/8-5/16	5/16	23	3/8	47	8	14
PGJ 1/2-5/16	5/16	23	1/2	54	8	14
PGJ 1/2-3/8	3/8	23	1/2	54	8	17



Inch Size-NPT Thread Fittings

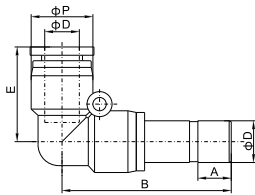
Inch Size-NPT Thread Fittings

PLJ

Plug-in Elbow



Model	ΦD	E	B	ΦP
PLJ 5/32	5/32	18	33	11
PLJ 1/4	1/4	19	36.2	13.4
PLJ 5/16	5/16	23	42.5	15
PLJ 3/8	3/8	27.5	50.8	18.8
PLJ 1/2	1/2	29.6	54.5	21

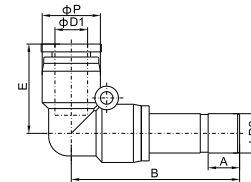


PLGJ

Plug-in Elbow Reducer



Model	$\Phi D1$	E	B	ΦP	A	$\Phi D2$
PLGJ 1/4-5/32	5/32	18	32.3	11	6	1/4
PLGJ 5/16-5/32	5/32	18	35.3	11	6	5/16
PLGJ 5/16-1/4	1/4	19	37	13.4	6	5/16
PLGJ 3/8-1/4	1/4	19	40	13.4	6	3/8
PLGJ 3/8-5/16	5/16	23	43	15	8	3/8
PLGJ 1/2-5/16	5/16	23	43	15	8	1/2
PLGJ 1/2-3/8	3/8	27.5	47	18.8	8	1/2



Inch Size-NPT Thread Fittings

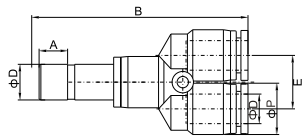
Inch Size-NPT Thread Fittings

PYJ

Plug-in Y



Model	ΦD	E	B	ΦP
PYJ 5/32	5/32	11	51	11
PYJ 1/4	1/4	13.4	54.5	13.4
PYJ 5/16	5/16	15	60.1	15
PYJ 3/8	3/8	18.8	72.9	18.8
PYJ 1/2	1/2	21	78.1	21

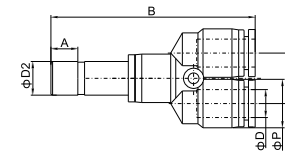


PWJ

Plug-in Y Reducer



Model	$\Phi D1$	E	B	ΦP	A	$\Phi D2$
PWJ 1/4-5/32	5/32	11	50	11	6	1/4
PWJ 5/16-5/32	5/32	11	53	11	6	5/16
PWJ 5/16-1/4	1/4	13.4	54.5	13.4	6	5/16
PWJ 3/8-1/4	1/4	13.4	57.5	13.4	6	3/8
PWJ 3/8-5/16	5/16	15	61	15	8	3/8
PWJ 1/2-5/16	5/16	15	61	15	8	1/2
PWJ 1/2-3/8	3/8	18.8	69.5	18.8	8	1/2



Inch Size-NPT Thread Fittings

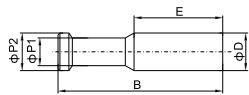
Inch Size-NPT Thread Fittings

PP

Plug



Model	ΦD	E	ΦP2	B	ΦP1
PP 5/32	5/32	15	5	28	3
PP 1/4	1/4	17	7	33	3
PP 5/16	5/16	18	9	37	4
PP 3/8	3/8	21	11	42	5
PP1/2	1/2	23	13	44	6

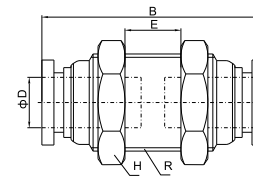


PM

Bulkhead Union



Model	ΦD	B	E	R	H
PM 5/32	5/32	30	8	M12X1	9/16
PM 1/4	1/4	33	10	M14X1	11/16
PM 5/16	5/16	36.8	12	M16X1	3/4
PM 3/8	3/8	44.5	15	M20X1	7/8
PM 1/2	1/2	46	16	M22X1	1



Inch Size-NPT Thread Fittings

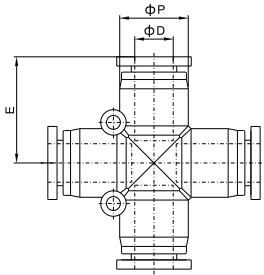
Inch Size-NPT Thread Fittings

PZA



Union Cross

Model	ΦD	E	ΦP
PZA 5/32	5/32	17.5	11
PZA 1/4	1/4	19.2	13
PZA 5/16	5/16	22.5	14.5
PZA 3/8	3/8	28	20
PZA 1/2	1/2	30	20

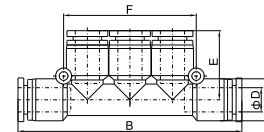


PK



Union Branch

Model	ΦD	B	E	F	ΦP
PK 5/32	5/32	57	19	35.8	13.4
PK 1/4	1/4	64	20.2	42.8	15
PK 5/16	5/16	80.6	23.8	49.6	18.8
PK 3/8	3/8	96	29	59.6	21



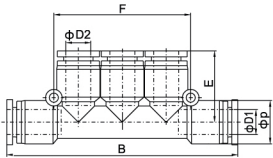
Inch Size-NPT Thread Fittings

PKG



Union Branch Reducer

Model	$\Phi D1$	B	E	$\Phi D2$	F	ΦP
PKG 1/4-5/32	1/4	57.5	19	5/32	35.8	13.4
PKG 5/16-1/4	5/16	65	20.2	1/4	42.8	15
PKG 3/8-5/16	3/8	81	23.8	5/16	49.6	18.8
PKG 1/2-3/8	1/2	97	29	3/8	59.6	21



Compact One Touch Fittings

Compact One Touch Fittings

Compact One Touch Fittings

Characteristics

1. The smallest pneumatic fittings in the world. In fact, the volume is 40% less and the outside diameter is 20% less in comparison to those of the standard type.
2. Compact One-Touch Fittings are specially designed for pneumatic installations in equipment that are small and compact in size.

Specification

Fluid	Air, Vacuum	
Pressure Range	0~1.0MPa	0~150PSI
Negative Pressure	-100KPa(10Torr)	-29.5In Hg
Max Pressure	1.5MPa	250PSI
Temperature Range	0~60°C	32~140°F
Applicable Tube	PU (Polyurethane)	PA(Nylon)

① Type

② Tube Outer Diameter

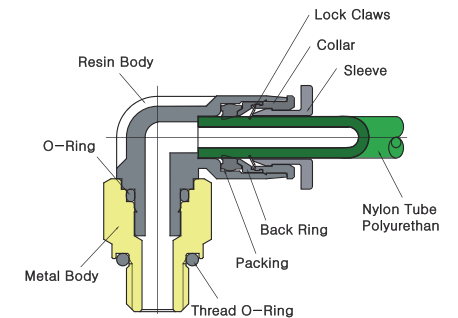
Metric Size			
Code	03	04	06
Tube Outer Diameter mm	Φ3	Φ4	Φ6

Product Code System

Structure Chart

PC-C 03 - M3C

① ② ③



③ Thread Type and Size

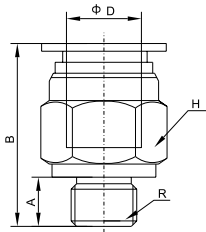
Inch Size				
Code	M3C	M5C	M6C	O1C
Thread	M3x0.5	M5x0.8	M6x1.0	R1/8

Compact One Touch Fittings

Compact One Touch Fittings

PC-C

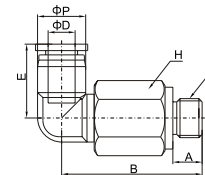
Male Straight



Model	ΦD	R	A	B	H
PC03-M3C	3	M3*0.5	3	15	5.5
PC03-M5C		M5*0.8	3.5	15.6	8
PC03-M6C		M6*1	3.9	15.9	8
PC04-M3C	4	M3*0.5	3	17	5.5
PC04-M5C		M5*0.8	3.5	17	8
PC04-M6C		M6*1	3.9	17.4	8
PC06-M5C	6	M5*0.8	3.5	17.6	8
PC06-M6C		M6*1	3.9	18	8
PC06-01C		R1/8	7	20	10

PLL-C

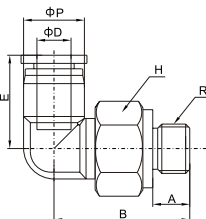
Extended Male Elbow



Model	ΦD	R	A	ΦP	E	B	H
PLL03-M3C	3	M3*0.5	3	6.2	11.1	22.4	5.5
PLL03-M5C		M5*0.8	3.5	6.2	11.1	21.7	8
PLL03-M6C		M6*1	3.9	6.2	11.1	27.8	8
PLL04-M3C	4	M3*0.5	3	8.1	15.9	28.4	5.5
PLL04-M5C		M5*0.8	3.5	8.1	15.9	27.2	8
PLL04-M6C		M6*1	3.9	8.1	15.9	27.6	8
PLL06-M5C	6	M5*0.8	3.5	10.7	16.4	28.2	8
PLL06-M6C		M6*1	3.9	10.7	16.4	34.3	8
PLL06-01C		R1/8	7	10.7	16.4	38.8	10

PL-C

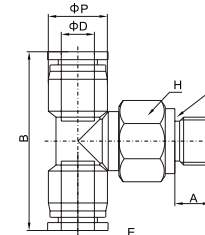
Male Elbow



Model	ΦD	R	A	ΦP	E	B	H
PL03-M3C	3	M3*0.5	3	6.2	11.1	15	5.5
PL03-M5C		M5*0.8	3.5	6.2	11.1	15.6	8
PL03-M6C		M6*1	3.9	6.2	11.1	15.9	8
PL04-M3C	4	M3*0.5	3	8.1	15.9	17	5.5
PL04-M5C		M5*0.8	3.5	8.1	15.9	17	8
PL04-M6C		M6*1	3.9	8.1	15.9	17.4	8
PL06-M5C	6	M5*0.8	3.5	10.7	16.4	17.6	8
PL06-M6C		M6*1	3.9	10.7	16.4	18	8
PL06-01C		R1/8	7	10.7	16.4	20	10

PB-C

Male Branch Tee



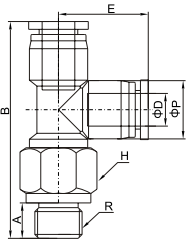
Model	ΦD	E	B	ΦP	A	R	H
PB03-M3C	3	12.4	22.8	6.2	3	M3*0.5	5.5
PB03-M5C		13.5	22.8	6.2	3.5	M5*0.8	8
PB03-M6C		15.5	22.8	6.2	3.9	M6*1	8
PB04-M3C	4	14.5	28.2	8.1	3	M3*0.5	5.5
PB04-M5C		15	28.2	8.1	3.5	M5*0.8	8
PB04-M6C		15.5	28.2	8.1	3.9	M6*1	8
PB06-M5C	6	15.5	32.2	10.7	3.5	M5*0.8	8
PB06-M6C		16.5	32.2	10.7	3.9	M6*1	8
PB06-01C		17.4	32.2	10.7	7	R1/8	10

Compact One Touch Fittings

Compact One Touch Fittings

PD-C

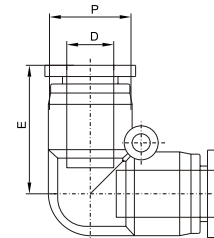
Run Tee



Model	ΦD	E	B	ΦP	A	R	H
PD03-M3C	3	11.4	22.6	6.2	3	M3*0.5	5.5
PD03-M5C		11.4	24.7	6.2	3.5	M5*0.8	8
PD03-M6C		11.4	26.7	6.2	3.9	M6*1	8
PD04-M3C	4	14.1	28.1	8.1	3	M3*0.5	5.5
PD04-M5C		14.1	28.6	8.1	3.5	M5*0.8	8
PD04-M6C		14.1	29	8.1	3.9	M6*1	8
PD06-M5C	6	16.1	30.8	10.7	3.5	M5*0.8	8
PD06-M6C		16.1	31.5	10.7	3.9	M6*1	8
PD06-01C		16.1	32.4	10.7	7	R1/8	10

PV-C

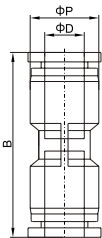
Union Elbow



Model	ΦD	B	ΦP
PV3C	3	11.6	6.2
PV4C	4	15.5	8.1
PV6C	6	18.4	10.7

PU-C

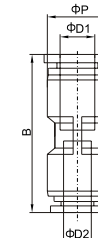
Union Straight



Model	ΦD	B	ΦP
PU3C	3	19.8	6.2
PU4C	4	25	8.1
PU6C	6	25.6	10.7

PG-C

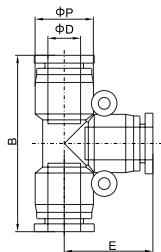
Union Straight Reducer



Model	ΦD1	ΦD2	B	ΦP
PG04-3	4	3	24.5	8.1
PG06-4	6	4	25.5	10.7

Compact One Touch Fittings

PE-C



Union Tee

Model	ΦD	B	ΦP	E
PE3C	3	22.8	6.2	11.4
PE4C	4	28.2	8.1	14.1
PE6C	6	32.2	10.7	16.1



Brass Push in Fittings

Brass Push in Fittings

Brass Push in Fittings

Characteristics

1. Brass push in fittings are highly resistant to spatters and higher temperatures.

Specification

Fluid	Air, Vacuum	
Pressure Range	0~2.0MPa	290PSI
Max Pressure	2.5MPa	360PSI
Temperature Range	-20~120°C	-4~248°F
Applicable Tube	PU (Polyurethane)	PA(Nylon)

Product Code System

BPC 08 - 01

① ② ③

① Type

② Tube Outer Diameter

	Metric Size					
Code	04	06	08	10	12	16
Tube Outer Diameter mm	Φ4	Φ6	Φ8	Φ10	Φ12	Φ16

Inch Size						
1/8	5/32	3/16	1/4	5/16	3/8	1/2
Φ1/8	Φ5/32	Φ3/16	Φ1/4	Φ5/16	Φ3/8	Φ1/2

③ Thread Type and Size

55° Taper Pipe Thread					
Code	01	02	03	04	06
Thread	R1/8	R1/4	R3/8	R1/2	R3/4

Metric Size				
Code	M5	M6	M8	M10
Thread	M5x0.8	M6x1	M8x1	M10x1
M12	M12A	M14	M16	M20
M12x1.25	M12Ax1.5	M14x1.5	M16x1.5	M20x1.5

	UNF	American Standard Taper Pipe Thread(NPT)				
Code	U10	N01	N02	N02	N04	N06
Thread	10-32UNF	NPT1/8	NPT1/4	NPT3/8	NPT1/2	NPT3/4

Brass Push in Fittings

Brass Push in Fittings

BPC



Male Straight

Tube(metric)-Thread(R)		Tube(inch)-Thread(R)		Tube(inch)-Thread(NPT)	
BPC04-M5	BPC8-03	BPC1/8-01	BPC5/16-03	BPC1/8-U10	BPC1/4-N02
BPC04-M6	BPC8-04	BPC1/8-02	BPC5/16-04	BPC1/8-N01	BPC1/4-N03
BPC04-01	BPC10-01	BPC5/32-01	BPC3/8-01	BPC1/8-N02	BPC5/16-N01
BPC04-02	BPC10-02	BPC5/32-02	BPC3/8-02	BPC5/32-U10	BPC5/16-N02
BPC04-03	BPC10-03	BPC3/16-01	BPC3/8-03	BPC5/32-N01	BPC5/16-N03
BPC06-M5	BPC10-04	BPC3/16-02	BPC3/8-04	BPC5/32-N02	BPC3/8-N01
BPC06-M6	BPC12-01	BPC3/16-03	BPC1/2-02	BPC3/16-U10	BPC3/8-N02
BPC06-01	BPC12-02	BPC1/4-01	BPC1/2-03	BPC3/16-N01	BPC3/8-N03
BPC06-02	BPC12-03	BPC1/4-02	BPC1/2-04	BPC3/16-N02	BPC3/8-N04
BPC06-03	BPC12-04	BPC1/4-03		BPC3/16-N03	BPC1/2-N02
BPC08-01	BPC16-03	BPC5/16-01		BPC1/4-U10	BPC1/2-N03
BPC08-02	BPC16-04	BPC5/16-02		BPC1/4-N01	BPC1/2-N04

BPB



Branch Tee

Tube(metric)-Thread(R)		Tube(inch)-Thread(R)		Tube(inch)-Thread(NPT)	
BPB04-M5	BPB8-03	BPB1/8-01	BPB5/16-03	BPB1/8-U10	BPB1/4-N02
BPB04-M6	BPB8-04	BPB1/8-02	BPB5/16-04	BPB1/8-N01	BPB1/4-N03
BPB04-01	BPB10-01	BPB5/32-01	BPB3/8-01	BPB1/8-N02	BPB5/16-N01
BPB04-02	BPB10-02	BPB5/32-02	BPB3/8-02	BPB5/32-U10	BPB5/16-N02
BPB04-03	BPB10-03	BPB3/16-01	BPB3/8-03	BPB5/32-N01	BPB5/16-N03
BPB06-M5	BPB10-04	BPB3/16-02	BPB3/8-04	BPB5/32-N02	BPB3/8-N01
BPB06-M6	BPB12-01	BPB3/16-03	BPB1/2-02	BPB3/16-U10	BPB3/8-N02
BPB06-01	BPB12-02	BPB1/4-01	BPB1/2-03	BPB3/16-N01	BPB3/8-N03
BPB06-02	BPB12-03	BPB1/4-02	BPB1/2-04	BPB3/16-N02	BPB3/8-N04
BPB06-03	BPB12-04	BPB1/4-03		BPB3/16-N03	BPB1/2-N02
BPB08-01	BPB16-03	BPB5/16-01		BPB1/4-U10	BPB1/2-N03
BPB08-02	BPB16-04	BPB5/16-02		BPB1/4-N01	BPB1/2-N04

Brass Push in Fittings

Brass Push in Fittings

BPL



Male Elbow

Tube(metric)-Thread(R)		Tube(inch)-Thread(R)		Tube(inch)-Thread(NPT)	
BPL04-M5	BPL8-03	BPL1/8-01	BPL5/16-03	BPL1/8-U10	BPL1/4-N02
BPL04-M6	BPL8-04	BPL1/8-02	BPL5/16-04	BPL1/8-N01	BPL1/4-N03
BPL04-01	BPL10-01	BPL5/32-01	BPL3/8-01	BPL1/8-N02	BPL5/16-N01
BPL04-02	BPL10-02	BPL5/32-02	BPL3/8-02	BPL5/32-U10	BPL5/16-N02
BPL04-03	BPL10-03	BPL3/16-01	BPL3/8-03	BPL5/32-N01	BPL5/16-N03
BPL06-M5	BPL10-04	BPL3/16-02	BPL3/8-04	BPL5/32-N02	BPL3/8-N01
BPL06-M6	BPL12-01	BPL3/16-03	BPL1/2-02	BPL3/16-U10	BPL3/8-N02
BPL06-01	BPL12-02	BPL1/4-01	BPL1/2-03	BPL3/16-N01	BPL3/8-N03
BPL06-02	BPL12-03	BPL1/4-02	BPL1/2-04	BPL3/16-N02	BPL3/8-N04
BPL06-03	BPL12-04	BPL1/4-03		BPL3/16-N03	BPL1/2-N02
BPL08-01	BPL16-03	BPL5/16-01		BPL1/4-U10	BPL1/2-N03
BPL08-02	BPL16-04	BPL5/16-02		BPL1/4-N01	BPL1/2-N04

BPV



Union Elbow

Tube(metric)	Tube(inch)
BPV 04	BPV 5/32
BPV 06	BPV 3/16
BPV 08	BPV 1/4
BPV 10	BPV 5/16
BPV 12	BPV 3/8
BPV 14	BPV 1/2

BPU



Union Straight

Tube(metric)	Tube(inch)
BPU 04	BPV 5/32
BPU 06	BPV 3/16
BPU 08	BPV 1/4
BPU 10	BPV 5/16
BPU 12	BPV 3/8
BPU 14	BPV 1/2

BPY



Union Y

Tube(metric)	Tube(inch)
BPY 04	BPY 5/32
BPY 06	BPY 3/16
BPY 08	BPY 1/4
BPY 10	BPY 5/16
BPY 12	BPY 3/8
BPY 14	BPY 1/2

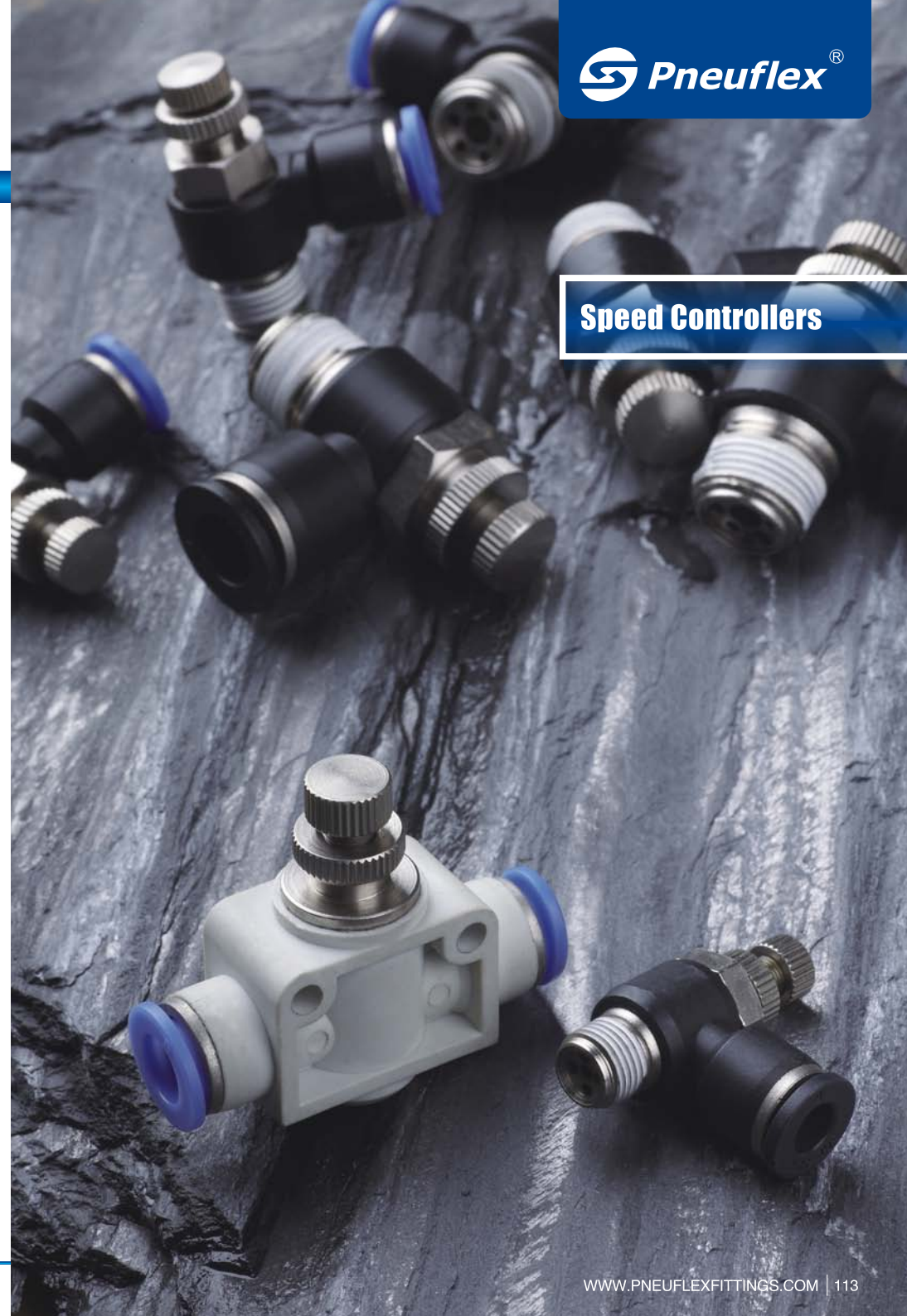
Brass Push in Fittings

BPE



Union Tee

Tube(metric)	Tube(inch)
BPE 04	BPE 5/32
BPE 06	BPE 3/16
BPE 08	BPE 1/4
BPE 10	BPE 5/16
BPE 12	BPE 3/8
BPE 14	BPE 1/2



Speed Controllers

Speed Controllers

Specification	
Fluid	Air, Vacuum
Pressure Range	0~1.0MPa 150PSI
Max Pressure	1.5MPa 250PSI
Temperature Range	0~60°C 32~140°F
Applicable Tube	PU (Polyurethane) PA(Nylon)

- ① Type
- ② Tube Outer Diameter

	Metric Tube					
Code	04	06	08	10	12	16
Tube Outer Diameter mm	Φ4	Φ6	Φ8	Φ10	Φ12	Φ16

- ③ Thread Type and Size

55° Taper Pipe Thread					
Code	01	02	03	04	06
Thread	R1/8	R1/4	R3/8	R1/2	R3/4

55° G-Thread				
Code	G01	G02	G03	G04
Thread	G1/8	G1/4	G3/8	G1/2

Metric Size				
Code	M5	M6	M8	M10
Thread	M5x0.8	M6x1	M8x1	M10x1

Speed Controllers

Characteristics

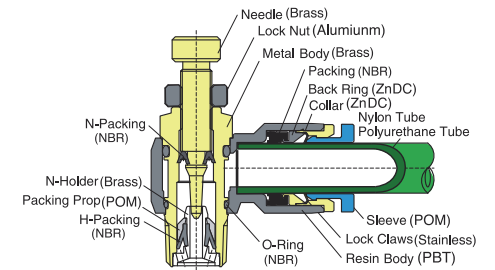
- Speed Controllers precisely permit the optimal rate of airflow for the smooth cylinder movement of a driving device.
- Unidirectional airflow is available for either exhaust or inlet flow control methods.

Product Code System

JSC 08 - 01

- ①
- ②
- ③

Structure Chart



Inch Tube					
5/32	3/16	1/4	5/16	3/8	1/2
Φ5/32	Φ3/16	Φ1/4	Φ5/16	Φ3/8	Φ1/2

	UNF	American Standard Taper Pipe Thread(NPT)				
Code	U10	N01	N02	N02	N04	N06
Thread	10-32UNF	NPT1/8	NPT1/4	NPT3/8	NPT1/2	NPT3/4

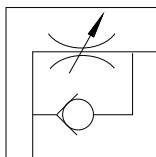
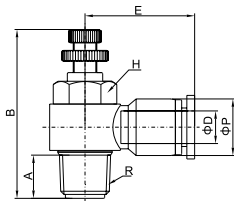
Metric Size				
M12	M12A	M14	M16	M20
M12x1.25	M12Ax1.5	M14x1.5	M16x1.5	M20x1.5

Speed Controllers

Speed Controllers

JSC

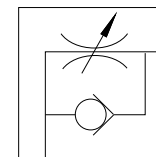
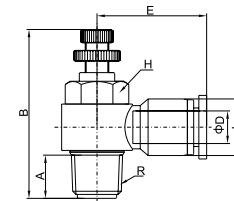
Control-in



Model	ΦD	E	B	ΦP	A	G	H
JSC04-M5B	4	20	28	11	3.8	M5	8
JSC04-01B		22.3	37	11	7.5	R1/8	12
JSC04-02B		24.1	44.5	11	11	R1/4	14
JSC06-M5B	6	21.9	28	13.4	3.5	M5	8
JSC06-01B		23.1	37	13.4	7.5	R1/8	12
JSC06-02B		25	44.5	13.4	11	R1/4	14
JSC06-03B		26.9	48	13.4	12	R3/8	19
JSC06-04B		29.8	52.5	13	13	R1/2	24
JSC08-01B	8	25.6	37	15	7.5	R1/8	12
JSC08-02B		28.5	44.5	15	11	R1/4	14
JSC08-03B		29.6	48	15	12	R3/8	19
JSC08-04B		32.5	52.5	15	13	R1/2	24
JSC10-01B	10	30.1	37	18.8	7.5	R1/8	12
JSC10-02B		32.3	44.5	18.8	11	R1/4	14
JSC10-03B		32.9	48	18.8	12	R3/8	19
JSC10-04B		35.8	52.5	18.8	13	R1/2	24
JSC12-02B	12	33.5	44.5	21	11	R1/4	14
JSC12-03B		35.6	48	21	12	R3/8	19
JSC12-04B		36.5	52.5	21	13	R1/2	24

JSC

Control-out



Model	ΦD	E	B	ΦP	A	G	H
JSC04-M5	4	20	28	11	3.8	M5	8
JSC04-01		22.3	37	11	7.5	R1/8	12
JSC04-02		24.1	44.5	11	11	R1/4	14
JSC06-M5	6	21.9	28	13.4	3.5	M5	8
JSC06-01		23.1	37	13.4	7.5	R1/8	12
JSC06-02		25	44.5	13.4	11	R1/4	14
JSC06-03		26.9	48	13.4	12	R3/8	19
JSC06-04		29.8	52.5	13	13	R1/2	24
JSC08-01	8	25.6	37	15	7.5	R1/8	12
JSC08-02		28.5	44.5	15	11	R1/4	14
JSC08-03		29.6	48	15	12	R3/8	19
JSC08-04		32.5	52.5	15	13	R1/2	24
JSC10-01	10	30.1	37	18.8	7.5	R1/8	12
JSC10-02		32.3	44.5	18.8	11	R1/4	14
JSC10-03		32.9	48	18.8	12	R3/8	19
JSC10-04		35.8	52.5	18.8	13	R1/2	24
JSC12-02	12	33.5	44.5	21	11	R1/4	14
JSC12-03		35.6	48	21	12	R3/8	19
JSC12-04		36.5	52.5	21	13	R1/2	24

Speed Controllers

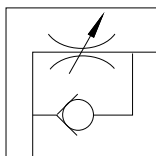
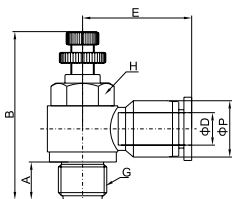
Speed Controllers

JSC-G



Control-in

Model	ΦD	E	B	ΦP	A	G	H
JSC04-G01B	4	22.3	37	11	7.5	G1/8	12
JSC04-G02B		24.1	44.5	11	11	G1/4	14
JSC06-G01B	6	23.1	37	13.4	7.5	G1/8	12
JSC06-G02B		25	44.5	13.4	11	G1/4	14
JSC06-G03B		26.9	48	13.4	12	G3/8	19
JSC06-G04B		29.8	52.5	13	13	G1/2	24
JSC08-G01B	8	25.6	37	15	7.5	G1/8	12
JSC08-G02B		28.5	44.5	15	11	G1/4	14
JSC08-G03B		29.6	48	15	12	G3/8	19
JSC08-G04B		32.5	52.5	15	13	G1/2	24
JSC10-G01B	10	30.1	37	18.8	7.5	G1/8	12
JSC10-G02B		32.3	44.5	18.8	11	G1/4	14
JSC10-G03B		32.9	48	18.8	12	G3/8	19
JSC10-G04B		35.8	52.5	18.8	13	G1/2	24
JSC12-G02B	12	33.5	44.5	21	11	G1/4	14
JSC12-G03B		35.6	48	21	12	G3/8	19
JSC12-G04B		36.5	52.5	21	13	G1/2	24

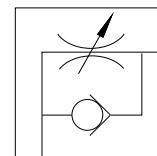
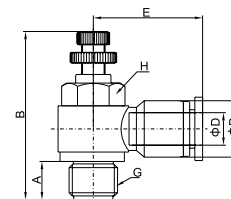


JSC-G



Control-out

Model	ΦD	E	B	ΦP	A	G	H
JSC04-G01	4	22.3	37	11	7.5	G1/8	12
JSC04-G02		24.1	44.5	11	11	G1/4	14
JSC06-G01	6	23.1	37	13.4	7.5	G1/8	12
JSC06-G02		25	44.5	13.4	11	G1/4	14
JSC06-G03		26.9	48	13.4	12	G3/8	19
JSC06-G04		29.8	52.5	13	13	G1/2	24
JSC08-G01	8	25.6	37	15	7.5	G1/8	12
JSC08-G02		28.5	44.5	15	11	G1/4	14
JSC08-G03		29.6	48	15	12	G3/8	19
JSC08-G04		32.5	52.5	15	13	G1/2	24
JSC10-G01	10	30.1	37	18.8	7.5	G1/8	12
JSC10-G02		32.3	44.5	18.8	11	G1/4	14
JSC10-G03		32.9	48	18.8	12	G3/8	19
JSC10-G04		35.8	52.5	18.8	13	G1/2	24
JSC12-G02	12	33.5	44.5	21	11	G1/4	14
JSC12-G03		35.6	48	21	12	G3/8	19
JSC12-G04		36.5	52.5	21	13	G1/2	24

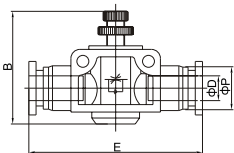


PA

Union Straight



Model	ΦD	E	B	ΦP
PA04	4	39.5	25.7	11
PA06	6	47.6	41.8	13.4
PA08	8	52.5	45.6	14.8
PA10	10	63.2	52.2	18.8
PA12	12	74.1	55	21



Hand Valves

Hand Valves

Hand Valves

Specification		
Fluid	Air, Vacuum	
Pressure Range	0~1.0MPa	150PSI
Max Pressure	1.5MPa	250PSI
Temperature Range	0~60°C	32~140°F
Applicable Tube	PU (Polyurethane)	PA(Nylon)

- ① Type
- ② Tube Outer Diameter

	Metric Tube					
Code	04	06	08	10	12	16
Tube Outer Diameter mm	Φ4	Φ6	Φ8	Φ10	Φ12	Φ16

- ③ Thread Type and Size

55° Taper Pipe Thread					
Code	01	02	03	04	06
Thread	R1/8	R1/4	R3/8	R1/2	R3/4

55° G-Thread				
Code	G01	G02	G03	G04
Thread	G1/8	G1/4	G3/8	G1/2

Metric Size				
Code	M5	M6	M8	M10
Thread	M5x0.8	M6x1	M8x1	M10x1

Characteristics

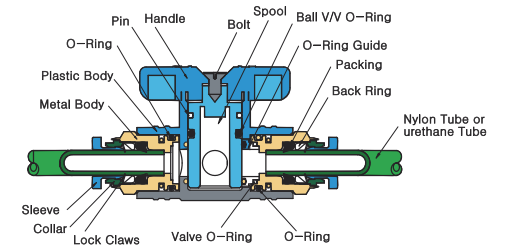
1.To control the air flow switch.

Product Code System

HVFS 06 - 01

① ② ③

Structure Chart



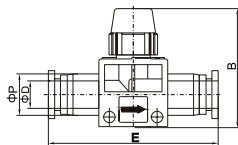
Inch Tube					
5/32	3/16	1/4	5/16	3/8	1/2
Φ5/32	Φ3/16	Φ1/4	Φ5/16	Φ3/8	Φ1/2

	UNF	American Standard Taper Pipe Thread(NPT)				
Code	U10	N01	N02	N02	N04	N06
Thread	10-32UNF	NPT1/8	NPT1/4	NPT3/8	NPT1/2	NPT3/4

Metric Size				
M12	M12A	M14	M16	M20
M12x1.25	M12Ax1.5	M14x1.5	M16x1.5	M20x1.5

Hand Valves

HVFF

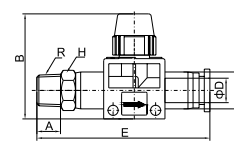


Hand Valves

Model		ΦD	E	B	ΦP
Two Ways	Three Ways				
HVFF06-06B	HVFF06-06	6	51.6	41.5	14.8
HVFF08-06B	HVFF08-06	8	52.1	41.5	14.8
HVFF08-08B	HVFF08-08	8	52.6	41.5	14.8
HVFF10-10B	HVFF10-10	10	64.2	46	21
HVFF12-10B	HVFF12-10	12	64.4	46	21
HVFF12-12B	HVFF12-12	12	64.7	46	21

Hand Valves

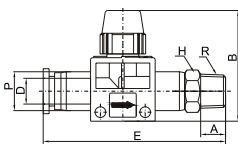
HVSF



Hand Valves

Model		ΦD	E	B	ΦP	A	R	H
Two Ways	Three Ways							
HVSF01-06B	HVSF01-06	6	58.2	41.5	14.8	7	R1/8	12
HVSF02-06B	HVSF02-06	6	60.8	41.5	14.8	9.5	R1/4	14
HVSF03-06B	HVSF03-06	6	62.2	41.5	14.8	10	R3/8	17
HVSF01-08B	HVSF01-08	8	59.2	41.5	14.8	7	R1/8	14
HVSF02-08B	HVSF02-08	8	61.2	41.5	14.8	9.5	R1/4	14
HVSF03-08B	HVSF03-08	8	62.8	41.5	14.8	10	R3/8	17
HVSF02-10B	HVSF02-10	10	72.8	46	21	9.5	R1/4	17
HVSF03-10B	HVSF03-10	10	73.8	46	21	10	R3/8	17
HVSF04-10B	HVSF04-10	10	77.2	46	21	13	R1/2	21
HVSF02-12B	HVSF02-12	12	73.6	46	21	9.5	R1/4	21
HVSF03-12B	HVSF03-12	12	74.5	46	21	10	R3/8	21
HVSF04-12B	HVSF04-12	12	77.5	46	21	13	R1/2	21

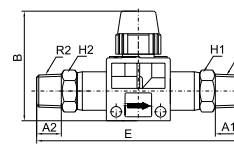
HVFS



Hand Valves

Model		ΦD	E	B	ΦP	A	R	H
Two Ways	Three Ways							
HVFS01-06B	HVFS01-06	6	58.2	41.5	14.8	7	R1/8	12
HVFS02-06B	HVFS02-06	6	60.8	41.5	14.8	9.5	R1/4	14
HVFS03-06B	HVFS03-06	6	62.2	41.5	14.8	10	R3/8	17
HVFS01-08B	HVFS01-08	8	59.2	41.5	14.8	7	R1/8	14
HVFS02-08B	HVFS02-08	8	61.2	41.5	14.8	9.5	R1/4	14
HVFS03-08B	HVFS03-08	8	62.8	41.5	14.8	10	R3/8	17
HVFS02-10B	HVFS02-10	10	72.8	46	21	9.5	R1/4	17
HVFS03-10B	HVFS03-10	10	73.8	46	21	10	R3/8	17
HVFS04-10B	HVFS04-10	10	77.2	46	21	13	R1/2	21
HVFS02-12B	HVFS02-12	12	73.6	46	21	9.5	R1/4	21
HVFS03-12B	HVFS03-12	12	74.5	46	21	10	R3/8	21
HVFS04-12B	HVFS04-12	12	77.5	46	21	13	R1/2	21

HVSS

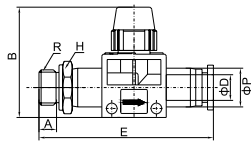


Hand Valves

Model		E	B	R1	R2	A1	A2	H1	H2
Two Ways	Three Ways								
HVSS01-01B	HVSS01-01	65	41.5	R1/8	R1/8	7	7	14	14
HVSS02-01B	HVSS02-01	68	41.5	R1/4	R1/8	9.5	7	17	14
HVSS02-02B	HVSS02-02	67.1	41.5	R1/4	R1/4	9.5	9.5	17	17
HVSS03-02B	HVSS03-02	82.5	46	R3/8	R1/4	10	9.5	17	17
HVSS03-03B	HVSS03-03	83.5	46	R3/8	R3/8	10	10	17	17
HVSS04-03B	HVSS04-03	90.5	46	R1/2	R3/8	13	10	21	17
HVSS04-04B	HVSS04-04	94.5	46	R1/2	R1/2	13	13	21	21

Hand Valves

HVFS-G

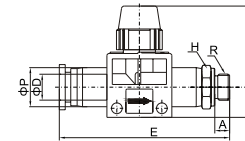


Hand Valves

Model		ΦD	E	B	ΦP	A	R	H
Two Ways	Three Ways							
HVFS G01-06B	HVFS G01-06	6	56.2	41.5	14.8	5.5	G1/8	14
HVFS G02-06B	HVFS G02-06	6	58.8	41.5	14.8	7.5	G1/4	17
HVFS G03-06B	HVFS G03-06	6	61	41.5	14.8	8.5	G3/8	20
HVFS G01-08B	HVFS G01-08	8	57.2	41.5	14.8	5.5	G1/8	14
HVFS G02-08B	HVFS G02-08	8	59.2	41.5	14.8	7.5	G1/4	17
HVFS G03-08B	HVFS G03-08	8	61.5	41.5	14.8	8.5	G3/8	20
HVFS G02-10B	HVFS G02-10	10	71.3	46	21	7.5	G1/4	17
HVFS G03-10B	HVFS G03-10	10	72.2	46	21	8.5	G3/8	20
HVFS G04-10B	HVFS G04-10	10	75.2	46	21	11	G1/2	24
HVFS G02-12B	HVFS G02-12	12	71.6	46	21	7.5	G1/4	17
HVFS G03-12B	HVFS G03-12	12	72.5	46	21	8.5	G3/8	20
HVFS G04-12B	HVFS G04-12	12	75.5	46	21	11	G1/2	24

Hand Valves

HVSF-G

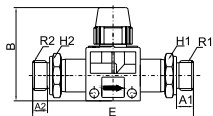


Hand Valves

Model		ΦD	E	B	ΦP	A	R	H
Two Ways	Three Ways							
HVSF G01-06B	HVSF G01-06	6	56.2	41.5	14.8	5.5	G1/8	14
HVSF G02-06B	HVSF G02-06	6	58.8	41.5	14.8	7.5	G1/4	17
HVSF G03-06B	HVSF G03-06	6	61	41.5	14.8	8.5	G3/8	20
HVSF G01-08B	HVSF G01-08	8	57.2	41.5	14.8	5.5	G1/8	14
HVSF G02-08B	HVSF G02-08	8	59.2	41.5	14.8	7.5	G1/4	17
HVSF G03-08B	HVSF G03-08	8	61.5	41.5	14.8	8.5	G3/8	20
HVSF G02-10B	HVSF G02-10	10	71.3	46	21	7.5	G1/4	17
HVSF G03-10B	HVSF G03-10	10	72.2	46	21	8.5	G3/8	20
HVSF G04-10B	HVSF G04-10	10	75.2	46	21	11	G1/2	24
HVSF G02-12B	HVSF G02-12	12	71.6	46	21	7.5	G1/4	17
HVSF G03-12B	HVSF G03-12	12	72.5	46	21	8.5	G3/8	20
HVSF G04-12B	HVSF G04-12	12	75.5	46	21	11	G1/2	24

Hand Valves

HVSS-G



Hand Valves

Model		E	B	R1	R2	A1	A2	H1	H2
Two Ways	Three Ways								
HVSS G01-01B	HVSS G01-01	60	41.5	G1/8	G1/8	5.5	5.5	14	14
HVSS G02-01B	HVSS G02-01	64	41.5	G1/4	G1/8	7.5	5.5	17	14
HVSS G02-02B	HVSS G02-02	63	41.5	G1/4	G1/4	7.5	7.5	17	17
HVSS G03-02B	HVSS G03-02	80	46	G3/8	G1/4	8.5	7.5	20	17
HVSS G03-03B	HVSS G03-03	81	46	G3/8	G3/8	8.5	8.5	20	20
HVSS G04-03B	HVSS G04-03	87	46	G1/2	G3/8	11	8.5	24	20
HVSS G04-04B	HVSS G04-04	90	46	G1/2	G1/2	11	11	24	24

Silencers



Silencers

Specification		
Fluid	Air, Vacuum	
Pressure Range	0~1.0MPa	150PSI
Max Pressure	1.5MPa	250PSI
Temperature Range	0~60°C	32~140°F
Applicable Tube	PU (Polyurethane)	PA(Nylon)

③ Thread Type and Size

55° R(PT,BSPT) Taper Pipe Thread									
Code	01	02	03	04	06	08	10	12	16
Thread	R1/8	R1/4	R3/8	R1/2	R3/4	R1	R11/4	R11/2	R2

55° G(BSPP) Thread								
Code	G01	G02	G03	G04	G08	G10	G12	G16
Thread	G1/8	G1/4	G3/8	G1/2	G1	G11/4	G11/2	G2

UNF	NPT 60° American Standard Taper Pipe Thread									
Code	U10	N01	N02	N02	N04	N06	N08	N10	N12	N16
Thread	10-32UNF	NPT1/8	NPT1/4	NPT3/8	NPT1/2	NPT3/4	NPT1	NPT11/4	NPT11/2	NPT2

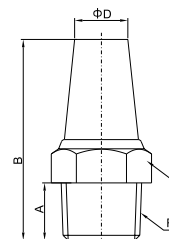
Metric Size				
Code	M5	M6	M8	M10
Thread	M5x0.8	M6x1	M8x1	M10x1
M12	M12A	M14	M16	M20
M12x1.25	M12Ax1.5	M14x1.5	M16x1.5	M20x1.5

Silencers

BSL

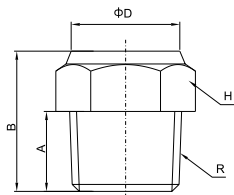


THREAD (R, PT, BSPT)	THREAD (NPT)	THREAD (G, BSPP)
BSL-M5	BSL-U10	BSL-G01
BSL-01	BSL-N01	BSL-G02
BSL-02	BSL-N02	BSL-G03
BSL-03	BSL-N03	BSL-G04
BSL-04	BSL-N04	BSL-G06
BSL-06	BSL-N06	BSL-G08
BSL-08	BSL-N08	BSL-G10
BSL-10	BSL-N10	BSL-G12
BSL-12	BSL-N12	BSL-G16
BSL-16	BSL-N16	



Silencers

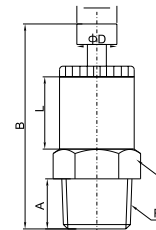
BSLM



THREAD (R, PT, BSPT)	THREAD (NPT)	THREAD (G, BSPP)
BSLM-M5	BSLM-U10	BSLM-G01
BSLM-01	BSLM-N01	BSLM-G02
BSLM-02	BSLM-N02	BSLM-G03
BSLM-03	BSLM-N03	BSLM-G04
BSLM-04	BSLM-N04	BSLM-G06
BSLM-06	BSLM-N06	BSLM-G08
BSLM-08	BSLM-N08	BSLM-G10
BSLM-10	BSLM-N10	BSLM-G12
BSLM-12	BSLM-N12	BSLM-G16
BSLM-16	BSLM-N16	

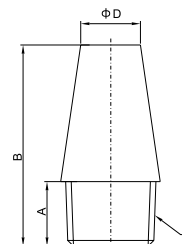
Silencers

BESL



THREAD (R, PT, BSPT)	THREAD (NPT)	THREAD (G, BSPP)
BESL-M5	BESL-U10	BESL-G01
BESL-01	BESL-N01	BESL-G02
BESL-02	BESL-N02	BESL-G03
BESL-03	BESL-N03	BESL-G04
BESL-04	BESL-N04	BESL-G06
BESL-06	BESL-N06	BESL-G08
BESL-08	BESL-N08	BESL-G10
BESL-10	BESL-N10	BESL-G12
BESL-12	BESL-N12	BESL-G16
BESL-16	BESL-N16	

BSLD



THREAD (R, PT, BSPT)	THREAD (NPT)	THREAD (G, BSPP)
BSLD-M5	BSLD-U10	BSLD-G01
BSLD-01	BSLD-N01	BSLD-G02
BSLD-02	BSLD-N02	BSLD-G03
BSLD-03	BSLD-N03	BSLD-G04
BSLD-04	BSLD-N04	BSLD-G06
BSLD-06	BSLD-N06	BSLD-G08
BSLD-08	BSLD-N08	BSLD-G10
BSLD-10	BSLD-N10	BSLD-G12
BSLD-12	BSLD-N12	BSLD-G16
BSLD-16	BSLD-N16	

Silencers

BESLC



THREAD (R, PT, BSPT)	THREAD (NPT)	THREAD (G, BSPP)
BESLC-M5	BESLC-U10	BESLC-G01
BESLC-01	BESLC-N01	BESLC-G02
BESLC-02	BESLC-N02	BESLC-G03
BESLC-03	BESLC-N03	BESLC-G04
BESLC-04	BESLC-N04	BESLC-G06
BESLC-06	BESLC-N06	BESLC-G08
BESLC-08	BESLC-N08	BESLC-G10
BESLC-10	BESLC-N10	BESLC-G12
BESLC-12	BESLC-N12	BESLC-G16
BESLC-16	BESLC-N16	

BESLD



THREAD (R, PT, BSPT)	THREAD (NPT)	THREAD (G, BSPP)
BESLD-M5	BESLD-U10	BESLD-G01
BESLD-01	BESLD-N01	BESLD-G02
BESLD-02	BESLD-N02	BESLD-G03
BESLD-03	BESLD-N03	BESLD-G04
BESLD-04	BESLD-N04	BESLD-G06
BESLD-06	BESLD-N06	BESLD-G08
BESLD-08	BESLD-N08	BESLD-G10
BESLD-10	BESLD-N10	BESLD-G12
BESLD-12	BESLD-N12	BESLD-G16
BESLD-16	BESLD-N16	

Silencers

PSL



THREAD (R, PT, BSPT)	THREAD (NPT)	THREAD (G, BSPP)
PSL-M5	PSL-U10	PSL-G01
PSL-01	PSL-N01	PSL-G02
PSL-02	PSL-N02	PSL-G03
PSL-03	PSL-N03	PSL-G04
PSL-04	PSL-N04	PSL-G06
PSL-06	PSL-N06	PSL-G08
PSL-08	PSL-N08	PSL-G10
PSL-10	PSL-N10	PSL-G12
PSL-12	PSL-N12	PSL-G16
PSL-16	PSL-N16	

PSU



THREAD (R, PT, BSPT)	THREAD (NPT)	THREAD (G, BSPP)
PSU-M5	PSU-U10	PSU-G01
PSU-01	PSU-N01	PSU-G02
PSU-02	PSU-N02	PSU-G03
PSU-03	PSU-N03	PSU-G04
PSU-04	PSU-N04	PSU-G06
PSU-06	PSU-N06	PSU-G08
PSU-08	PSU-N08	PSU-G10
PSU-10	PSU-N10	PSU-G12
PSU-12	PSU-N12	PSU-G16
PSU-16	PSU-N16	

Silencers

PSE



THREAD (R, PT, BSPT)	THREAD (NPT)	THREAD (G, BSPP)
PSE-M5	PSE-U10	PSE-G01
PSE-01	PSE-N01	PSE-G02
PSE-02	PSE-N02	PSE-G03
PSE-03	PSE-N03	PSE-G04
PSE-04	PSE-N04	PSE-G06
PSE-06	PSE-N06	PSE-G08
PSE-08	PSE-N08	PSE-G10
PSE-10	PSE-N10	PSE-G12
PSE-12	PSE-N12	PSE-G16
PSE-16	PSE-N16	

SSL



THREAD (R, PT, BSPT)	THREAD (NPT)	THREAD (G, BSPP)
SSL-M5	SSL-U10	SSL-G01
SSL-01	SSL-N01	SSL-G02
SSL-02	SSL-N02	SSL-G03
SSL-03	SSL-N03	SSL-G04
SSL-04	SSL-N04	SSL-G06
SSL-06	SSL-N06	SSL-G08
SSL-08	SSL-N08	SSL-G10
SSL-10	SSL-N10	SSL-G12
SSL-12	SSL-N12	SSL-G16
SSL-16	SSL-N16	

Silencers

SSLM



THREAD (R, PT, BSPT)	THREAD (NPT)	THREAD (G, BSPP)
SSLM-M5	SSLM-U10	SSLM-G01
SSLM-01	SSLM-N01	SSLM-G02
SSLM-02	SSLM-N02	SSLM-G03
SSLM-03	SSLM-N03	SSLM-G04
SSLM-04	SSLM-N04	SSLM-G06
SSLM-06	SSLM-N06	SSLM-G08
SSLM-08	SSLM-N08	SSLM-G10
SSLM-10	SSLM-N10	SSLM-G12
SSLM-12	SSLM-N12	SSLM-G16
SSLM-16	SSLM-N16	

SSLV



THREAD (R, PT, BSPT)	THREAD (NPT)	THREAD (G, BSPP)
SSLV-M5	SSLV-U10	SSLV-G01
SSLV-01	SSLV-N01	SSLV-G02
SSLV-02	SSLV-N02	SSLV-G03
SSLV-03	SSLV-N03	SSLV-G04
SSLV-04	SSLV-N04	SSLV-G06
SSLV-06	SSLV-N06	SSLV-G08
SSLV-08	SSLV-N08	SSLV-G10
SSLV-10	SSLV-N10	SSLV-G12
SSLV-12	SSLV-N12	SSLV-G16
SSLV-16	SSLV-N16	

Silencers

BSLV



THREAD (R, PT, BSPT)	THREAD (NPT)	THREAD (G, BSPP)
BSLV-M5	BSLV-U10	BSLV-G01
BSLV-01	BSLV-N01	BSLV-G02
BSLV-02	BSLV-N02	BSLV-G03
BSLV-03	BSLV-N03	BSLV-G04
BSLV-04	BSLV-N04	BSLV-G06
BSLV-06	BSLV-N06	BSLV-G08
BSLV-08	BSLV-N08	BSLV-G10
BSLV-10	BSLV-N10	BSLV-G12
BSLV-12	BSLV-N12	BSLV-G16
BSLV-16	BSLV-N16	

Quick Couplers



Quick Couplers

Characteristics

- 1.Uni-directional shut-off coupler with an automatic shut off valve built in the socket.
- 2.Recommended for piping of compressed air connections.

Specification

Fluid	Air, Water, Oil
Pressure Range	0~1.0MPa
Negative Pressure	-100KPa(10Torr)
Max Pressure	1.5MPa
Temperature Range	0~60°C

Product Code System

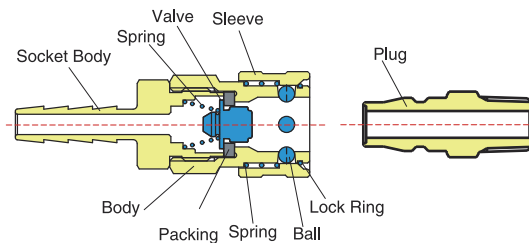
Structure Chart

PP 20

- ①
- ②

① Type

② Thread Type and Size



55° Taper Pipe Thread			
Code	20	30	40
Thread	R1/4	R3/8	R1/2

Quick Couplers

SM



Model	R
SM-20	R1/4
SM-30	R3/8
SM-40	R1/2

SH



Model	R
SH-20	R1/4
SH-30	R3/8
SH-40	R1/2

Quick Couplers

SF



Model	R
SF-20	R1/4
SF-30	R3/8
SF-40	R1/2

PM



Model	R
PM-20	R1/4
PM-30	R3/8
PM-40	R1/2

SP



Model	R
SP-20	R1/4
SP-30	R3/8
SP-40	R1/2

PH



Model	R
PH-20	R1/4
PH-30	R3/8
PH-40	R1/2

Quick Couplers

PF



Model	R
PF-20	R1/4
PF-30	R3/8
PF-40	R1/2

PP



Model	R
PP-20	R1/4
PP-30	R3/8
PP-40	R1/2



Tube\Tube Cutter\Air Blow Guns

POLYURETHANE TUBE



Characteristics

1. Excellent performance of resistance against high-pressure, vibration, corrosion, wear, weather and bending.
2. High precision of inside and outside dia sizes controllable, suitable for various kinds of fittings.
3. Multiple colors for your selection.

Specification

Material	Polyurethane
Fluid	Air, water
Burst Pressure	30 bar
Operation Pressure	10 bar
Operating Temperature	-20°C - +60°C

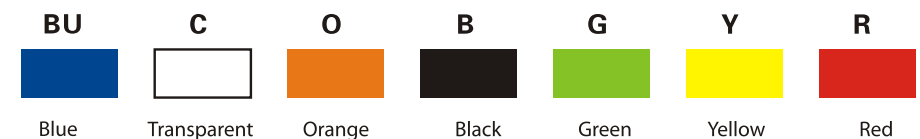
Metric Size:

ITEM NO .	O.D.	I.D.	Standard Length
PU3x2	3mm	2mm	200m
PU4x2.5	4mm	2.5mm	200m
PU6x4	6mm	4mm	200m
PU8x5	8mm	5mm	100m
PU8x5.5	8mm	5.5mm	100m
PU10x6.5	10mm	6.5mm	100m
PU12x8	12mm	8mm	100m
PU16x12	16mm	12mm	100m
Pu16x13	16mm	13mm	100m

Inch Size:

ITEM NO .	O.D.	I.D.	Standard Length
PU1/8	1/8	2mm	200m
PU5/32	5/32	2.5mm	200m
PU1/4	1/4	4.23mm	200m
PU5/16	5/16	5mm	100m
PU3/8	3/8	6.35mm	100m
PU1/2	1/2	8.46mm	100m

Color



PU COIL TUBE



Characteristics

1. Excellent performance of resistance against high-pressure, vibration, corrosion, wear, weather and bending.
2. High precision of inside and outside dia sizes controllable, suitable for various kinds of fittings.
3. Free extension and easy use.

Specification

Material	Polyurethane
Fluid	Air, water
Burst Pressure	30 bar
Operation Pressure	10 bar
Operating Temperature	-20°C - +60°C

Metric Size

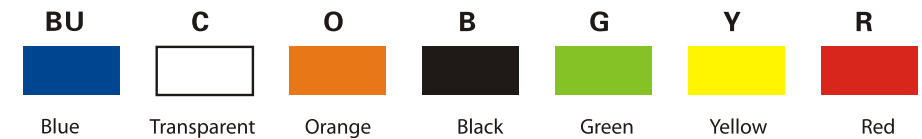
ITEM NO .	PUC6x4-2	PUC6x4-4	PUC6x4-6	PUC6x4-8	PUC6x4-10	PUC6x4-15	PUC6x4-20
Outer Dia (mm)	6	6	6	6	6	6	6
Inner Dia (mm)	4	4	4	4	4	4	4
Extended Length (Meters)	2	4	6	8	10	15	20

ITEM NO .	PUC8x5.5-2	PUC8x5.5-4	PUC8x5.5-6	PUC8x5.5-8	PUC8x5.5-10	PUC8x5.5-15	PUC8x5.5-20
Outer Dia (mm)	8	8	8	8	8	8	8
Inner Dia (mm)	5.5	5.5	5.5	5.5	5.5	5.5	5.5
Extended Length (Meters)	2	4	6	8	10	15	20

ITEM NO .	PUC10x6.5-2	PUC10x6.5-4	PUC10x6.5-6	PUC10x6.5-8	PUC10x6.5-10	PUC10x6.5-15	PUC10x6.5-20
Outer Dia (mm)	10	10	10	10	10	10	10
Inner Dia (mm)	6.5	6.5	6.5	6.5	6.5	6.5	6.5
Extended Length (Meters)	2	4	6	8	10	15	20

ITEM NO .	PUC12x8-2	PUC12x8-4	PUC12x8-6	PUC12x8-8	PUC10x6.5-10	PUC12x8-15	PUC12x8-20
Outer Dia (mm)	12	12	12	12	12	12	12
Inner Dia (mm)	8	8	8	8	8	8	8
Extended Length (Meters)	2	4	6	8	10	15	20

Color



Tube\Tube Cutter\Air Blow Guns

Tube\Tube Cutter\Air Blow Guns

Inch Size

ITEM NO .	PUC1/8-1	PUC1/8-2	PUC1/8-5	PUC5/32-2	PUC5/32-5	PUC5/32-10	PUC5/32-15	PUC5/32-20
Outer Dia <small>(inch)</small>	1/8	1/8	1/8	5/32	5/32	5/32	5/32	5/32
Inner Dia <small>(mm)</small>	2	2	2	2.5	2.5	2.5	2.5	2.5
Extended Length <small>(Meters)</small>	1	2	5	2	5	10	15	20

ITEM NO .	PUC1/4-2	PUC1/4-5	PUC1/4-10	PUC1/4-15	PUC5/16-2	PUC5/16-5	PUC5/16-10	PUC5/16-15
Outer Dia <small>(inch)</small>	1/4	1/4	1/4	1/4	5/16	5/16	5/16	5/16
Inner Dia <small>(mm)</small>	4.23	4.23	4.23	4.23	5	5	5	5
Extended Length <small>(Meters)</small>	2	5	10	15	2	5	10	15

ITEM NO .	PUC5/16-20	PUC3/8-2	PUC3/8-5	PUC3/8-10	PUC3/8-15	PUC3/8-20	PUC1/2-2	PUC1/2-5
Outer Dia <small>(inch)</small>	5/16	3/8	3/8	3/8	3/8	3/8	1/2	1/2
Inner Dia <small>(mm)</small>	5	6.35	6.35	6.35	6.35	6.35	8.46	8.46
Extended Length <small>(Meters)</small>	20	2	5	10	15	20	2	5

ITEM NO .	PUC1/2-10	PUC1/2-15	PUC1/2-20
Outer Dia <small>(inch)</small>	1/2	1/2	1/2
Inner Dia <small>(mm)</small>	8.46	8.46	8.46
Extended Length <small>(Meters)</small>	10	15	20

NYLON (Polyamide) TUBE(PA6,PA11,PA12)



Characteristics

- 1.Superior mechanical strength and excellent abrasive resistance, oil resistance, superior cold resistance.
- 2.High precision of inside and outside dia sizes controllable, suitable for various kinds of fittings.
- 3.High resistance to hydrocarbons oils and chemical products.
4. It is normally used on auto, machine tool, chemical and metallurgy etc.

Specification

Material	Nylon (Polyamide)
Fluid	Air, water
Burst Pressure	80 bar
Operation Pressure	20 bar
Operating Temperature	-20°C - +80°C

Metric Size

ITEM NO .	O.D.	I.D.	Standard Length
PA4X2	4mm	2mm	200m
PA4X2.5	4mm	2.5mm	200m
PA6X4	6mm	4mm	100m
PA8X6	8mm	6mm	100m
PA10X7.5	10mm	7.5mm	100m
PA10X8	10mm	8mm	100m
PA12X9	12mm	9mm	100m
PA12X10	12mm	10mm	100m
PA16X12	16mm	12mm	100m

Inch Size

ITEM NO .	O.D.	I.D.	Standard Length
PA1/4	1/4	4.2mm	100m
PA5/16	5/16	6mm	100m
PA3/8	3/8	6.5mm	100m
PA1/2	1/2	9.5mm	100m

Color

BU	C	O	B	G	Y	R
Blue	Transparent	Orange	Black	Green	Yellow	Red



TC-01



TC-02



AG-A