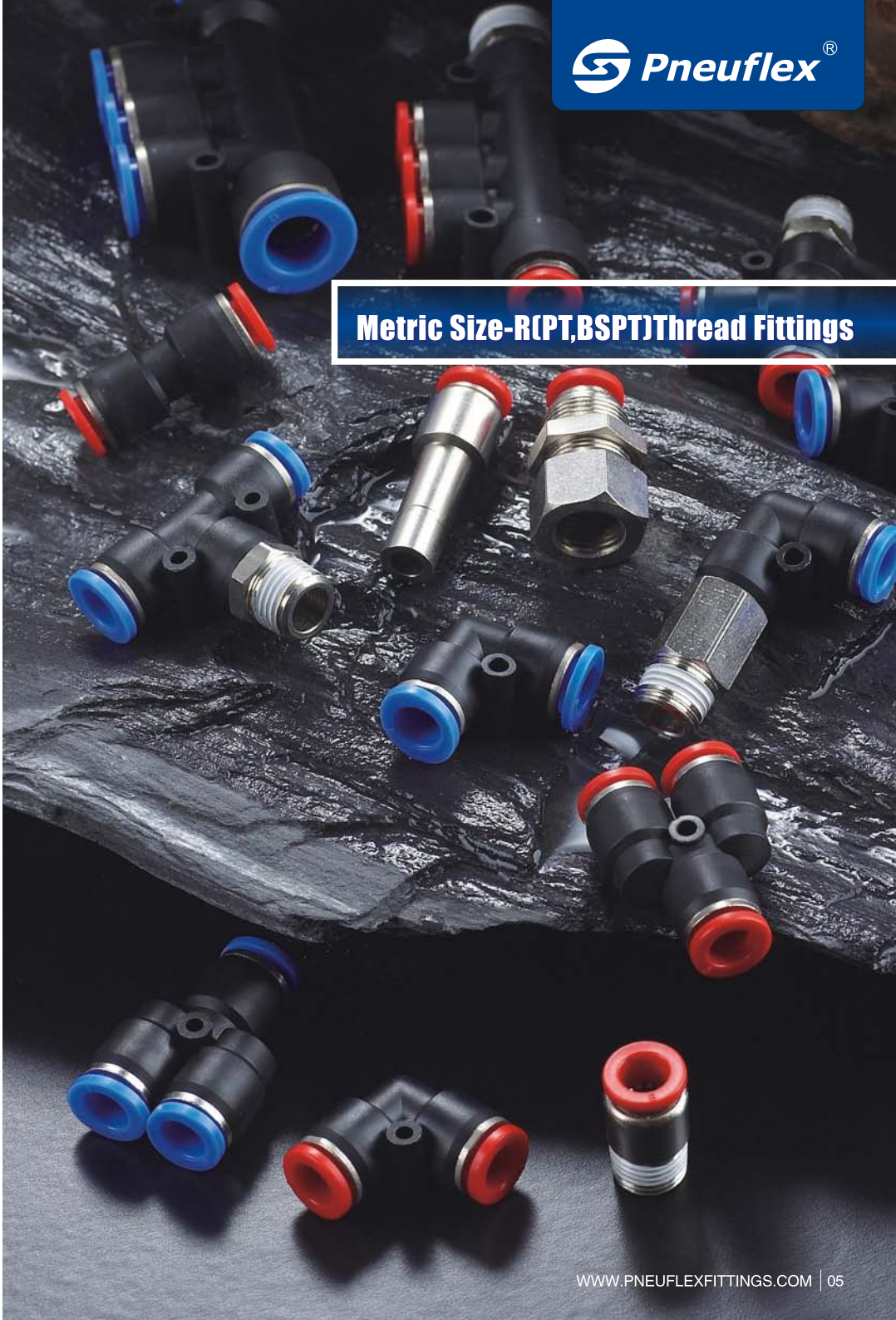


Metric Size-R(PT,BSPT)Thread Fittings



Metric Size-R(PT,BSPT)Thread Fittings

Metric Size-R(PT,BSPT)Thread Fittings

Characteristics

1. Quick installation, simple and flexible, space-saving.
2. The tube fitting comes in a wide variety of models to meet all your needs in pneumatic piping.
3. Even after installation, the direction of tubing can be changed freely.
4. The release ring adopts the ellipse design to make it more convenient and Labor-saving for disconnection.
5. All taper threads are pre-coated with teflon with fine seal performance.
6. PC type fittings are equipped with the internal hexagonal holes. It is easy for them to be mounted in the narrow places.

Specification

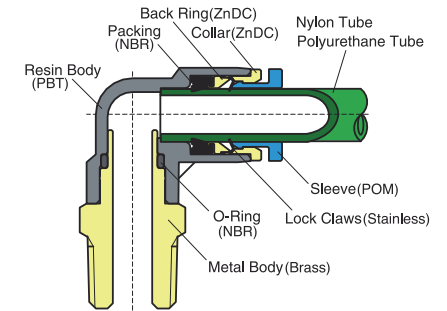
Fluid	Air, Vacuum	
Pressure Range	0~1.0MPa	0~150PSI
Negative Pressure	-100KPa(-750Torr)	-29.5In Hg
Max Pressure	1.5MPa	250PSI
Temperature Range	0~60°C	32~140°F
Applicable Tube	PU (Polyurethane)	PA(Nylon)

Product Code System

Structure Chart

PC 08 - 01

① ② ③



① Type

② Tube Outer Diameter

Metric Size						
Code	04	06	08	10	12	16
Tube Outer Diameter mm	Φ4	Φ6	Φ8	Φ10	Φ12	Φ16

③ Thread Type and Size

55° R(PT,BSPT)-Taper Pipe Thread					
Code	01	02	03	04	06
Thread	R1/8	R1/4	R3/8	R1/2	R3/4

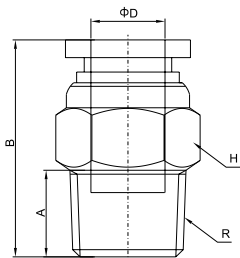
Metric Size				
Code	M5	M6	M8	M10
Thread	M5x0.8	M6x1	M8x1	M10x1
M12	M12A	M14	M16	M20
M12x1.25	M12Ax1.5	M14x1.5	M16x1.5	M20x1.5

Metric Size-R(PT,BSPT)Thread Fittings

Metric Size-R(PT,BSPT)Thread Fittings

PC

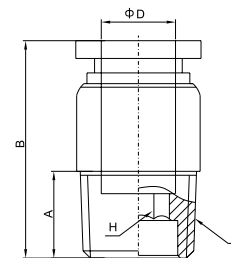
Male Straight



Model	ΦD	R	A	B	H
PC 04-M5	4	M5	4	19	10
PC 04-M6		M6	4.1	19	10
PC 04-01		R1/8	7	19	10
PC 04-02		R1/4	9.5	19	14
PC 06-M5	6	M5	4	20.5	12
PC 06-M6		M6	4.1	20.5	12
PC 06-01		R1/8	7	20	12
PC 06-02		R1/4	9.5	21	14
PC 06-03	R3/8	10	21	17	
PC 06-04	R1/2	13	24	21	
PC 08-01	8	R1/8	7	24.5	14
PC 08-02		R1/4	9.5	24.5	14
PC 08-03		R3/8	10	22	17
PC 08-04		R1/2	13	25	21
PC 10-01	10	R1/8	7	29	17
PC 10-02		R1/4	9.5	31	17
PC 10-03		R3/8	10	28.5	17
PC 10-04		R1/2	13	26	21
PC 12-01	12	R1/8	7	30.5	20
PC 12-02		R1/4	9.5	32.5	20
PC 12-03		R3/8	10	29	20
PC 12-04		R1/2	13	27.5	21
PC 16-02	16	R1/4	9.5	33.5	24
PC 16-03		R3/8	10	34	24
PC 16-04		R1/2	13	35	24

POC

Hex. Holed Straight



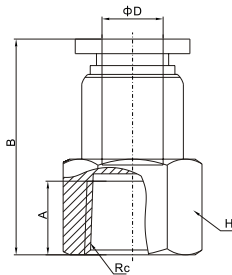
Model	ΦD	R	A	B	H
POC04-M5	4	M5	4	19	2
POC04-M6		M6	4.1	19	2
POC04-01		R1/8	7	19	3
POC04-02		R1/4	9.5	19	3
POC06-M5	6	M5	4	20.5	2
POC06-M6		M6	4.1	20.5	2
POC06-01		R1/8	7	20	4
POC06-02		R1/4	9.5	21	4
POC06-03	R3/8	10	21	4	
POC06-04	R1/2	13	24	4	
POC08-01	8	R1/8	7	24.5	5
POC08-02		R1/4	9.5	24.5	5
POC08-03		R3/8	10	22	6
POC08-04		R1/2	13	25	6
POC10-01	10	R1/8	7	29	5
POC10-02		R1/4	9.5	31	6
POC10-03		R3/8	10	28.5	8
POC10-04		R1/2	13	26	8
POC12-01	12	R1/8	7	30.5	5
POC12-02		R1/4	9.5	32.5	6
POC12-03		R3/8	10	29	8
POC12-04		R1/2	13	27.5	8
POC16-02	16	R1/4	9.5	33.5	6
POC16-03		R3/8	10	34	8
POC16-04		R1/2	13	35	10

Metric Size-R(PT,BSPT)Thread Fittings

Metric Size-R(PT,BSPT)Thread Fittings

PCF

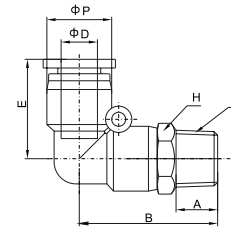
Female Straight



Model	ΦD	Rc	A	B	H
PCF04-M5	4	M5	7.0	22	12
PCF04-M6		M6	7.1	22	12
PCF04-01		RC1/8	8	23	12
PCF04-02		RC1/4	11	26	17
PCF06-M5	6	M5	7.0	23.5	12
PCF06-M6		M6	7.1	23.5	12
PCF06-01		RC1/8	8	24.5	12
PCF06-02		RC1/4	11	27.5	17
PCF06-03		RC3/8	12	28.5	21
PCF06-04		RC1/2	14	30.5	24
PCF08-01	8	RC1/8	8	26.5	14
PCF08-02		RC1/4	11	29.5	17
PCF08-03		RC3/8	12	30.5	21
PCF08-04		RC1/2	14	32.5	24
PCF10-01	10	RC1/8	8	30.5	17
PCF10-02		RC1/4	11	33.5	17
PCF10-03		RC3/8	12	34.5	21
PCF10-04		RC1/2	14	36.5	24
PCF12-02	12	RC1/4	11	34	21
PCF12-03		RC3/8	12	35	21
PCF12-04		RC1/2	14	37	24

PL

Male Elbow



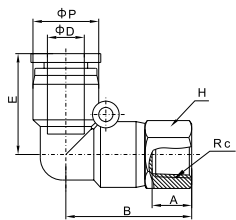
Model	ΦD	E	B	ΦP	A	R	H
PL04-M5	4	18	22.2	11	4	M5	10
PL04-M6		18	22.2	11	4.1	M6	10
PL04-01		18	24.8	11	7	R1/8	10
PL04-02		18	28.8	11	9.5	R1/4	14
PL06-M5	6	19	22.5	13.4	4	M5	12
PL06-M6		19	22.5	13.4	4.1	M6	12
PL06-01		19	25.2	13.4	7	R1/8	12
PL06-02		19	28.2	13.4	9.5	R1/4	14
PL06-03		19	29.2	13.4	10	R3/8	17
PL06-04		19	33.7	13.4	13	R1/2	21
PL08-01	8	23	28.5	15	7	R1/8	14
PL08-02		23	32	15	9.5	R1/4	14
PL08-03		23	33	15	10	R3/8	17
PL08-04		23	36	15	13	R1/2	21
PL10-01	10	27.5	33.3	18.8	7	R1/8	17
PL10-02		27.5	36.3	18.8	9.5	R1/4	17
PL10-03		27.5	36.8	18.8	10	R3/8	17
PL10-04		27.5	40.5	18.8	13	R1/2	21
PL12-01	12	29.5	36.5	21	7	R1/8	19
PL12-02		29.5	38.5	21	9.5	R1/4	19
PL12-03		29.5	39	21	10	R3/8	19
PL12-04		29.5	44	21	13	R1/2	21
PL16-02	16	31.5	41	26	9.5	R1/4	24
PL16-03		31.5	42	26	10	R3/8	24
PL16-04		31.5	45	26	13	R1/2	24

Metric Size-R(PT,BSPT)Thread Fittings

Metric Size-R(PT,BSPT)Thread Fittings

PLF

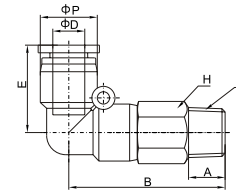
Female Elbow



Model	ΦD	E	B	ΦP	A	R	H	
PLF04-M5	4	18	21.2	11	4	M5	10	
PLF04-M6		18	21.2	11	4.1	M6	10	
PLF04-01		18	23.5	11	7	RC1/8	14	
PLF04-02		18	26.5	11	9.5	RC1/4	17	
PLF06-M5	6	19	21.8	13.4	4	M5	12	
PLF06-M6		19	21.8	13.4	4.1	M6	12	
PLF06-01		19	24.2	13.4	7	RC1/8	12	
PLF06-02		19	27.2	13.4	9.5	RC1/4	17	
PLF06-03	6	19	28.8	13.4	10	RC3/8	21	
PLF06-04		19	30.8	13.4	13	RC1/2	24	
PLF08-01		8	23	27.5	15	7	RC1/8	14
PLF08-02			23	31	15	9.5	RC1/4	17
PLF08-03	23		32	15	10	RC3/8	21	
PLF08-04	23		34	15	13	RC1/2	24	
PLF10-01	10	27.5	31.8	18.8	7	RC1/8	17	
PLF10-02		27.5	35	18.8	9.5	RC1/4	17	
PLF10-03		27.5	36	18.8	10	RC3/8	21	
PLF10-04		27.5	38	18.8	13	RC1/2	24	
PLF12-01	12	29.5	33.5	21	7	RC1/8	21	
PLF12-02		29.5	37	21	9.5	RC1/4	21	
PLF12-03		29.5	38	21	10	RC3/8	21	
PLF12-04		29.5	40	21	13	RC1/2	24	

PLL

Extended Male Elbow



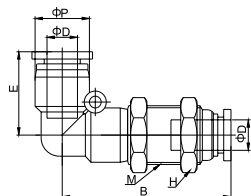
Model	ΦD	E	B	ΦP	A	R	H	
PLL04-M5	4	18	32	11	4	M5	10	
PLL04-M6		18	32	11	4.1	M6	10	
PLL04-01		18	34	11	7	R1/8	10	
PLL04-02		18	37	11	9.5	R1/4	14	
PLL06-M5	6	19	34.5	13.4	4	M5	12	
PLL06-M6		19	34.5	13.4	4.1	M6	12	
PLL06-01		19	37.5	13.4	7	R1/8	12	
PLL06-02		19	40	13.4	9.5	R1/4	14	
PLL06-03	6	19	41.5	13.4	10	R3/8	17	
PLL06-04		19	45	13.4	13	R1/2	21	
PLL08-01		8	23	42.5	15	7	R1/8	14
PLL08-02			23	44.5	15	9.5	R1/4	14
PLL08-03	23		46.5	15	10	R3/8	17	
PLL08-04	23		50	15	13	R1/2	21	
PLL10-01	10	27.5	52	18.8	7	R1/8	17	
PLL10-02		27.5	54	18.8	9.5	R1/4	17	
PLL10-03		27.5	55	18.8	10	R3/8	17	
PLL10-04		27.5	58.5	18.8	13	R1/2	21	
PLL12-01	12	29.5	59	21	7	R1/8	19	
PLL12-02		29.5	59.5	21	9.5	R1/4	19	
PLL12-03		29.5	60.5	21	10	R3/8	19	
PLL12-04		29.5	64	21	13	R1/2	21	
PLL16-02	16	31.5	72	26	9.5	R1/4	24	
PLL16-03		31.5	74	26	10	R3/8	24	
PLL16-04		31.5	78	26	13	R1/2	24	

Metric Size-R(PT,BSPT)Thread Fittings

Metric Size-R(PT,BSPT)Thread Fittings

PLM

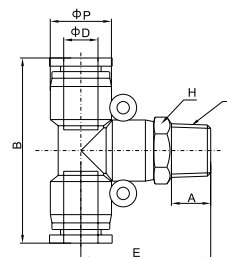
Bulkhead Elbow



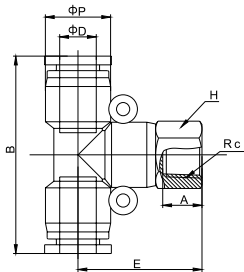
Model	ΦD	E	B	ΦP	A	M	H
PLM04	4	18	43.6	11	7	M12	14
PLM06	6	19	46.5	13.4	9.5	M14	17
PLM08	8	23	53.5	15	4	M16	20
PLM10	10	27.5	63.8	18.8	7	M20	24
PLM12	12	29.5	69.2	21	9.5	M22	27
PLM16	16	31.5	76	26	10	M24	30

PB

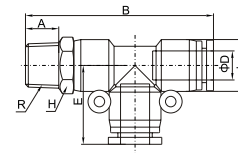
Male Branch Tee



Model	ΦD	E	B	ΦP	A	R	H
PB04-M5	4	22	36.5	11	4	M5	10
PB04-M6		22	36.5	11	4.1	M6	10
PB04-01		24.5	36.5	11	7	R1/8	10
PB04-02		27.5	36.5	11	9.5	R1/4	14
PB06-M5	6	23	38.5	13.4	4	M5	12
PB06-M6		23	38.5	13.4	4.1	M6	12
PB06-01		25.5	38.5	13.4	7	R1/8	12
PB06-02		28.5	38.5	13.4	9.5	R1/4	14
PB06-03		29.5	38.5	13.4	10	R3/8	17
PB06-04		34	38.5	13.4	13	R1/2	21
PB08-01	8	28.5	45.5	15	7	R1/8	14
PB08-02		32	45.5	15	9.5	R1/4	14
PB08-03		33	45.5	15	10	R3/8	17
PB08-04		36	45.5	15	13	R1/2	21
PB10-01	10	34	56	18.8	7	R1/8	17
PB10-02		37	56	18.8	9.5	R1/4	17
PB10-03		37.5	56	18.8	10	R3/8	17
PB10-04		41.5	56	18.8	13	R1/2	21
PB12-01	12	36.5	59	21	7	R1/8	21
PB12-02		38.5	59	21	9.5	R1/4	21
PB12-03		39	59	21	10	R3/8	21
PB12-04		42	59	21	13	R1/2	21
PB16-02	16	40.5	63	26	9.5	R1/4	24
PB16-03		41	63	26	10	R3/8	24
PB16-04		44	63	26	13	R1/2	24

Metric Size-R(PT,BSPT)Thread Fittings
Metric Size-R(PT,BSPT)Thread Fittings
PBF
Female Branch Tee


Model	ΦD	E	B	ΦP	A	R	H	
PBF04-M5	4	21.2	36.5	11	4.5	M5	10	
PBF04-M6		21.2	36.5	11	4.6	M6	10	
PBF04-01		23.5	36.5	11	7	R1/8	10	
PBF04-02		26.5	36.5	11	10	R1/4	14	
PBF06-M5	6	21.8	38.5	13.4	4.5	M5	12	
PBF06-M6		21.8	38.5	13.4	4.6	M6	12	
PBF06-01		24.2	38.5	13.4	7	R1/8	12	
PBF06-02		27.2	38.5	13.4	10	R1/4	14	
PBF06-03	6	28.8	38.5	13.4	11	R3/8	17	
PBF06-04		30.8	38.5	13.4	13	R1/2	21	
PBF08-01		8	27.5	45.5	15	7	R1/8	14
PBF08-02			31	45.5	15	10	R1/4	14
PBF08-03	32		45.5	15	11	R3/8	17	
PBF08-04	34		45.5	15	13	R1/2	21	
PBF10-01	10	31.8	56	18.8	7	R1/8	17	
PBF10-02		35	56	18.8	10	R1/4	17	
PBF10-03		36	56	18.8	11	R3/8	17	
PBF10-04		38	56	18.8	13	R1/2	21	
PBF12-01	12	33.5	59	21	7	R1/8	21	
PBF12-02		37	59	21	10	R1/4	21	
PBF12-03		38	59	21	11	R3/8	21	
PBF12-04		40	59	21	13	R1/2	21	
PBF16-02	16	40.5	63	26	10	R1/4	24	
PBF16-03		41	63	26	11	R3/8	24	
PBF16-04		44	63	26	13	R1/2	24	

PD
Male Run Tee


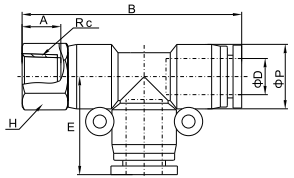
Model	ΦD	E	B	ΦP	A	R	H	
PD04-M5	4	18	40.5	11	4	M5	10	
PD04-M6		18	40.5	11	4.1	M6	10	
PD04-01		18	43	11	7	R1/8	10	
PD04-02		18	46	11	9.5	R1/4	14	
PD06-M5	6	19	42	13.4	4	M5	12	
PD06-M6		19	42	13.4	4.1	M6	12	
PD06-01		19	45	13.4	7	R1/8	12	
PD06-02		19	47.5	13.4	9.5	R1/4	14	
PD06-03	6	19	48.5	13.4	10	R3/8	17	
PD06-04		19	53	13.4	13	R1/2	21	
PD08-01		8	23	51.5	15	7	R1/8	14
PD08-02			23	55	15	9.5	R1/4	14
PD08-03	23		56	15	10	R3/8	17	
PD08-04	23		59	15	13	R1/2	21	
PD10-01	10	28	62	18.8	7	R1/8	17	
PD10-02		28	65	18.8	9.5	R1/4	17	
PD10-03		28	66.5	18.8	10	R3/8	17	
PD10-04		28	69.5	18.8	13	R1/2	21	
PD12-01	12	29.5	66	21	7	R1/8	21	
PD12-02		29.5	68	21	9.5	R1/4	21	
PD12-03		29.5	68.5	21	10	R3/8	21	
PD12-04		29.5	71.5	21	13	R1/2	21	
PD16-02	16	31	72.5	26	9.5	R1/4	24	
PD16-03		31	73	26	10	R3/8	24	
PD16-04		31	76	26	13	R1/2	24	

Metric Size-R(PT,BSPT)Thread Fittings

Metric Size-R(PT,BSPT)Thread Fittings

PDF

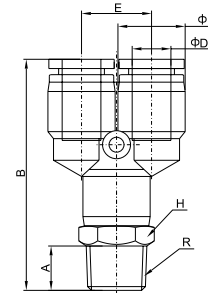
Female Run Tee



Model	ΦD	E	B	ΦP	A	R	H
PDF04-M5	4	18	40.5	11	4	M5	10
PDF04-01		18	43	11	7	R1/8	10
PDF04-02		18	46	11	9.5	R1/4	14
PDF06-M5	6	19	42	13.4	4	M5	12
PDF06-01		19	45	13.4	7	R1/8	12
PDF06-02		19	47.5	13.4	9.5	R1/4	14
PDF06-03		19	48.5	13.4	10	R3/8	17
PDF06-04	19	53	13.4	13	R1/2	21	
PDF08-01	8	23	51.5	15	7	R1/8	14
PDF08-02		23	55	15	9.5	R1/4	14
PDF08-03		23	56	15	10	R3/8	17
PDF08-04		23	59	15	13	R1/2	21
PDF10-01	10	28	62	18.8	7	R1/8	17
PDF10-02		28	65	18.8	9.5	R1/4	17
PDF10-03		28	66.5	18.8	10	R3/8	17
PDF10-04		28	69.5	18.8	13	R1/2	21
PDF12-01	12	29.5	66	21	7	R1/8	21
PDF12-02		29.5	68	21	9.5	R1/4	21
PDF12-03		29.5	68.5	21	10	R3/8	21
PDF12-04		29.5	71.5	21	13	R1/2	21
PDF16-02	16	31	72.5	26	9.5	R1/4	24
PDF16-03		31	73	26	10	R3/8	24
PDF16-04		31	76	26	13	R1/2	24

PX

Male Y

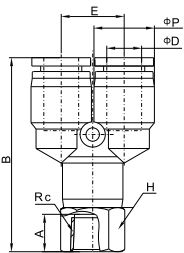


Model	ΦD	E	B	ΦP	A	R	H
PX04-M5	4	11	39.5	11	4	M5	10
PX04-M6		11	39.5	11	4.1	M6	10
PX04-01		11	42	11	7	R1/8	10
PX04-02	1	45	1	9.5	R1/4	14	
PX06-M5	6	13.4	40.5	13.4	4	M5	12
PX06-M6		13.4	40.5	13.4	4.1	M6	12
PX06-01		13.4	43.5	13.4	7	R1/8	12
PX06-02		13.4	46.5	13.4	9.5	R1/4	14
PX06-03	13.4	47.5	13.4	10	R3/8	17	
PX06-04	13.4	51.5	13.4	13	R1/2	21	
PX08-01	8	15	46	15	7	R1/8	14
PX08-02		15	49.5	15	9.5	R1/4	14
PX08-03		15	51	15	10	R3/8	17
PX08-04		15	54	15	13	R1/2	21
PX10-01	10	18.8	60	18.8	7	R1/8	17
PX10-02		18.8	63	18.8	9.5	R1/4	17
PX10-03		18.8	64	18.8	10	R3/8	17
PX10-04		18.8	66.5	18.8	13	R1/2	21
PX12-01	12	21	65	21	7	R1/8	19
PX12-02		21	70	21	9.5	R1/4	19
PX12-03		21	70.5	21	10	R3/8	19
PX12-04		21	73	21	13	R1/2	21

Metric Size-R(PT,BSPT)Thread Fittings

Metric Size-R(PT,BSPT)Thread Fittings

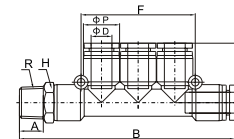
PXF



Female Y

Model	ϕD	E	B	ϕP	A	R	H	
PXF04-M5	4	11	39.5	11	4	M5	10	
PXF04-M6		11	39.5	11	4.1	M6	10	
PXF04-01		11	42	11	7	R1/8	10	
PXF04-02		11	45	11	9.5	R1/4	14	
PXF06-M5	6	13.4	40.5	13.4	4	M5	12	
PXF06-M6		13.4	40.5	13.4	4.1	M6	12	
PXF06-01		13.4	43.5	13.4	7	R1/8	12	
PXF06-02		13.4	46.5	13.4	9.5	R1/4	14	
PXF06-03		13.4	47.5	13.4	10	R3/8	17	
PXF06-04		13.4	51.5	13.4	13	R1/2	21	
PXF08-01		8	15	46	15	7	R1/8	14
PXF08-02			15	49.5	15	9.5	R1/4	14
PXF08-03	15		51	15	10	R3/8	17	
PXF08-04	15		54	15	13	R1/2	21	
PXF10-01	10	18.8	60	18.8	7	R1/8	17	
PXF10-02		18.8	63	18.8	9.5	R1/4	17	
PXF10-03		18.8	64	18.8	10	R3/8	17	
PXF10-04		18.8	66.5	18.8	13	R1/2	21	
PXF12-01	12	21	65	21	7	R1/8	19	
PXF12-02		21	70	21	9.5	R1/4	19	
PXF12-03		21	70.5	21	10	R3/8	19	
PXF12-04		21	73	21	13	R1/2	21	

PKB



Male Branch Triple

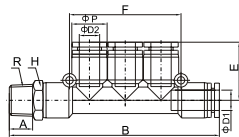
Model	ϕD	B	E	A	R	F	ϕP	H
PKB04-01	4	63.1	19	7	R1/8	35.8	13.4	12
PKB04-02		66.5	19	9.5	R1/4	35.8	13.4	14
PKB06-01	6	70.5	20.2	7	R1/8	42.8	15	14
PKB06-02		74	20.2	9.5	R1/4	42.8	15	14
PKB06-03		75	20.2	10	R3/8	42.8	15	17
PKB08-01	8	86.5	23.8	7	R1/8	49.6	18.8	14
PKB08-02		89.5	23.8	9.5	R1/4	49.6	18.8	14
PKB08-03		90.5	23.8	10	R3/8	49.6	18.8	17
PKB10-02	10	104	29	9.5	R1/4	59.6	21	17
PKB10-03		105.5	29	10	R3/8	59.6	21	17
PKB10-04		110	29	13	R1/2	59.6	21	21

Metric Size-R(PT,BSPT)Thread Fittings

Metric Size-R(PT,BSPT)Thread Fittings

PKD

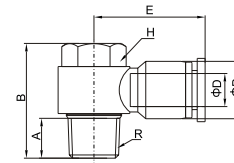
Male Reduced Branch Triple



Model	ΦD1	ΦD2	B	E	A	R	F	ΦP	H
PKD06-04-01	6	4	63.1	19	7	R1/8	35.8	13.4	12
PKD06-04-02			66.5	19	9.5	R1/4	35.8	13.4	14
PKD08-06-01	8	6	70.5	20.2	7	R1/8	42.8	15	14
PKD08-06-02			74	20.2	9.5	R1/4	42.8	15	14
PKD08-06-03			75	20.2	10	R3/8	42.8	15	17
PKD10-08-01	10	8	86.5	23.8	7	R1/8	49.6	18.8	14
PKD10-08-02			89.5	23.8	9.5	R1/4	49.6	18.8	14
PKD10-08-03			90.5	23.8	10	R3/8	49.6	18.8	17
PKD12-10-02	12	10	104	29	9.5	R1/4	59.6	21	17
PKD12-10-03			105.5	29	10	R3/8	59.6	21	17
PKD12-10-04			110	29	13	R1/2	59.6	21	21

PH

Male Banjo



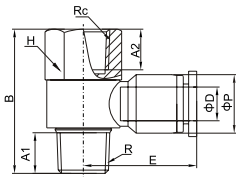
Model	ΦD	E	B	ΦP	A	R	H
PH04-M5	4	20	17	11	4	M5	8
PH04-M6		20	17	11	4.1	M6	8
PH04-01		22.5	26	11	7	R1/8	12
PH04-02		24	23.5	11	9.5	R1/4	14
PH06-M5	6	22	17	13.4	4	M5	8
PH06-M6		22	17	13.4	4.1	M6	8
PH06-01		23	23.5	13.4	7	R1/8	12
PH06-02		25	26	13.4	9.5	R1/4	14
PH06-03	27	31.5	13.4	10	R3/8	19	
PH08-01	8	25.5	23.5	15	7	R1/8	12
PH08-02		28.5	26	15	9.5	R1/4	14
PH08-03		29.5	31.5	15	10	R3/8	19
PH08-04		32.5	38.5	15	13	R1/2	24
PH10-01	10	30	23.5	18.8	7	R1/8	12
PH10-02		32	26	18.8	9.5	R1/4	14
PH10-03		33	31.5	18.8	10	R3/8	19
PH10-04		36	38.5	18.8	13	R1/2	24
PH12-02	12	34	26	21	9.5	R1/4	14
PH12-03		35.5	31.5	21	10	R3/8	19
PH12-04		36.5	38.5	21	13	R1/2	24

Metric Size-R(PT,BSPT)Thread Fittings

Metric Size-R(PT,BSPT)Thread Fittings

PHF

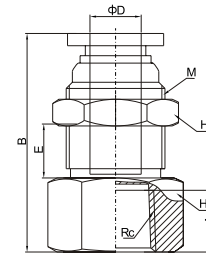
Female Banjo



Model	ΦD	E	B	ΦP	A1	A2	Rc	R	H
PHF04-M5	4	20	19.5	11	4	5	M5	M5	8
PHF04-M6		20	19.5	11	4.1	5	M6	M6	8
PHF04-01		22.5	29.5	11	7	8	RC1/8	R1/8	12
PHF04-02		24	34.5	11	9.5	10	RC1/4	R1/4	17
PHF06-M5	6	22	19.5	13.4	4	5	M5	M5	8
PHF06-M6		22	19.5	13.4	4.1	5	M6	M6	8
PHF06-01		23	29.5	13.4	7	8	RC1/8	R1/8	12
PHF06-02		25	34.5	13.4	9.5	10	RC1/4	R1/4	17
PHF06-03	27	40.5	13.4	10	11	RC3/8	R3/8	21	
PHF08-01	8	25.5	29.5	15	7	8	RC1/8	R1/8	12
PHF08-02		28.5	34.5	15	9.5	10	RC1/4	R1/4	17
PHF08-03		29.5	40.5	15	10	11	RC3/8	R3/8	21
PHF08-04		32.5	47.5	15	13	14	RC1/2	R1/2	24
PHF10-01	10	30	34.5	18.8	7	8	RC1/8	R1/8	12
PHF10-02		32	34.5	18.8	9.5	10	RC1/4	R1/4	17
PHF10-03		33	40.5	18.8	10	11	RC3/8	R3/8	21
PHF10-04		36	47.5	18.8	13	14	RC1/2	R1/2	24
PHF12-02	12	34	34.5	21	9.5	10	RC1/4	R1/4	17
PHF12-03		35.5	40.5	21	10	11	RC3/8	R3/8	21
PHF12-04		36.5	47.5	21	13	14	RC1/2	R1/2	24

PMF

Bulkhead Female Straight



Model	ΦD	Rc	A	B	M	E	H1	H2
PMF04-01	4	RC1/8	8	23	M12	5	14	14
PMF04-02		RC1/4	11	26	M12	5	17	14
PMF06-01	6	RC1/8	8	24.5	M12	7	17	17
PMF06-02		RC1/4	11	27.5	M14	7	17	17
PMF06-03	6	RC3/8	12	28.5	M14	7	19	17
PMF08-01	8	RC1/8	8	26.5	M16	8	19	19
PMF08-02		RC1/4	11	29.5	M16	8	19	19
PMF08-03		RC3/8	12	30.5	M16	8	19	19
PMF08-04		RC1/2	14	32.5	M16	8	24	19
PMF10-01	10	RC1/8	8	30.5	M20	8.5	22	24
PMF10-02		RC1/4	11	33.5	M20	8.5	24	24
PMF10-03		RC3/8	12	34.5	M20	8.5	24	24
PMF10-04		RC1/2	14	36.5	M20	8.5	24	24
PMF12-01	12	RC1/8	8	34	M22	9	24	26
PMF12-02		RC1/4	11	34	M22	9	24	26
PMF12-03		RC3/8	12	35	M22	9	24	26
PMF12-04		RC1/2	14	37	M22	9	24	26

Metric Size-R(PT,BSPT)Thread Fittings

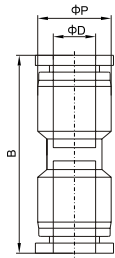
Metric Size-R(PT,BSPT)Thread Fittings

PU

Union Straight



Model	ΦD	B	ΦP
PU04	4	32.5	11
PU06	6	35	13.4
PU08	8	39	15
PU10	10	47	18.8
PU12	12	48.5	21
PU16	16	56	26

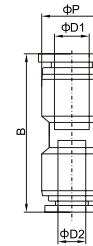


PG

Union Straight Reducer



Model	$\Phi D1$	$\Phi D2$	B	ΦP
PG06-04	6	4	35	13.4
PG08-04	8	4	38.5	15
PG08-06	8	6	38.5	15
PG10-06	10	6	46.5	18.8
PG10-08	10	8	46.5	18.8
PG12-06	12	6	48	21
PG12-08	12	8	48	21
PG12-10	12	10	48	21



Metric Size-R(PT,BSPT)Thread Fittings

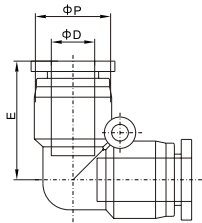
Metric Size-R(PT,BSPT)Thread Fittings

PV

Union Elbow



Model	ΦD	E	ΦP
PV04	4	18	11
PV06	6	19	13.4
PV08	8	23	15
PV10	10	27.5	18.8
PV12	12	29.5	21
PV16	16	31.5	26

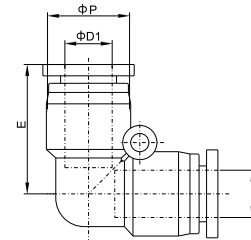


PVG

Union Elbow Reducer



Model	ΦD1	ΦD2	E	ΦP
PVG06-04	6	4	19	13.4
PVG08-04	8	4	23	15
PVG08-06	8	6	23	15
PVG10-06	10	6	27.5	18.8
PVG10-08	10	8	27.5	18.8
PVG12-08	12	8	29.5	21
PVG12-10	12	10	29.5	21



Metric Size-R(PT,BSPT)Thread Fittings

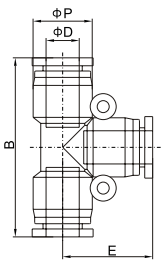
Metric Size-R(PT,BSPT)Thread Fittings

PE

Union Tee



Model	ΦD	B	ΦP	E
PE04	4	36.5	11	18
PE06	6	38.5	13.4	19
PE08	8	45.5	15	23
PE10	10	56	18.8	28
PE12	12	58.5	21	39.5
PE16	16	63	26	31

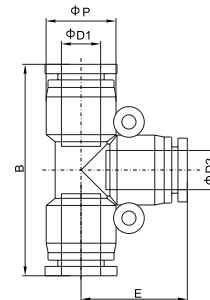


PEG

Union Tee Reducer



Model	ΦD1	ΦD2	B	ΦP	E
PEG06-04	6	4	38.5	13.4	19
PEG08-06	8	6	45.5	15	23
PEG10-08	10	8	56	18.8	28
PEG12-10	12	10	58.5	21	39.5



Metric Size-R(PT,BSPT)Thread Fittings

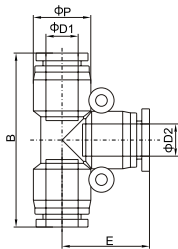
Metric Size-R(PT,BSPT)Thread Fittings

PGE

Union Tee Reducer



Model	ΦD1	ΦD2	B	ΦP	E
PGE06-04	4	6	38	13.4	19
PGE08-06	6	8	45	15	23
PGE10-08	8	10	55.5	18.8	28
PGE12-10	10	12	58	21	39.5

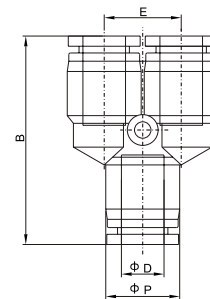


PY

Union Y



Model	ΦD	B	ΦP	E
PY04	4	35.5	11	11
PY06	6	37	13.4	13.4
PY08	8	40.5	15	15
PY10	10	49.5	18.8	18.8
PY12	12	52.5	21	21



Metric Size-R(PT,BSPT)Thread Fittings

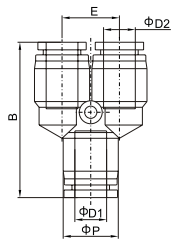
Metric Size-R(PT,BSPT)Thread Fittings

PW

Union Y Reducer



Model	ΦD1	ΦD2	B	ΦP	E
PW06-04	6	4	37	13.4	13.4
PW08-06	8	6	40.5	15	15
PW10-08	10	8	49.5	18.8	18.8
PW12-10	12	10	52.5	21	21

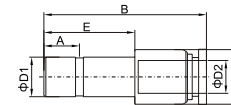


PGJ

Plug-in Reducer



Model	ΦD2	E	ΦD1	B	A	ΦP
PGJ06-04	4	17	6	41	6	10
PGJ08-04	4	20	8	44	6	10
PGJ08-06	6	20	8	45	6	12
PGJ10-06	6	23	10	47	8	12
PGJ10-08	8	23	10	47	8	14
PGJ12-08	8	23	12	54	8	14
PGJ12-10	10	23	12	54	8	17



Metric Size-R(PT,BSPT)Thread Fittings

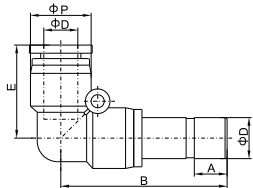
Metric Size-R(PT,BSPT)Thread Fittings

PLJ

Plug-in Elbow



Model	ΦD	E	B	ΦP
PLJ04	4	18	33	11
PLJ06	6	19	36.2	13.4
PLJ08	8	23	42.5	15
PLJ10	10	27.5	50.8	18.8
PLJ12	12	29.6	54.5	21
PLJ16	16	32.5	59.8	24

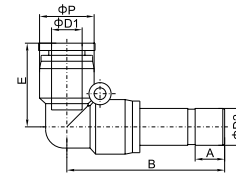


PLGJ

Plug-in Elbow Reducer



Model	ΦD1	E	B	ΦP	A	ΦD2
PLGJ06-04	4	18	32.3	11	6	6
PLGJ08-04	4	18	35.3	11	6	8
PLGJ08-06	6	19	37	13.4	6	8
PLGJ10-06	6	19	40	13.4	6	10
PLGJ10-08	8	23	43	15	8	10
PLGJ12-08	8	23	43	15	8	12
PLGJ12-10	10	27.5	47	18.8	8	12



Metric Size-R(PT,BSPT)Thread Fittings

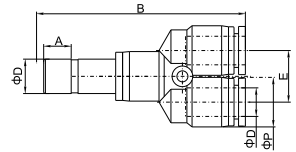
Metric Size-R(PT,BSPT)Thread Fittings

PYJ

Plug-in Y



Model	ΦD	E	B	ΦP
PYJ04	4	11	51	11
PYJ06	6	13.4	54.5	13.4
PYJ08	8	15	60.1	15
PYJ10	10	18.8	72.9	18.8
PYJ12	12	21	78.1	21

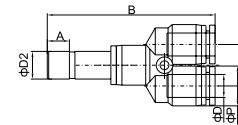


PWJ

Plug-in Y Reducer



Model	ΦD1	E	B	ΦP	A	ΦD2
PWJ06-04	4	11	50	11	6	6
PWJ08-04	4	11	53	11	6	8
PWJ08-06	6	13.4	54.5	13.4	6	8
PWJ10-06	6	13.4	57.5	13.4	6	10
PWJ10-08	8	15	61	15	8	10
PWJ12-08	8	15	61	15	8	12
PWJ12-10	10	18.8	69.5	18.8	8	12



Metric Size-R(PT,BSPT)Thread Fittings

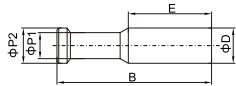
Metric Size-R(PT,BSPT)Thread Fittings

PP



Plug

Model	ΦD	E	ΦD2	B	ΦP
PP04	4	15	5	28	3
PP06	6	17	7	33	3
PP08	8	18	9	37	4
PP10	10	21	11	42	5
PP12	12	23	13	44	6

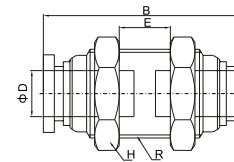


PM



Bulkhead Union

Model	ΦD	B	E	R	H
PM04	4	30	8	M12X1	14
PM06	6	33	10	M14X1	17
PM08	8	36.8	12	M16X1	19
PM10	10	44.5	15	M20X1	24
PM12	12	46	16	M22X1	27



Metric Size-R(PT,BSPT)Thread Fittings

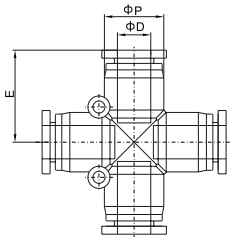
Metric Size-R(PT,BSPT)Thread Fittings

PZA

Union Cross



Model	ΦD	E	ΦP
PZA04	4	17.5	11
PZA06	6	19.2	13.4
PZA08	8	22.5	15
PZA10	10	28	18.8
PZA12	12	30	21

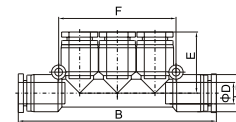


PK

Union Branch



Model	ΦD	B	E	F	ΦP
PK04	4	57	19	35.8	13.4
PK06	6	64	20.2	42.8	15
PK08	8	80.6	23.8	49.6	18.8
PK10	10	96	29	59.6	21



PKG

Union Branch Reducer



Model	ΦD1	B	E	ΦD2	F	ΦP
PKG06-04	6	57.5	19	4	35.8	13.4
PKG08-06	8	65	20.2	6	42.8	15
PKG10-08	10	81	23.8	8	49.6	18.8
PKG12-10	12	97	29	10	59.6	21

